



## Background Information

Peculiar Child Care Support is a registered Charity Organization operating in Uganda Africa to serve and transform lives of children living in poorest slum areas and remote villages of Uganda with a targeted focus upon providing access to education, healthcare, skills development, charity mission trips and leadership formation projects, which mainstreams child rights, gender equality and Gods love. All projects are community based and they are geared towards sustainability.

## Build a School | Educate a Child

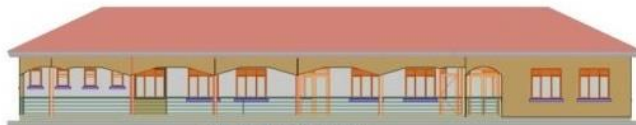
A donation of **\$5000** would construct a classroom and benefit more than one child, over 20 children shall benefit from your Giving". While a onetime planned donation of **\$35000** would also construct a fully furnished school of seven classrooms to educate and transform lives of more than 150 children in the remote village of Kikoza, Luwero Uganda Africa



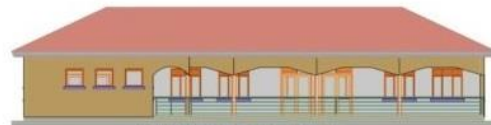
REAR ELEVATION  
(Nursery Block)



RIGHT END ELEVATION  
(Nursery Block)



FRONT ELEVATION  
(Nursery Block)



LEFT END ELEVATION  
(Nursery Block)

## Problem

Children love school and that's where they first make friends. Over half of the populations of each community in Uganda are children with no or little formal education, we are working to change that. Since its establishment, one of the organization's primary focus has been supporting orphans and vulnerable children with quality education and food.

However, the increasing running costs and rent for school sites in Uganda are threatening the organizations education program for children.

Lack of enough space and classrooms (buildings) to accommodate a full primary school, the organization has started a campaign aimed at attracting possible partners, sponsors and donors to this cause. We intend to construct a better school with more classrooms, to offer more free education to vulnerable children in a safe space for learning.



**Peculiar Child Care Support**  
"Touching Hearts. Changing Lives"



## Solution

In 2021 the organization secured some piece of land equivalent to one (1) hectare located in Kikoza Village, Luwero district. We are planning to build a better school in this bigger space, with enough classrooms, kit them out with new equipment and be accessible to as many children as possible. With more space, we will be able to increase the number of students (children) from some of the poorest families in the community helping more children than ever attend school. All students will be able to graduate with a formal certificate of primary education ready for entry to our secondary/high schools.

## Specific Need

The organization is requesting for a GIFT of **\$35000** from well-wishers and Potential Financial Partnerships, championing this campaign to raise support to construct a school of seven (7) well-furnished classroom blocks in a remote village of Kikoza, Luwero Uganda.

**NB:** A classroom costs **\$5000**. When you choose to construct a classroom, you will benefit more than one child and over 20 children shall benefit from your Giving".



**Peculiar Child Care Support**  
"Touching Hearts. Changing Lives"

## Direct Beneficiaries

The school will provide a nurturing and calm learning environment with enough and well-furnished classrooms, to meet the physical, social, educational and spiritual needs of children from poor families as part of our holistic approach to childcare and empowerment.

## Financial Accountability

At **PECULIAR CHILD CARE SUPPORT** we recognize that all that we have belongs to God and we are only stewards of the resources God gives to us. As such, we endeavor to maintain the highest standard of financial accountability, applying the best accounting principles to the funds donated to our work.

We apply 100% of all donations, without exception, to the specific project or program for which it was intended by the donor and no other. When you make a donation targeted to a specific project you can be rest assured the organization will apply 100% of the designated funds to the project for which you intended and no other.

**If you feel God leading you to partner with our school projects, please reach out to us. We are flexible and can fit in your time and schedule or visit our website for more information [www.peculiarchild.org](http://www.peculiarchild.org)**

### **SAMUEL KUTEESA**

Director – Operations / Partnerships  
Uganda Africa

+256 703 155536 +256 773 999239

[samkutie@gmail.com](mailto:samkutie@gmail.com)

[www.peculiarchild.org](http://www.peculiarchild.org)

