

TRAINING COURSE

TO BE ORGANIZED BY

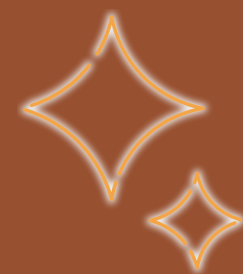


LESZNO

NON-FORMAL EDUCATION IN FORMAL EDUCATION CONTEXT



KA105:
Mobility of Youth Workers



WHO

WSH: WYŻSZA SZKOŁA HUMANISTYCZNA



WHERE

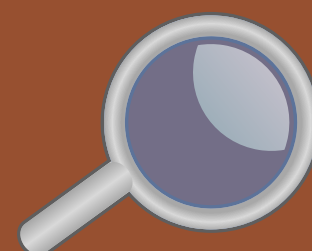
LESZNO, POLAND



WHEN

19-24.09.2020

WHAT



Training Course for teachers and actors on formal education, to deliver them knowledge and tools within Nonformal education which can be applied at educational level, in formal insitutions.





PROJECT OBJECTIVES

- To deliver Nonformal education methods to actors in formal education system (teachers, educators, pedagogues, etc);
- To understand better the concepts of Nonformal, formal and informal education;
- To discuss methods and strategies to combine nonformal, informal and formal education into the education system;

- To discuss challenges faced by teachers at national level;
- To fight early drop outs among young people through innovative teaching and learning;
- To develop partnerships and support at european level to overcome challenges faced in schools;
- To work on formal education needs and discuss possible alternatives and improvement;
- To get to know Erasmus+ and its opportunities.

TARGET GROUP

Participants should be **18+ youth leaders, teachers, pedagogues or educators** - actors of the formal education system.

Ideally, participants with experience in working at local level in regions of early drop outs; or working with students/ youngsters facing lack of learning motivation.

They should have experience relevant to contribute to the TC.

They should be interested in the topic and willing to spread and implement their knowledge from the TC afterwards in their work/ schools, or NGOs.

They also need to be open to develop partnerships and create future networks and support, as well as engaged during all phases of the project: preparation, implementation, visibility and follow up.

The participants should have a **GOOD English** level to communicate and express themselves and they should be committed during all the working process.



HOW MANY PEOPLE

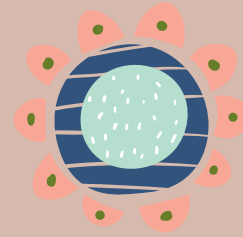
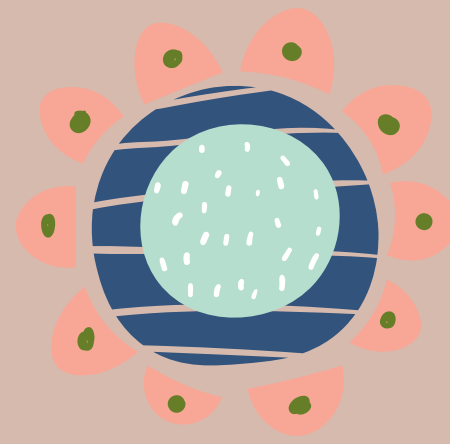
We will have a group of between **28 and 30 people**, a number which we believe is good to develop a safe learning environment, as we can work closer to each other and we have space and time to share our ideas and try them.



Participants per partner:

To be agreed with the partners (between 2-4 people)

METHOD OF WORK:

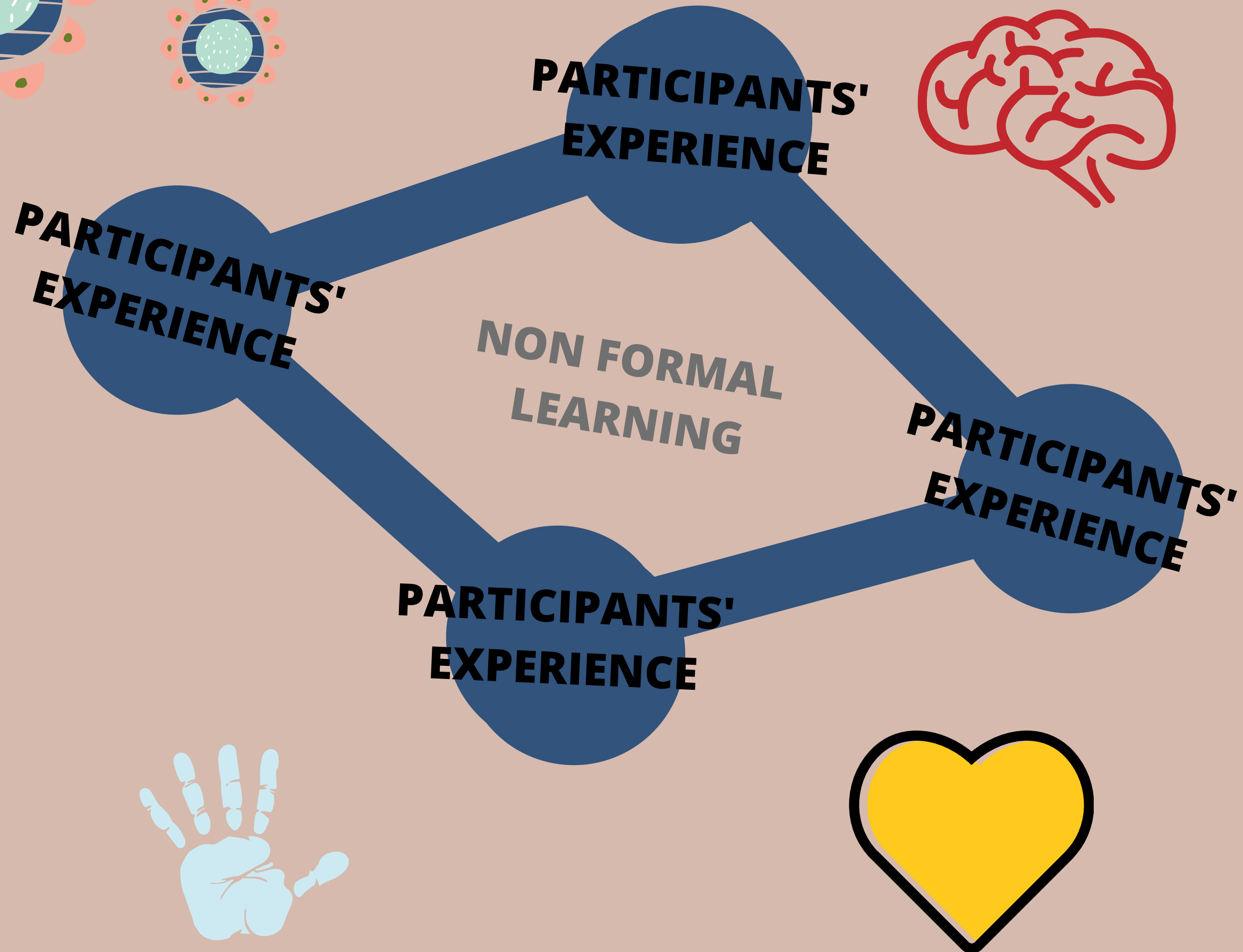


A mix of sessions between Training Course and Seminar - Finding the best balance of work.

We will work based on **NFE methods**, **learning by doing**, **world cafe**, **discussions** and **reflections** on the topic. Plus, we will also work based on **exchange of knowledge** and **experience** from the participants and partners, in a horizontal delivering way (so everyone will be delivering knowledge to everyone).

There will be one trainer, who will facilitate the learning process and will lead some of the workshops. However, most of the knowledge and inputs are expected to come from the participants' team; so **engagement** is crucial in the project.

Indeed, the basis of the activity will be based on the NFE sets and methodology.



PARTNERSHIP CONDITIONS

As a partner we commit ourselves, as representing our organisations or educational institutions, to full participate in all stages of the project:

PREPARATION

We identify suitable participants (either from our schools or from organisations/ local partners and networks), and support them from the moment they are selected, by doing pre-departure meetings, supporting them with their active participation in the training course, including any help with possible tasks they will be assigned to do, assigned by the project coordinator. We, in this case mostly the partner organisations, should also help and facilitate with travel planning, insurance, visa and identifying participants' learning needs; being supported by the Hosting Organisation: WSH Leszno. You also compromise yourself to be in constant contact with the Project Coordinator, who will be helping with travel point and any other issues which might come during the project.



IMPLEMENTATION

The partners keep in touch with the participants and with the coordinator and you make sure the participants make relevant contributions to the project, from the pre-departure meetings explanation. We make the project visible in your organisation through your social networks, while the TC is on going.

FOLLOW UP

We make sure we meet our participants after the activity to understand what were the learning achievements of the TC, collect the outcomes from it and implement it in our institutions and work. We spread it within our educational institution (through workshops or local reports). We make sure the TC outcomes and learning achievements are spread and disseminated. We give constructive feedback for future improvement. We support dissemination activities.



BEING A PARTNER MEANS...

If the project will be financed by the National Agency, the participants will be counting with:

- Reimbursement of travel, based on **real travel costs**, up to the limit set by the European Commission, after the activity finishes and the individual final report is completed;
- Accommodation, food and materials' spends covered, according to the Erasmus+ rules, plus content and an experienced and passionate team.

Keeping the travel documents and providing necessary documents to the Hosting Organisation (Participants supported by the SO and HO).

Active participation and being present in all sessions of the Training Course (Participants);

Committed to help preparing and developing the TC (both participants and SO);

The Hosting Team/
Organisation - WSH Leszno
is also expecting participants
and partners'
organisations to follow the
next conditions:

Arranging travel in advance based on economy class tickets/ public transports and planning the cheapest trips possible to the project venue and back home (participants together with the Sending Organisation);

To be at the TC place from the first day morning until the last day afternoon/
evening - Not arriving after the beginning of the activities and not leaving before the activities are over (participants);

Keeping the deadlines set up from the Hosting Organisation (both participants and SO);

Being in charge of arranging their own insurance (European Health Insurance Card) - Participants;

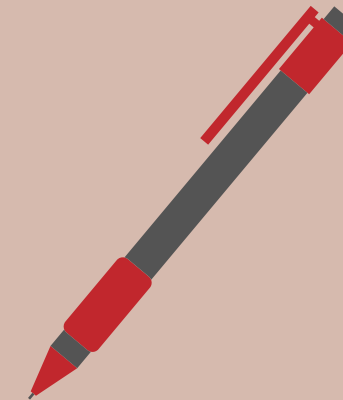
IF YOU WANT TO BE WITH US:

Most of all, by applying to the project, you need to be sure you have participants with the proper profile to send to the venue...



**APPLY
NOW!**

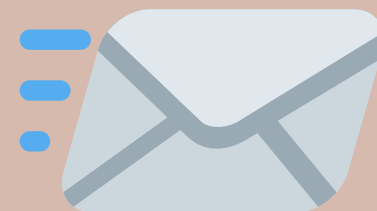
To apply...



Send us an email confirming you'll be partner, together with your PIF (Partner Identification Form) to

wsh.leszno.erasmusplus@gmail.com

until **15.03.2020**



By taking part in the TC as partner you do agree that if you do not succeed in finding suitable participants for this project, missing deadlines or not keeping communication with the Project Coordinator, the Host Organisation/ WSH Leszno will have the right to recruit participants on your behalf.