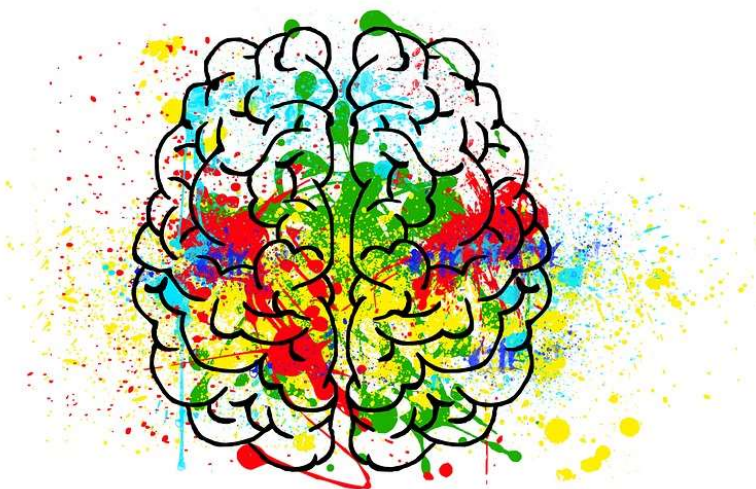


“E-Motion”

Approach to emotional education as a tool for change

KA1. MOBILITY OF YOUTH WORKERS



We are a formally organized non-profit foundation, with the capacity for institutional self control. Fundación Plan B social bases its work on social education. Our actions are mostly determined by the educational intervention approach, through comprehensive education.



Who?

Our approach is a participant-based methodology, always putting the focus on our target group which is the youth, and more specifically rural youth with access to fewer opportunities. This is why we offer them a wide range of activities, which include leisure and recreational activities, employability programs, democratic dialogue with policy makers or academic support, among others, always aiming to improve their lives and to provide guidance in order for them to reach a successful adulthood.

Nowadays we lead the youth centers in Salamanca's (Spain) nearby towns, in which we manage street education, cultural management and democracy and participation projects, as well as newly designed international projects like the one we will describe as follows.

PIC: 905528078

OTLAS: <https://www.salto-youth.net/tools/otlas-partner-finding/organisation/fundacin-plan-b-educacin-social.15810/>

WEB: www.planbeducacionsocial.com

Our idea is to create a KA1 mobility for youth workers project during the third round, targeting organizations working with young people, in order for them to reflect about Emotional Education as an education tool, in order to boost social change and improve skills as youth workers in this field.



What?

Goals

- Bringing the concept of emotional education closer to educators working with childhood and youth
- Understanding the importance of work about the emotions, and with a style that take care about them.
- Exchanging the differences approaches of the concept in different countries
- Providing tools to work with emotional education in different educational areas.
- Getting the motivation to work in it
- Creating communication networks between educators from different fields and different countries

Educative system does not offer any answer to personal emotional needs, because it prioritizes academic contents dictated every year with the same methodology.

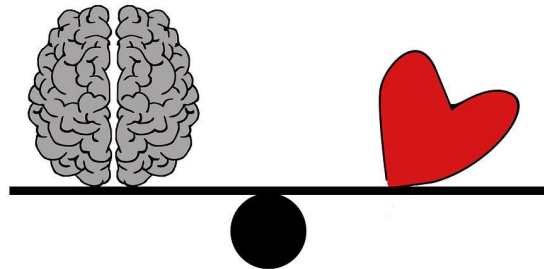
In our daily job with youth we realize that there are some need that we can work on it with emotional education:

- Lack of tools to work about emotions in our everyday life.
- Key to change the society in the future.
- Increasing of psychological problems in the last years.

The young people, in their process of growth and self-affirmation it is important that they feel to have a gap in the predominance adult space, feel that they are also protagonists of the public site as a safe space for their emotions.

In this course we will discuss the importance of emotional education for the educational process of the young people, and how we can use emotional education for the social change.

Why?



Last week of march approximately .
(We can adapt the dates to the partners also)

In the Youth Hostel of **Peñaranda de Bracamonte** a beautiful village near **Salamanca** (Spain)



IF YOU ARE INTERESTED IN BEING A PARTNER OF THE PROJECT PLEASE CONTACT US AT europe@planeducacionsocial.com

