

CALL FOR PARTNERS
TRANSFORMING CONFLICTS
INTO LEARNING
ERASMUS+ TRAINING COURSE

OCTOBER 2018
OMMEN, THE NETHERLANDS



Conflicts allow evolution, change and growth. Most of the times they are not easy to experience, nevertheless they give us a chance to express ourselves and receive the other, in the uniqueness of both.

Having a method to approach conflicts step by step allows to use them as an opportunity to experience connection and create learning.

The training course is designed to support youth workers in developing cross-disciplinary skills and immediately applicable procedures to **handle conflicts constructively, creating flow and learning.**



**JULY-
SEPTEMBER 2018**

**SELECTION &
PREPARATION
OF PARTICIPANTS**

OCTOBER 2018

**TRAINING COURSE
7 DAYS
20-25 PARTICIPANTS**

**NOVEMBER-
DECEMBER 2018**

**FOLLOW UP (ONLINE MEETINGS &
PARTICIPANTS' WORKSHOPS)
DISSEMINATION OF RESULTS**



If you are an organisation from an EU country, active in your local community and interested in the project, this would be your role:

- Appoint a **contact person** that will be in charge of the smooth and prompt communication between you as sending organisation and us as receiving.
- Provide us with the needed information for the Erasmus+ application through a **questionnaire**.
- Finding and selecting the **fitting candidates** for the project, using the profile, infoletter and registration form created by us.
- **Disseminate** and evaluate the results of the project within the network of your organisation. Support the visibility of the project by promoting these results through your social media accounts, websites and whatever other mean you have available.
- Get involved in the follow up period by supporting the participants in **implementing follow up** activities.

Participant's profile

- ❑ 18+
- ❑ Knowledge of English
- ❑ Working in the field of youth
- ❑ Ideally directly Involved in your organisation
- ❑ Highly motivated to implement the follow up activities



There will be participation fee of 75€ for the Training Course.

Participants will be reimbursed with the full amount of money in cash in the end of the Training Course according to distance calculator so they can use travelling money to pay the participation fee.

For example: Marko is travelling to the Training Course from the Czech Republic to Ommen, the Netherlands. His travel expenses are 175€. He will receive 275€ in the end of the Training Course. With 100 € that is left, Marko is able to pay the participation fee.

After the training, the participants will find it easier to:

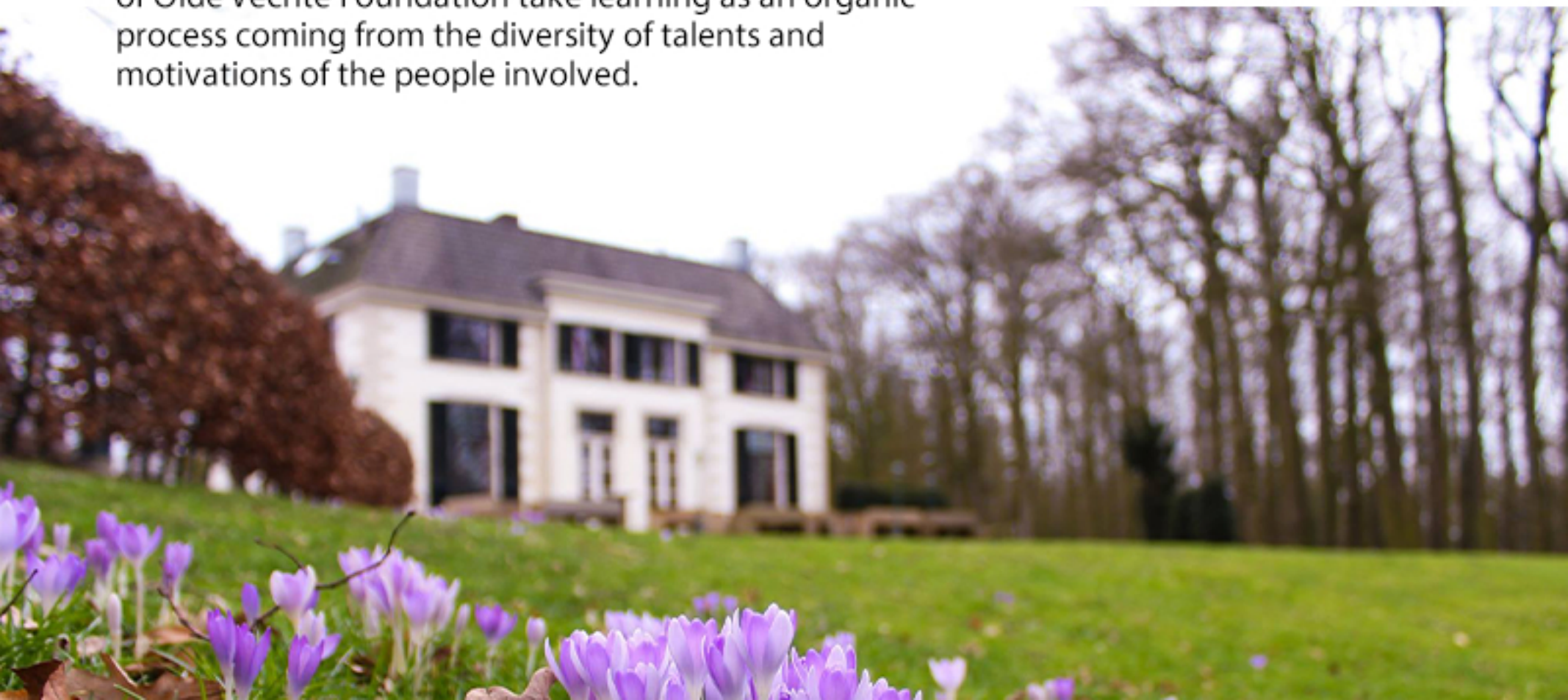
- ▶ Have a proactive approach towards conflicts, allowing you to explore and even enjoy them
- ▶ Keep a lower level of anxiety in front of conflicts
- ▶ Create the conditions for effective communication
- ▶ Leave behind old patterns and automatic responses and develop more options when dealing with conflicts
- ▶ Translate judgements into needs and interests
- ▶ Create safe space for dealing with emotions



We work mainly with experiential learning: learning by doing and by experiencing. Through active processes and interaction with others you will observe how you deal with conflicts, and discover what and how you can do differently. By direct experience, you will also acquire effective and immediately applicable tools that will support you in implementing the new learnings in daily life.

Olde Vechte Foundation

Olde Vechte is a non-profit organization, based in Ommen, the Netherlands. It is an organization with a 50-years experience in non-formal education, coaching, social and cultural work. Throughout the years it has developed site-specific methodologies that had been adopted for different projects. The Foundation is open to anyone who is motivated to improve their personal and professional skills in order to create a better society and a higher quality of life. Striving to bring a spirit and energy to each individual, the trainings, and projects of Olde Vechte Foundation take learning as an organic process coming from the diversity of talents and motivations of the people involved.



**LET US KNOW IF YOU'RE IN, BY FILLING IN THE
QUESTIONNAIRE.**

**PLEASE TAKE YOUR TIME AND CAREFULLY ANSWER TO
THE QUESTIONS BY MAKING THEM
SPECIFIC FOR THIS PROJECT.
IT IS VERY IMPORTANT FOR A SUCCESSFUL
ERASMUS+ APPLICATION.**

**IF YOU HAVE ANY QUESTIONS FEEL FREE TO CONTACT US
AT *INFO.OLDEVECHTE@GMAIL.COM***
