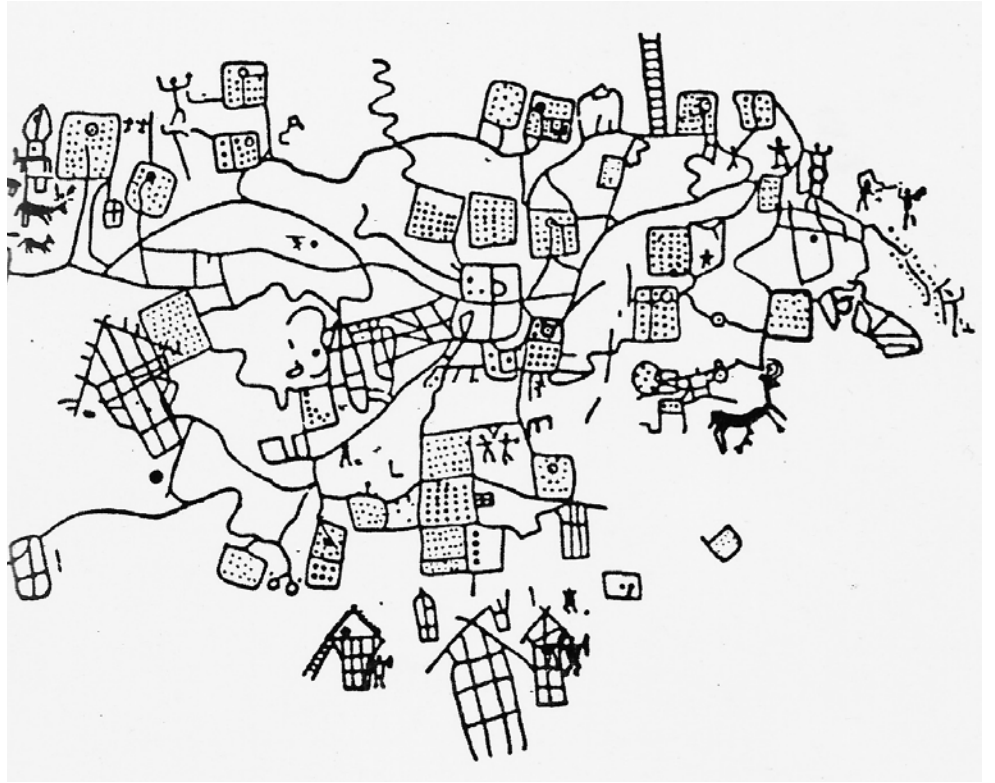




Walkscapes

WALKSCAPES, A BOOK BY FRANCESCO CARERI



Walkscapes deals with strolling as an architecture of landscape. Walking as an autonomous form of art, a primary act in the symbolic transformation of the territory, an aesthetic instrument of knowledge and a physical transformation of the 'negotiated' space, which is converted into an intervention. From primitive nomadism to Dada and Surrealism, from the Lettrist to the Situationist International, and from Minimalism to Land Art, this book narrates the perception of landscape through a history of the traversed space.

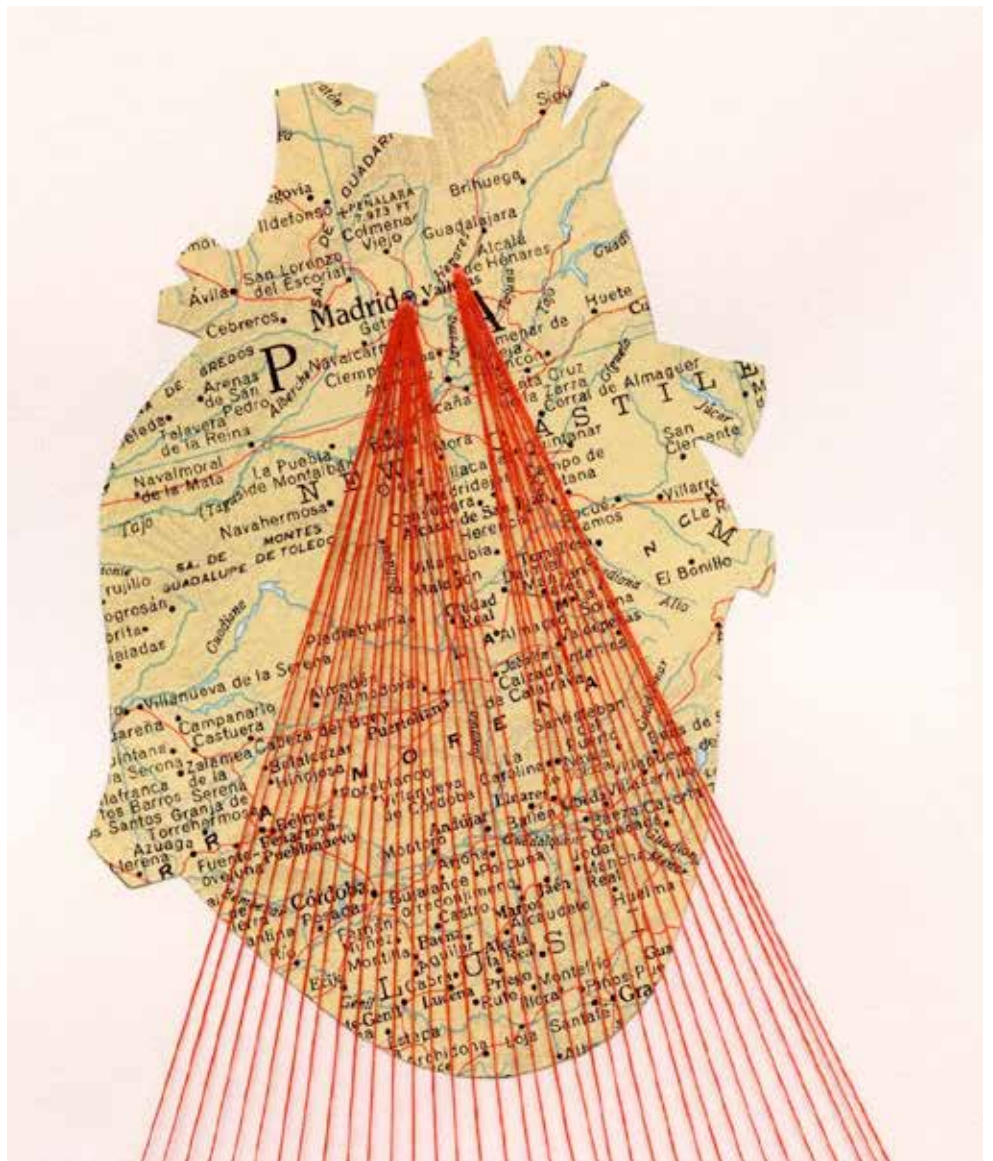
Walkscapes starts from a theoretical base examining the nomadic background to settlement and seeing walking as an aesthetic tool «capable of modifying metropolitan spaces to be filled with meanings rather than things». It links its theory to artistic movements. It suggests that «architecture can transform the path from anti-architecture into a resource... taking a step in the direction of the path».



Walkscapes

SHANNON RANKIN ART MAPS

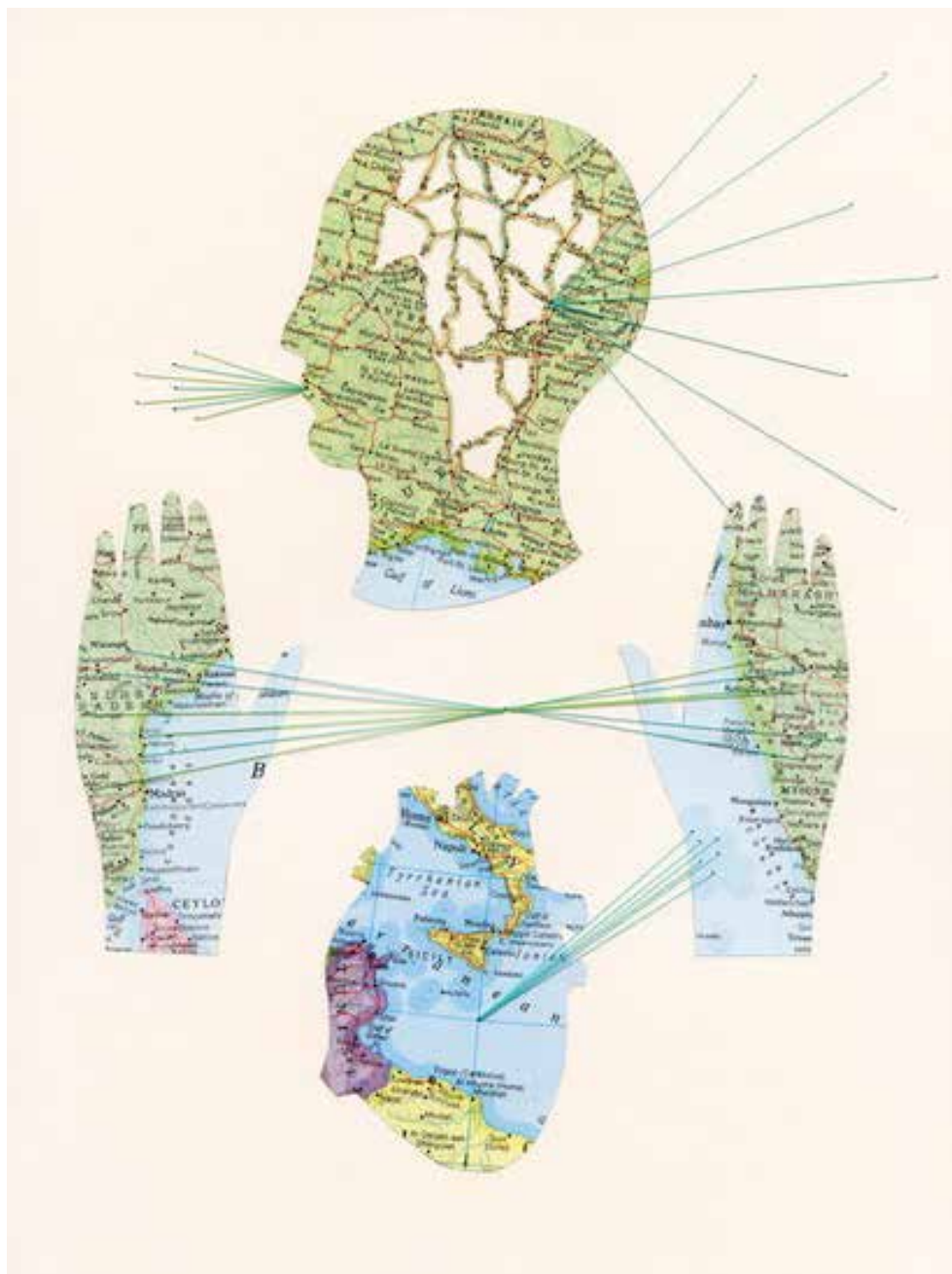
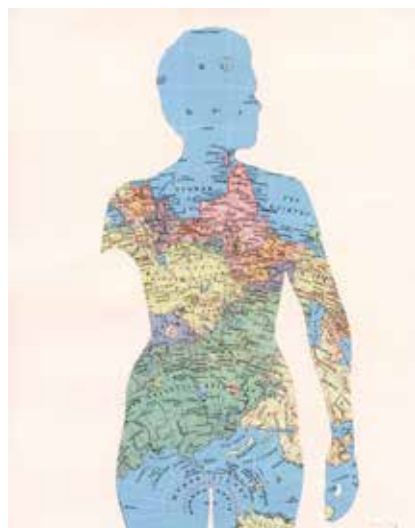
Shannon Rankin creates installations, collages and sculptures that use the language of maps to explore the connections among geological and biological processes, patterns in nature, geometry and anatomy. Using a variety of distinct styles she cuts, scores, wrinkles, layers, folds, paints and pins maps to produce revised versions that often become more like the terrains they represent. These new geographies explore notions of place, perception and experience, suggesting the potential for a broader landscape and inviting viewers to examine their relationships with each other and the world we share.





Walkscapes

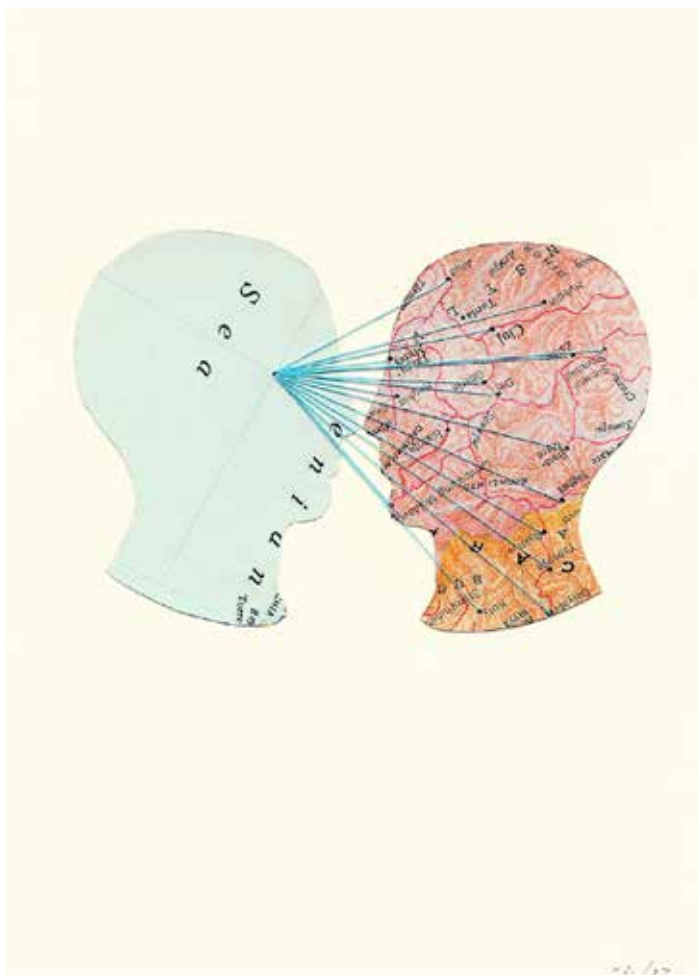
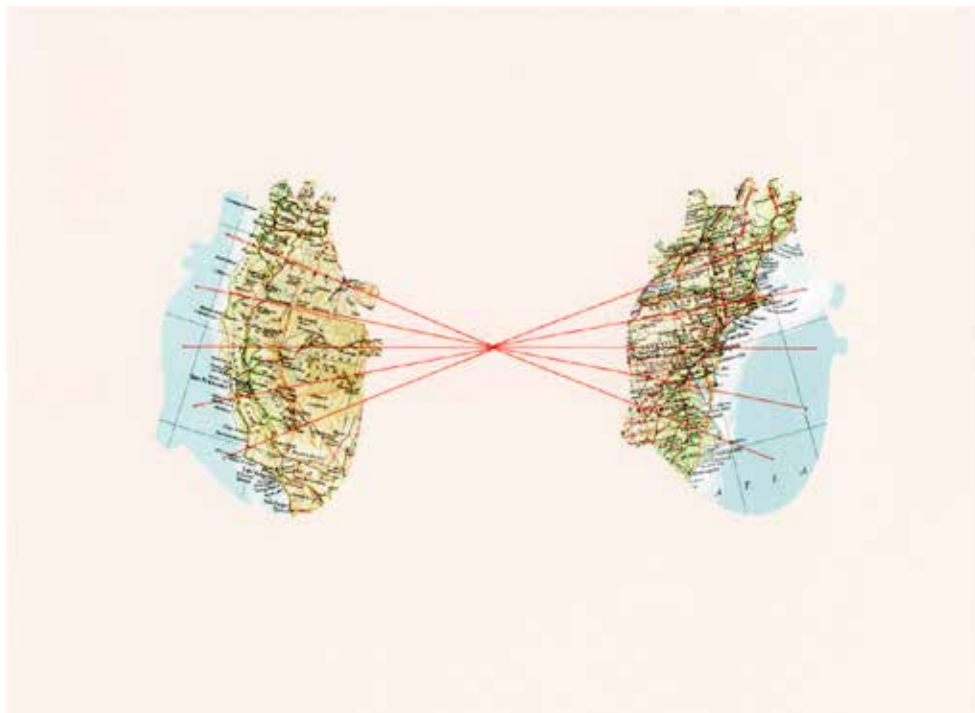
SHANNON RANKIN ART MAPS





Walkscapes

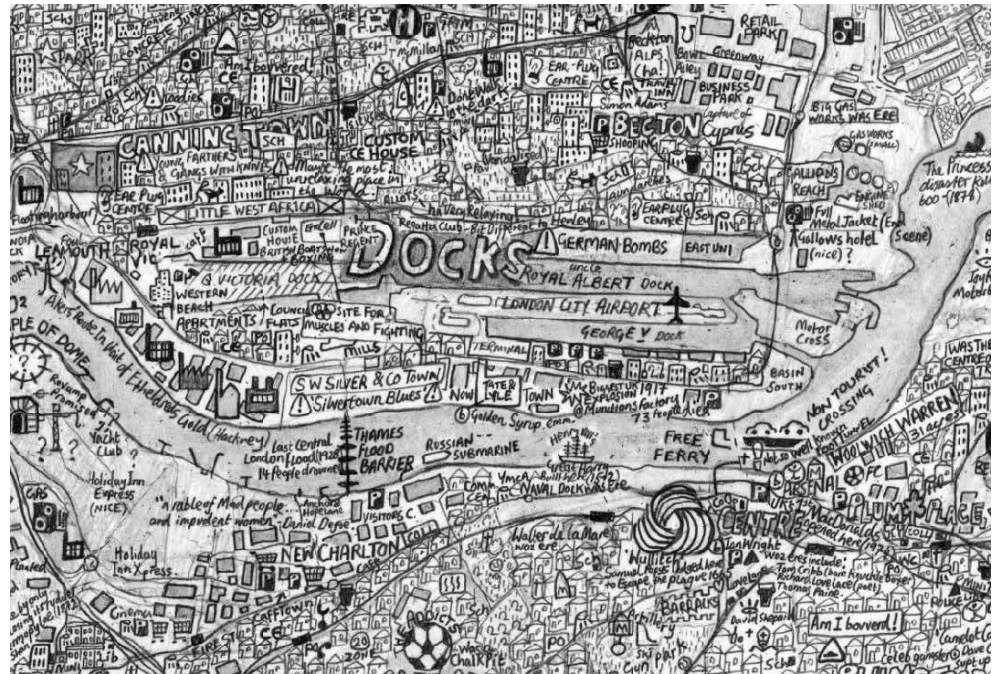
SHANNON RANKIN ART MAPS





Walkscapes

STEPHEN WALTER TYPOGRAPHIC MAPS

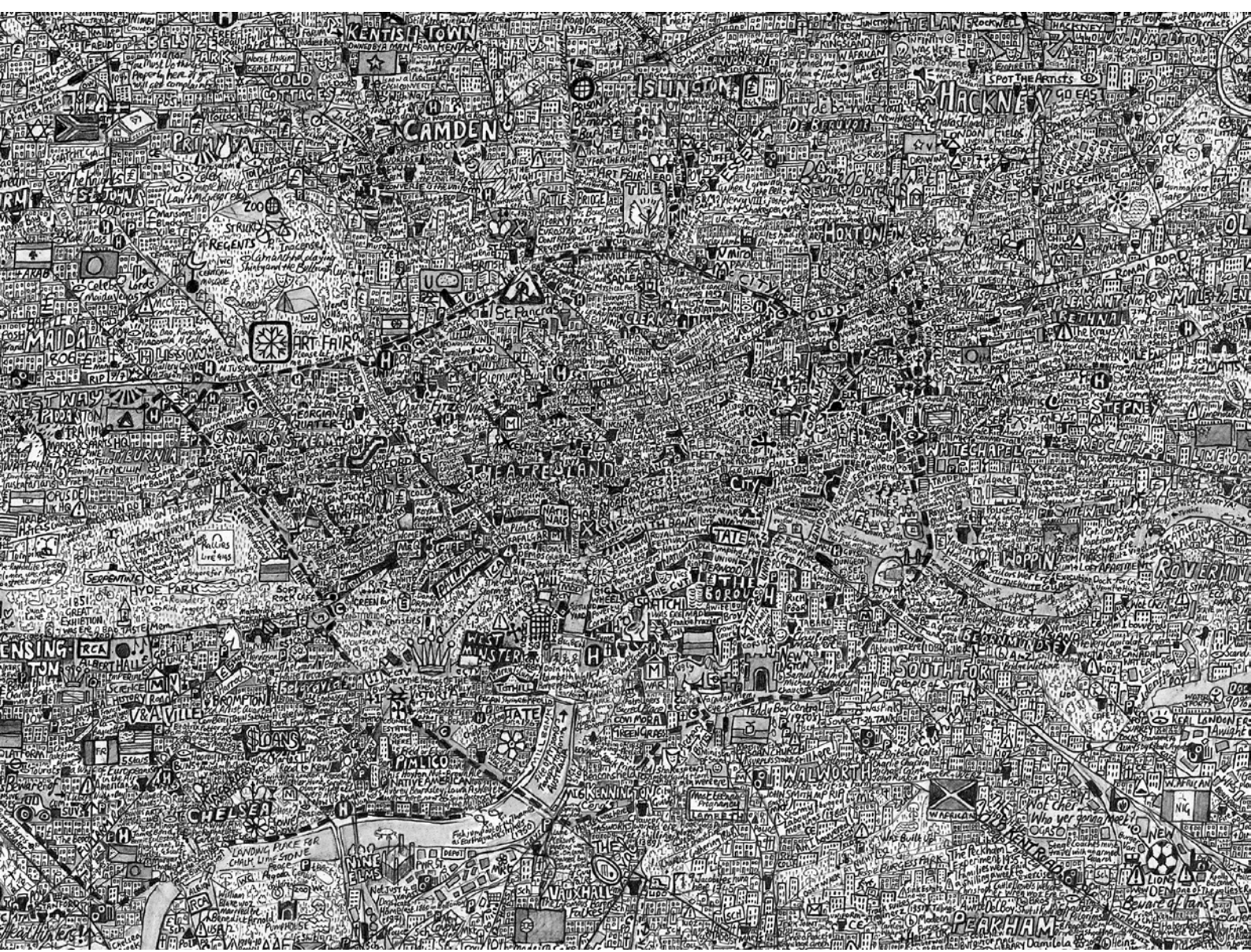


S. Walter has drawn two gigantic maps of London and Liverpool in a sort of report of Situationist drifts (dérives) experiencing the psychogeographies of those two cities. His maps are mostly constituted by doodles and words that places various neighborhoods and its characteristics but also his autobiographical feeling about those places when he went there. Space's representation and narratives are then completely colliding in one document and make S.Walter's maps fascinating!



Walkscapes

STEPHEN WALTER TYPOGRAPHIC MAPS





Walkscapes

SOHEI NISHINO PHOTOGRAPHIC MAPS



Sohei Nishino is using photographs to compose his maps from aerial views by assembling pictures together despite their different vanishing points. S. Nishino chose some very generic photographs from main monuments of each city to make the map more recognizable but one could imagine his work with an approach more similar to Stephen Walter's that would assemble pieces of life brought together with personal pictures that would eventually constitutes the city.



Walkscapes

SOHEI NISHINO PHOTOGRAPHIC MAPS





Becky Cooper set out to explore Manhattan through an ongoing collaborative art project that began in an appropriately personal manner: Cooper became an accidental cartographer when she was hired to help map all of Manhattan's public art. As she learned about mapping and obsessively color-coded the locations, she considered what it took to make "a map that told an honest story of a place" and was faced with the inevitable subjectivity of the endeavor, realizing that an assemblage of many little subjective portraits revealed more about a place than any attempt at a "complete" map.

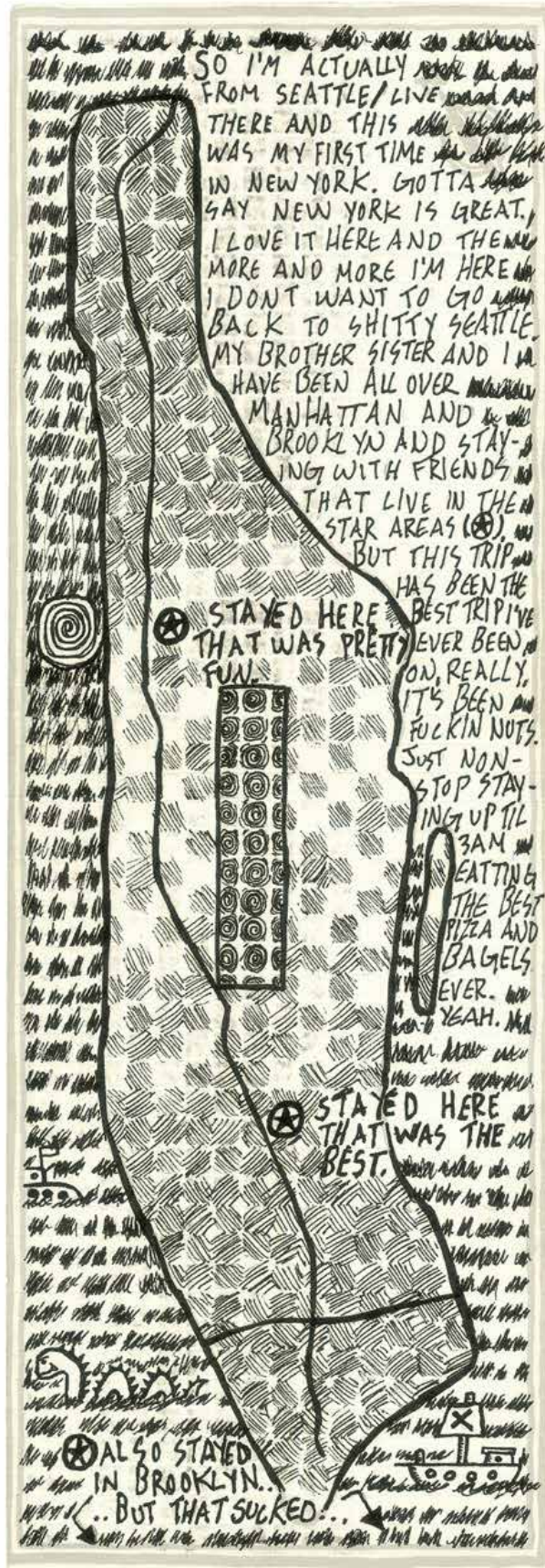
This helped her constitute a tender cartographic love letter to this timeless city of multiple dimensions, parallel realities, and perpendicular views, featuring contributions from both strangers and famous New Yorkers alike.





Walkscapes

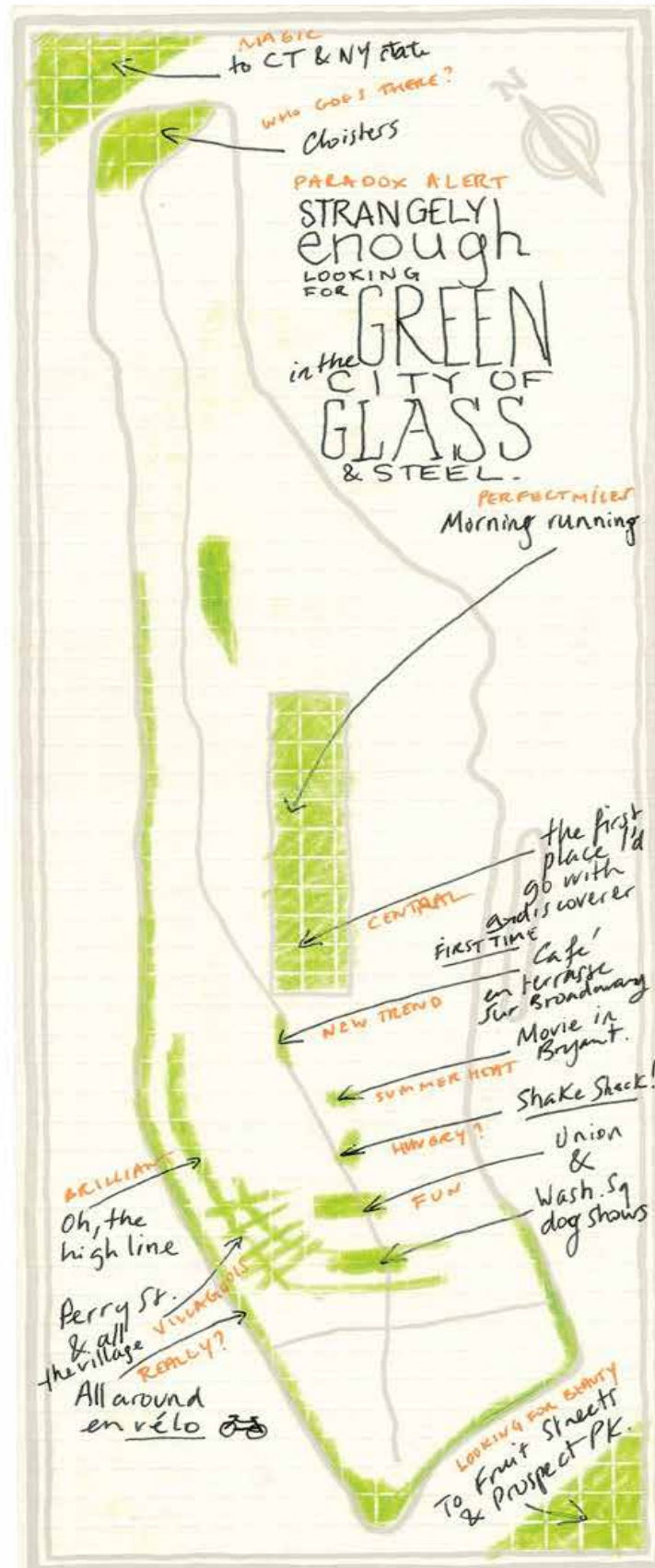
MANHATTAN MAP COLLECTION BY BECKY COOPER





Walkscapes

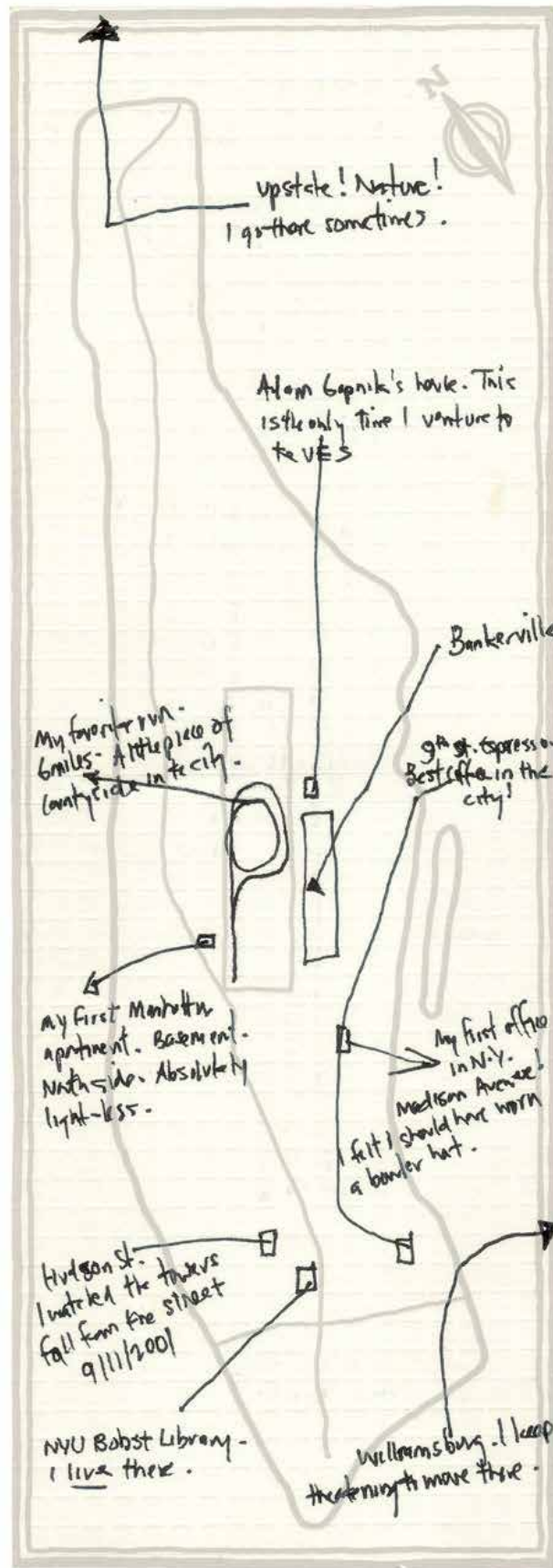
MANHATTAN MAP COLLECTION BY BECKY COOPER





Walkscapes

MANHATTAN MAP COLLECTION BY BECKY COOPER





Walkscapes

ANCIENT TRAVEL MAPS





Walkscapes

ANCIENT TRAVEL MAPS

