



Co-funded by  
the European Union

JUGEND  
für Europa



LEAD ORGANIZATION

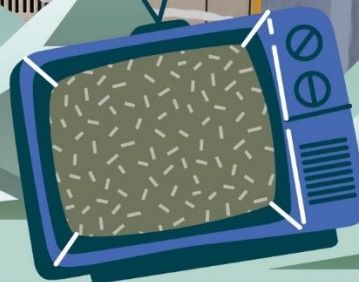
# Media and Information Literacy

for

# Active Digital European Citizens



30 / 05 - 08 / 06 / 2024  
BRZEĆE, KOPAONIK | SERBIA



HOSTING ORGANIZATION: IN PARTNERSHIP WITH:



# WHO WE ARE?

Our host is Crveni krst Krusevac, a humanitarian, independent and voluntary organization formed in Krusevac in 1876, as a local organization in Serbia, and a part of network of Red Cross of Serbia, as the only national society within the Republic of Serbia. Our local organization of Red Cross has 1286 members, more than 500 volunteers (most of them are youth), as well as 4 full time working professionals in the secretariat.



The Red Cross is one of the oldest and most massive organizations in the world. The high level of support and credibility that the Red Cross has is a consequence not only of the recognition of our humanitarian mission, but also of the high level of integrity, objectivity and professionalism of employees and volunteers. The Red Cross helps all people in need, regardless of any differences between them. We are part of a great world movement and participate in providing assistance to all who are affected by a disaster - natural or environmental, war or individual life crisis. We assist vulnerable people with the aim of getting them out of the crisis as soon as possible and returning to normal life.

In the Red Cross of Krusevac, youth can also attend various programs of non-formal education, learn about Erasmus Plus programs, international participation and European values. One of our main goals is to guarantee creative and quality time for youth to spend, by projects in the following themes: non-formal education and training, creative workshops, international youth projects, voluntary work, etc.



# ABOUT THE PROJECT

**Project Title:**  
**Media and Information Literacy  
for Active Digital European Citizens**

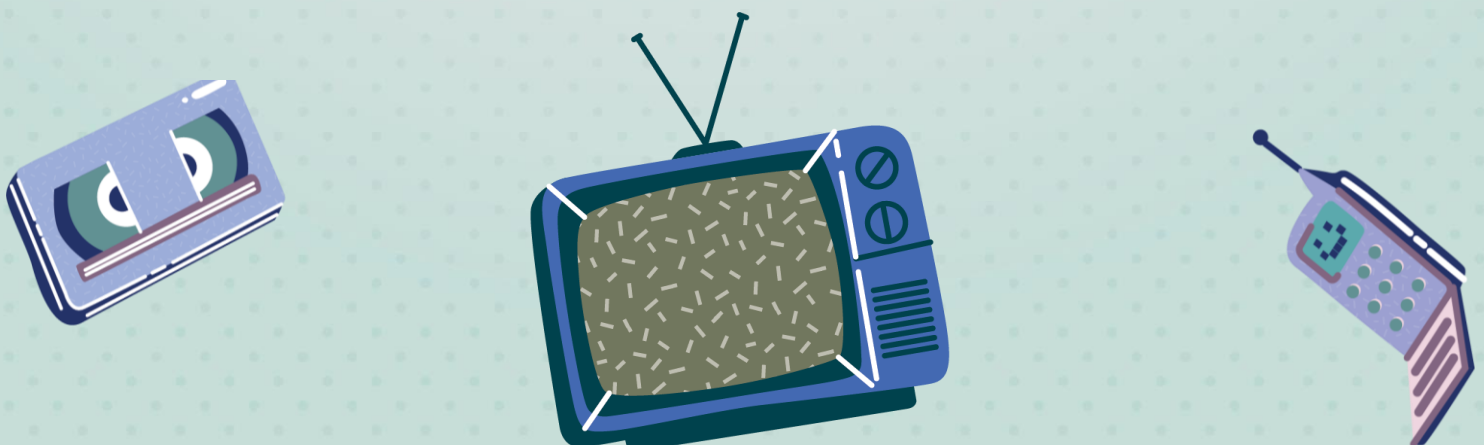
**Project Acronym:**  
**MIL 4 ADEC**



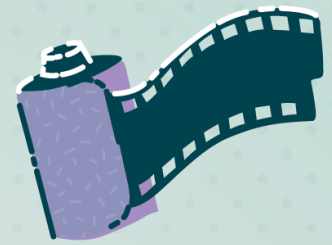
**Media and information literacy is important because it empowers individuals to critically evaluate and understand the media they consume, as well as to communicate effectively and ethically in a digital world. It helps individuals to distinguish between credible and unreliable sources, to understand the role of media in shaping public opinion, and to use media and information technologies responsibly. In today's world, where access to information is easier than ever, media and information literacy is essential for active and informed participation in democratic societies.**

**Motivated by this context and reality, this project will contribute in redirecting the use of MIL, ICT and SM in a way that is collaborative and innovative, produces multiple learning outcomes and develops new skills, essential in the future employability skill set of the youth.**

**Through raising our own awareness and improving our skills as youth workers, we can make stronger impact and have more positive influence on youth, within our communities and on a broader international level, utilizing the Erasmus+ framework.**



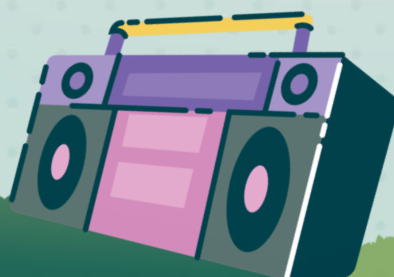
# GOALS?



The main aim of the project is to empower youth workers with the skills and knowledge they need to engage with media in a meaningful and informed way, and to use media as a tool for personal and professional growth and development of their respective communities and youth groups they engage.

**During this training-course, participants will:**

- develop critical thinking skills to evaluate the credibility and reliability of information sources.
- understand how media and information technologies work and how they shape communication and society.
- recognize the role of media and information in shaping public opinion and shaping political and social systems.
- explore civic participation from participants own experiences, resources and opportunities available to address issues of concern through democratic, civil and civic engagement.
- develop, improve and reinforce the digital skills of the youth workers and how to use them.
- understand the ethical and legal issues related to the use of media and information.
- promote the active and responsible use of media and information in various contexts, such as education, work, and civic engagement.
- encourage the development of media and information literacy skills among different groups, including marginalized and disadvantaged communities.
- develop the ability to effectively access, use and create media and information for personal and professional purposes.
- understand the role of media and information in promoting cultural diversity and intercultural dialogue.



# PARTNERS

This project included ten partner organizations from ten countries, the leading organization being Lucky Punch Jugendhilfe gGmbH from Germany, and the host organization Crveni krst Krusevac (Red Cross of Krusevac) from Serbia.

- **GERMANY - Lucky Punch Jugendhilfe gGmbH**
- **SERBIA - CRVENI KRST KRUSEVAC**
- **NORTH MACEDONIA - BRIGHT**
- **TURKIYE - Demokrasi ve Hukuk Calismalari Dernegi**
- **SPAIN - YOUTH BCN**
- **ITALY - MAEK APS**
- **PORTUGAL - Fortes Sempre**
- **POLAND – Level Up**
- **BULGARIA - YOUTH SENATEBULGARIA**
- **ROMANIA - Asociația Culturală Moldavia**
- **HUNGARY – Lélektér Alapítvány**

LEAD ORGANIZATION: IN PARTNERSHIP WITH:



LEAD ORGANIZATION



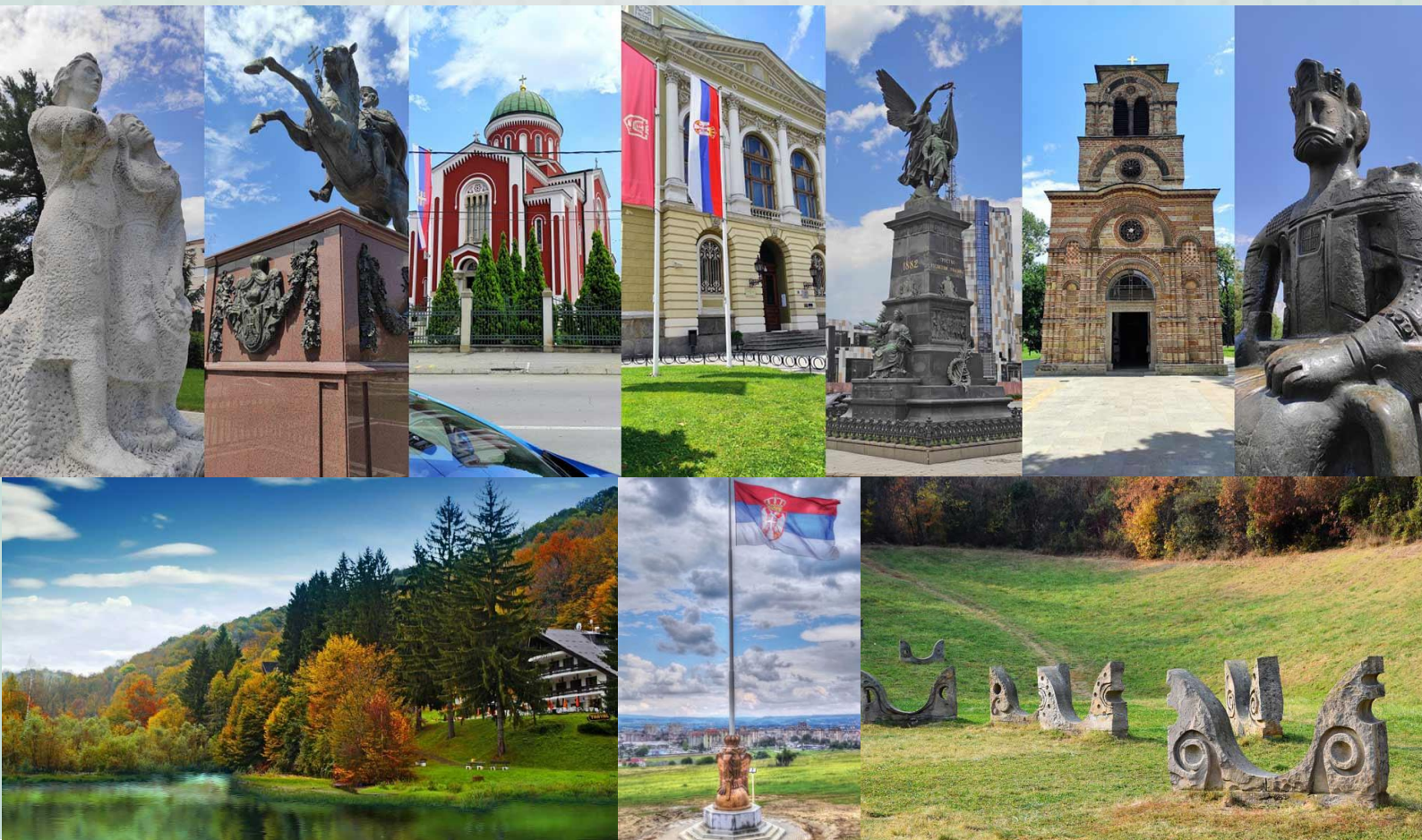
# THE VENUE

**The City of Krusevac is medieval capital of Serbia, located in the heart of Balkan region. It has been the second biggest industrial center in this region and the main town in The Rasian District. It has population around 113.000 people, with more than 20% of youth.**

**This gorgeous mountain of Kopaonik is extremely suitable for this kind of projects, because it is pure nature, suitable for hikers, climbers and recreational athletes who enjoy climbing the mountains and taking walks along the long meadows filled with natural springs and waterfalls, for mountain cyclists, scouts, as well as for height preparations of professional sports teams.**

**In coordination with partners, the transport of participants will be organized from Krusevac (which has a train and bus station well connected to all airports in the country: Belgrade, Nis and Kraljevo, as well as to Skopje) to Brzece (our final destination).**

**For more information please visit: <http://www.turizamkrusevac.com/en/>)**



# THE ACCOMMODATION

During the training-course, you will be staying at Vila “Ivanovic” - Brzece.

Adress: Dostojevskog bb, 37000 Krusevac, Serbia.

The participants will be accommodated in double bed rooms. All rooms have a bathroom with free toiletries, towels, a hairdryer and a shower.

You don't need to take your own bed linen with you.

Parking within the building can be used free of charge.

At this accommodation, guests can relax in the shared lounge.

The reception is open 24-7.

The hotel has fast Wi-Fi.

Regarding food: breakfast, lunch, dinner and two coffee breaks will be provided at the accommodation.

Working program will be usually organized in the conference room inside the accommodation.

Participants are expected to arrive to Vila “Ivanovic” - Brzece, where the training course will be organized on 30/05/2024.



# GETTING TO KRUSEVAC

## **BY PLANE:**

Numerous foreign airline companies are serving scheduled flights to Belgrade. (Airport Code: BEG) 26 airline companies covered more than 50 destinations. More info about Belgrade airport "Nikola Tesla" you can find on: <https://beg.aero/eng>

## **FROM AIRPORT TO BUS STATION:**

From Belgrade airport to main train station (train station is nearby bus station) you can come by Mini bus line A1. We recommend this way of transport. It runs every 20 minutes and starting point is just in front of the airport. When you step out, on your left. Ticket price is around 3.5 euros (400 rsd) and you will need around 30 minutes to get train station. You can see the photo of the mini bus. →



← Another option is local transport, bus number 72. It stops 500 m away from bus station in Zeleni venac (the last stop). Ticket price around 3 euros and you will need around 30-40 minutes from airport to Zeleni venac and 10 minutes walking to bus station.

\*\*\*We suggest using bus from Belgrade to Krusevac.

Several companies are flying to Nis Contantine the Great Airport (Airport code: INI)

If you are traveling to Nis airport, in order to get to Krusevac you can use public transport, there are busses just in front of the airport, on your right waiting for passengers and driving them to main bus station in Nis. Since it is a very small airport, busses are waiting the planes which arrive to Nis and taking them to main bus station. The price of the ticket is around 300 RSD (approx. 2,5 Euros).

From main bus station in Nis, there are several companies driving to Krusevac:

You have busses from Nis to Krusevac on following hours:

05:30 07:25 08:15 10:30 12:05 13:00 14:30 15:15 16:00 17:00

...it will take you 1h 30 minutes, or 2 h 30 minutes, depending of a company.



## **BY TRAIN**

Numerous international railway lines link Serbia with all parts of Europe. However, we suggest to use railway transportation only for international transportation. Within Serbia, use railways only if you are adventurer. From Belgrade to Krusevac we suggest to use buses.

## **BY BUS**

There are many bus routes linking Serbia with other European countries. Getting around Serbia by bus is a good option even though bus services vary greatly in speed and comfort. Bus schedule from BelGraDe to KRUsevac (return ticket is around 20 Euros):

<b>BGD</b>	<b>KRU</b>	<b>BGD</b>	<b>KRU</b>	<b>BGD</b>	<b>KRU</b>
<b>Dep</b>	<b>Arr</b>	<b>Dep</b>	<b>Arr</b>	<b>Dep</b>	<b>Arr</b>
05:45	08:20	11:30	14:07	15:10	17:45
07:00	09:45	12:15	14:45	16:30	19:15
08:00	10:55	13:45	17:00	17:15	20:00
08:15	10:50	14:15	17:00	18:00	20:40
09:30	12:25	15:00	17:45	19:00	22:00
10:00	12:35	15:00	17:45	20:00	22:40

Left column means Departure time from Belgrade and the right column means Arrival time to Krusevac.

In case you will not be coming through Belgrade, two nearest cities to Krusevac in Serbia are Nis and Kraljevo. From there to Krusevac, busses are running very often.

On this website you can find buss timetable for Southeast Europe (please have in mind that this site quite some times is not accurate, so please double check): <http://www.balkanviator.com/en/bus>

**Transport within Krusevac:** Most of the things you will need in Krusevac are walkable, taxi is also very affordable (for all city rides around 3 – 3,5 EUR), and we recommend this type of transport from bus station to Hotel Dabi. Please if you have to use taxi, share it with other participants, and ask for the receipt in order to be able to reimburse costs.

## **IMPORTANT:**

When arriving to Belgrade by bus, have in mind that one bus station has arrival terminal and departing terminal. It might happen that taxi drivers offer you transportation to departing terminal, but it is only 50 meters away. Just ask someone.

# THE BUDGET

There is **NO PARTICIPATION FEE** by the organizers.

**Food, accommodation and local travel costs (only during the duration of the activity program) will be covered by the grant from the National Agency for the Erasmus+ Programme of EU.**

**According to the agreement made by partner organisations travel reimbursements will be made by bank transfer to the Partner Organization.**

**The bank transfer will be executed after reception of all of the original documents (receipts, invoices, boarding passes and reimbursement claims) by post, or e-mail depending if they are digital or hard copies. Additionally, the form generated by the Erasmus Plus has to be completed: the online evaluation form through the should be completed by all group leaders, and the dissemination of the results must be completed by participants.**

**We recommend using green travel (bus, train, shared car...), as a sustainable travel option!**

No.	Country of residence	Number of participants	Limit for the travel reimbursement
1.	<b>GERMANY</b>	<b>4</b>	<b>275 €</b>
2.	<b>SERBIA</b>	<b>4</b>	<b>/</b>
3.	<b>NORTH MACEDONIA</b>	<b>4</b>	<b>180 €</b>
4.	<b>BULGARIA</b>	<b>4</b>	<b>180 €</b>
5.	<b>SPAIN</b>	<b>3</b>	<b>275 €</b>
6.	<b>TURKIYE</b>	<b>3</b>	<b>275 €</b>
7.	<b>ITALY</b>	<b>3</b>	<b>275 €</b>
8.	<b>PORTUGAL</b>	<b>3</b>	<b>360 €</b>
9.	<b>POLAND</b>	<b>3</b>	<b>275 €</b>
10.	<b>ROMANIA</b>	<b>3</b>	<b>275 €</b>
11.	<b>HUNGARY</b>	<b>3</b>	<b>180 €</b>



# THE RULES FOR THE REIMBURSEMENT:

**Please, be sure you take all the tickets or bills with you for the travel reimbursement! Without originals we will not be able to reimburse.**

1. We encourage you to choose the most economic and sustainable means of transportation that will be accepted by the Partner Organization country. Before purchasing any ticket, please send your proposed travelling itinerary to [slobodan.antic12@gmail.com](mailto:slobodan.antic12@gmail.com) for confirmation. Please keep in mind that we do not accept invoices from taxis and travel agencies.
2. Only participants who take part in all activities organized during the youth exchange are entitled to be reimbursed.
3. Only the interrupted travel expenses incurred within the activity start and end dates can be accepted for reimbursement. If you wish to stay in Serbia or at the venue itself longer than the activity end date and you obtain tickets for the same or lower value as the one on the actual travel dates, then you can travel one day prior, or one day after the training course as well; however, if participants decide to arrive earlier or stay longer (up to 2 days), all costs related to that will be paid by the participants themselves.
4. In order to avoid any unnecessary issues (e.g. loss of tickets, boarding passes ect. by the post) please send us scanned copies of all your travel documents by email to [slobodan.antic12@gmail.com](mailto:slobodan.antic12@gmail.com) before mailing them via regular post. Please note that no flight tickets will be reimbursed if the original or electronic invoice is not provided as well.
5. All expenses must be converted to euros by using the official exchange rate of the European Central Bank (ECB) on the date when the expense was paid.

**Link to ECB:** <http://www.ecb.europa.eu/stats/exchange/eurofxref/html/index.en.html>

6. The maximum to be reimbursed per participant is highlighted in the table above and it was calculated by the distance calculator of the European Commission.
7. Insurance costs do not fall within the scope of reimbursement eligibility. This means that each participant must support his or her own insurance that covers: travel (including damage to or loss of luggage) wherever relevant; accident and serious illness (including permanent or temporary incapacity).

# THE ADDITIONAL INFORMATION

## TRAVEL AND HEALTH INSURANCE:

All participants **MUST** bring their **European Insurance Card** or **HEALTH INSURANCE**. We recommend taking out travel insurance also.



## PASSPORTS AND VISAS:

Please make sure that your travel documents (passport or ID) are valid for at least 6 months from the date of return and make sure that you have travel insurance (travel health <sup>and</sup> accident insurance). In the case that you need Visa to enter Serbia, please let us know, so that we can assist you.

Foreign citizens may enter Serbia with valid passports. Visas are not required for all EU, and Schengen citizens. If you need more information on the Visas and custom, regulations visit the website of the Ministry of Foreign Affairs of Republic of Serbia.

## WEATHER:

Weather in May and June should not be cold, but it could be since we are on the mountain, so keep in mind that. Usually it is around 22-27 degrees Celsius. However, please do have something warmer in case it gets colder during the nights.



## MONEY EXCHANGE

The official currency is DINAR (RSD). Bills can only be paid in RSD. The foreign currencies can be exchanged in the official exchange offices across the city or banks and post offices. Exchange offices, banks and post offices are open from 08:00 to 19:00 hours on weekdays, and from 08:00 to 15:00 on Saturdays. You should change money when you arrive to Serbia, in order to buy bus or train tickets only in Serbian Dinar (RSD).

Here are some examples of local prices:

One coffee at a coffee shop costs around 1,5 €.

One juice in a pub cost 1 - 1,5 €.

One cake in a patisserie cost around 2 €.

Two breads in a bakery cost around 1 €.

Exchange rate 1€ = around 117 RSD.



## ELECTRICITY

Electricity in Serbia is 220V; 50Hz.

Continental Europe (Schuko) plugs are used.

## DRINKING WATER

Tap water is excellent and safe to drink in Krusevac and almost whole Serbia.

## THINGS TO BRING:

- Some traditional snacks, local food, music and drinks that you want to share with the others (intercultural evening can be organized in case you as a group want to organize it).
- Representative materials about your sending organization, country, city, town, or the region that you came from (brochures, presentations, CD's, etc.)
- And always welcome: Good mood and many smiles! 😊

# THANKS A LOT FOR KEEPING IN MIND ALL OF THESE!

For any further question,  
assistance or clarification  
please, do not hesitate to contact us.  
We will gladly help you organize your travel  
to Serbia and Krusevac – Brzece – Kopaonik.

## WE ARE LOOKING FORWARD TO MEETING YOU IN SERBIA!

**Contact person:**

*Slobodan Antić*

[slobodan.antic12@gmail.com](mailto:slobodan.antic12@gmail.com)

Phone - WhatsApp - Viber:

+381 62 8141911

