

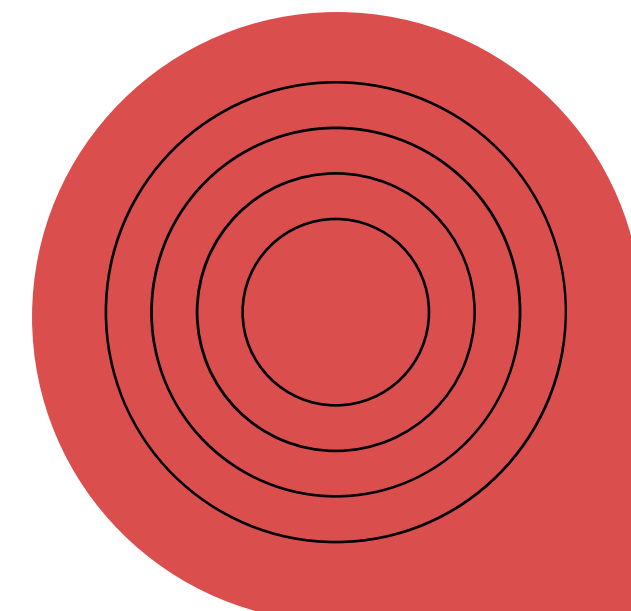
INFOPACK

Follow the trail

*On the path to
inclusive outdoor
education*



**Co-funded by
the European Union**



What is it about?

TO.U.T.A and RE:ACT Volda are organising a two-phase mobility of youth workers on the topic of inclusion in outdoor education:

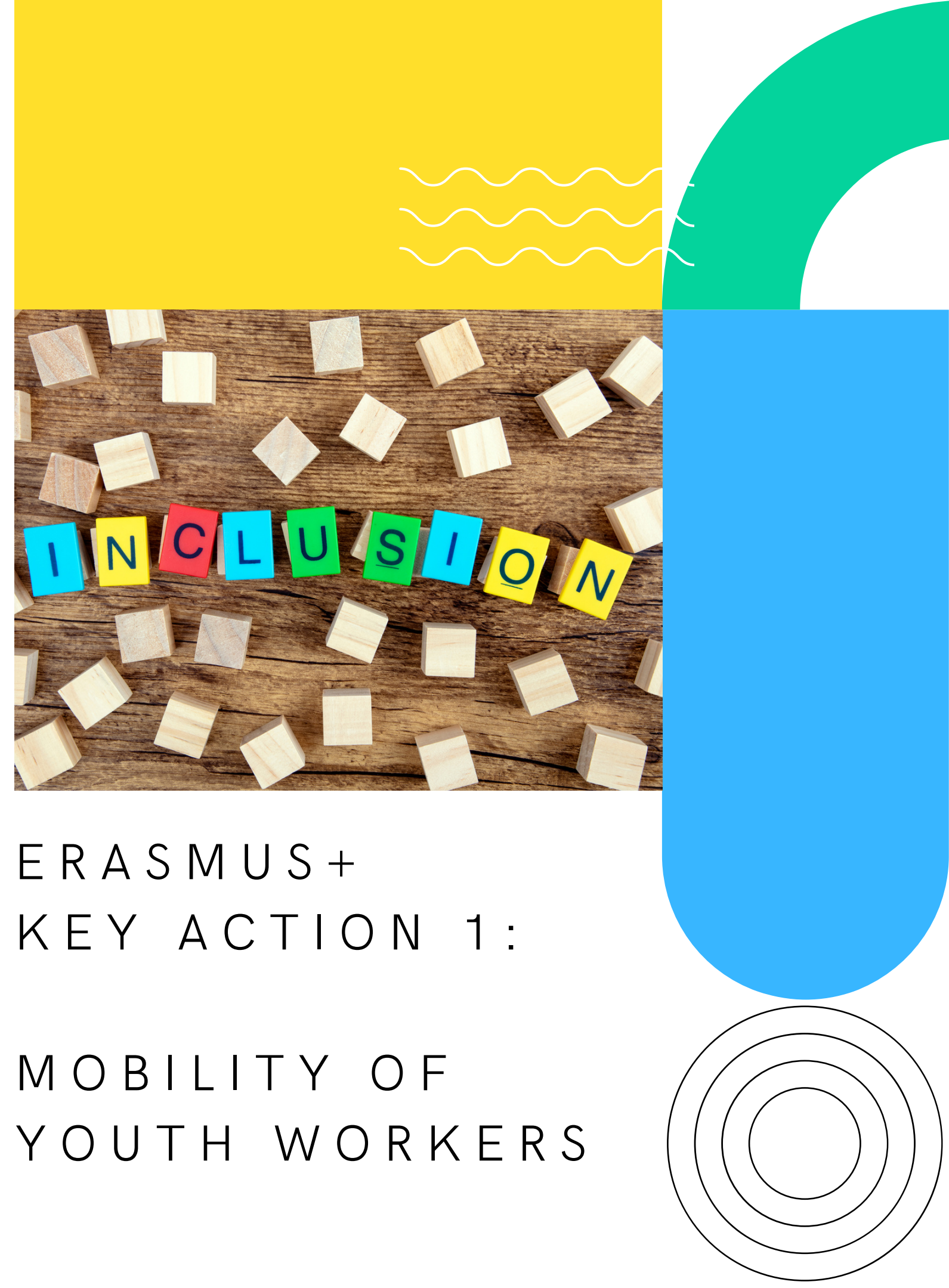
- Phase 1: **April 3rd-10th 2024** in Saint Maurice en Trièves, France
- Phase 2: **July 2024** – exact dates TBC in Volda, Norway

The aim of this project is to raise awareness, and in practice, mainstream inclusive outdoor activities. During the two mobilities, you will take part in different types of interactive sessions and workshops. We will then work on a joint outcome: a fully-fledged programme of outdoor activities, designed for youngsters with various accessibility needs.

By taking part of this training course, you will...:

- Learn how to make the most of outdoor education – combine physical exercise, sports and team activities, together with non-formal education: games and experiential learning, holistic learning, open-ended learning, etc.
- Monitor progress and promote inclusive practices in your organisation or among tour , in order to create equal opportunities for young people
- Network, draft recommendations and issue guidance on future youth activities

This project is entirely funded by Erasmus+. Accommodation, catering (3 meals and 2 coffee breaks) and relevant travel expenses are all covered for the duration of the stay. With prior approval, participants should buy the tickets themselves and will be reimbursed during the mobility.



ERASMUS +
KEY ACTION 1:

MOBILITY OF
YOUTH WORKERS

Application

PARTICIPANTS PROFILE

5 participants per country (18+): youth workers, youth leaders and young people, with a disability background or working on the topic of disability.

We welcome applications from youth who are typically under-represented in educational activities of this kind, as well as those who (self-) identify as being disabled in any form.

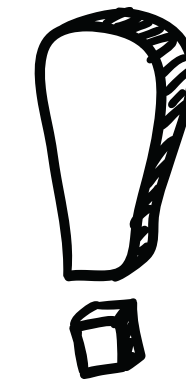
APPLICATION FORM

Fill in the application form through this link:

<https://forms.gle/WaanmYjE5PhRU7Dt8>

Deadline for applications:

17th March 2024



SELECTION PROCESS

Applicants will be selected based on their motivation and notified shortly about their participation.

Keep an eye on your email!

Phase 1 - Saint Maurice en Trièves, France



03RD APRIL 2024
ARRIVAL DAY

Participants must arrive on **03rd April 2024** or early morning of the following day. Transportation details from the airport/train station to the accommodation will be given once participants have their tickets.



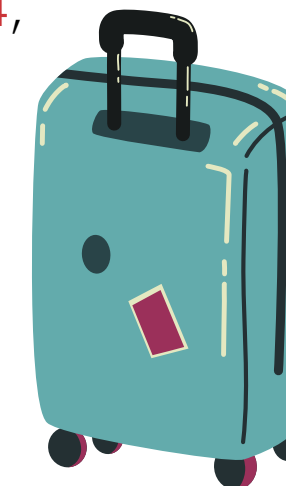
04TH-09TH APRIL 2024
TRAINING COURSE

The training course starts **04th April 2024**, at 10:00 AM and lasts until **09th April 2024**, 18:30 PM.



10TH APRIL 2024
DEPARTURE DAY

Participants are expected to leave the venue after breakfast on **10th April 2024**.





Accommodation - Phase 1

ERMITAGE JEAN REBOUL

Participants will be accommodated in the Ermitage Jean Reboul, (60 km from Grenoble). While the place is located in the mountains, it is fully accessible to people with different mobility needs.

<https://avt-sejours-pour-tous.fr>



Transportation reimbursement conditions

MAXIMUM
TRANSPORTATION
REIMBURSEMENT PER
PERSON AND PER
COUNTRY

CONDITIONS

Regular tickets :

Participants must bring the original invoice, a proof of payment and their boarding pass. Prices on the receipt or invoice must coincide with the price on the ticket.

E-tickets :

Participants must send their e-tickets with their name, price of the fare and details of the flight on the same page. They must provide a proof of payment (credit card receipt or bank statement). On arrival, they must hand in their boarding pass.

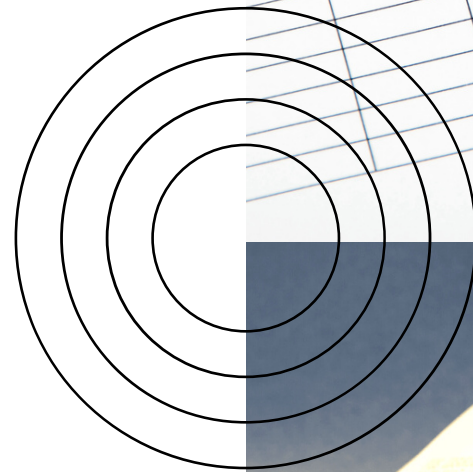
France : 180 euros (green travel)
Belgium : 290 euros (green travel)
Latvia : 245 euros
Norway : 245 euros
Portugal : 290 euros (green travel)

Note: 30 euros per travel grant were already subtracted to organise local transportation to the venue.

***These conditions are imperative for the reimbursement process.**



Reimbursement will be made by bank transfer or possibly in cash in euros, during the mobility and according to the following conditions :



ATTENDING THE WORKSHOPS

Attendance and active participation.

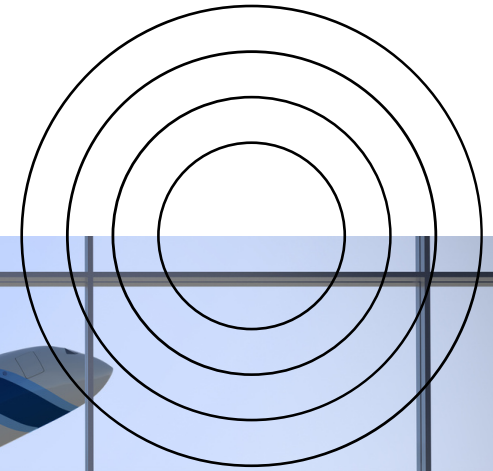
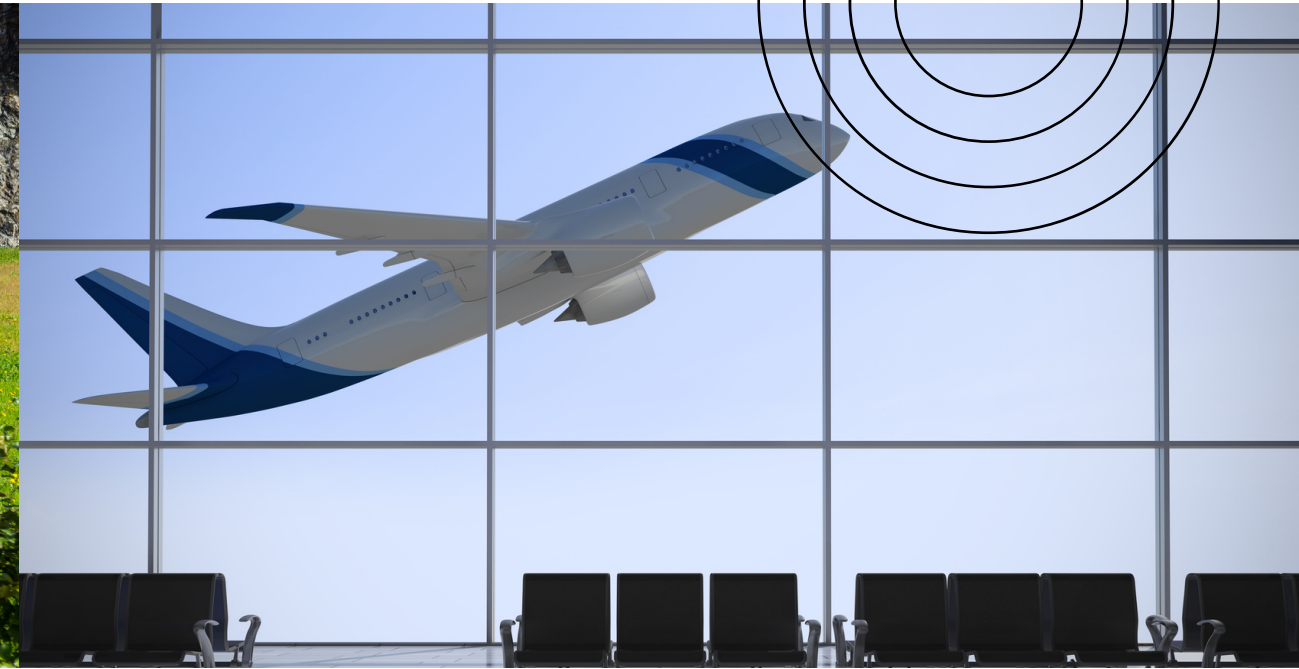
DELIVERING ALL NECESSARY DOCUMENTS

All documents listed above must be duly submitted to the organisers as soon as possible – we reserve the right to ask for them on your arrival.

DISSEMINATING THE PROJECTS RESULTS

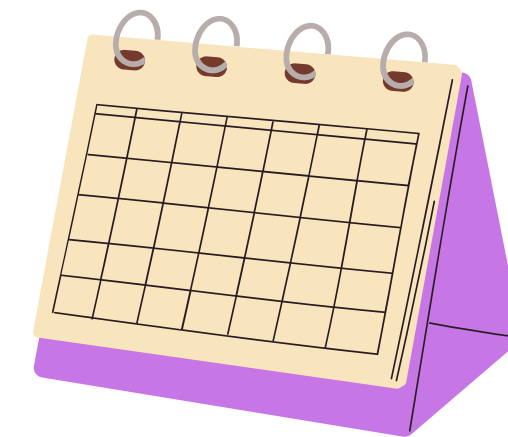
Participants will jointly create a tangible outcome, in relation to the project findings.

Phase 2 - Volda, Norway



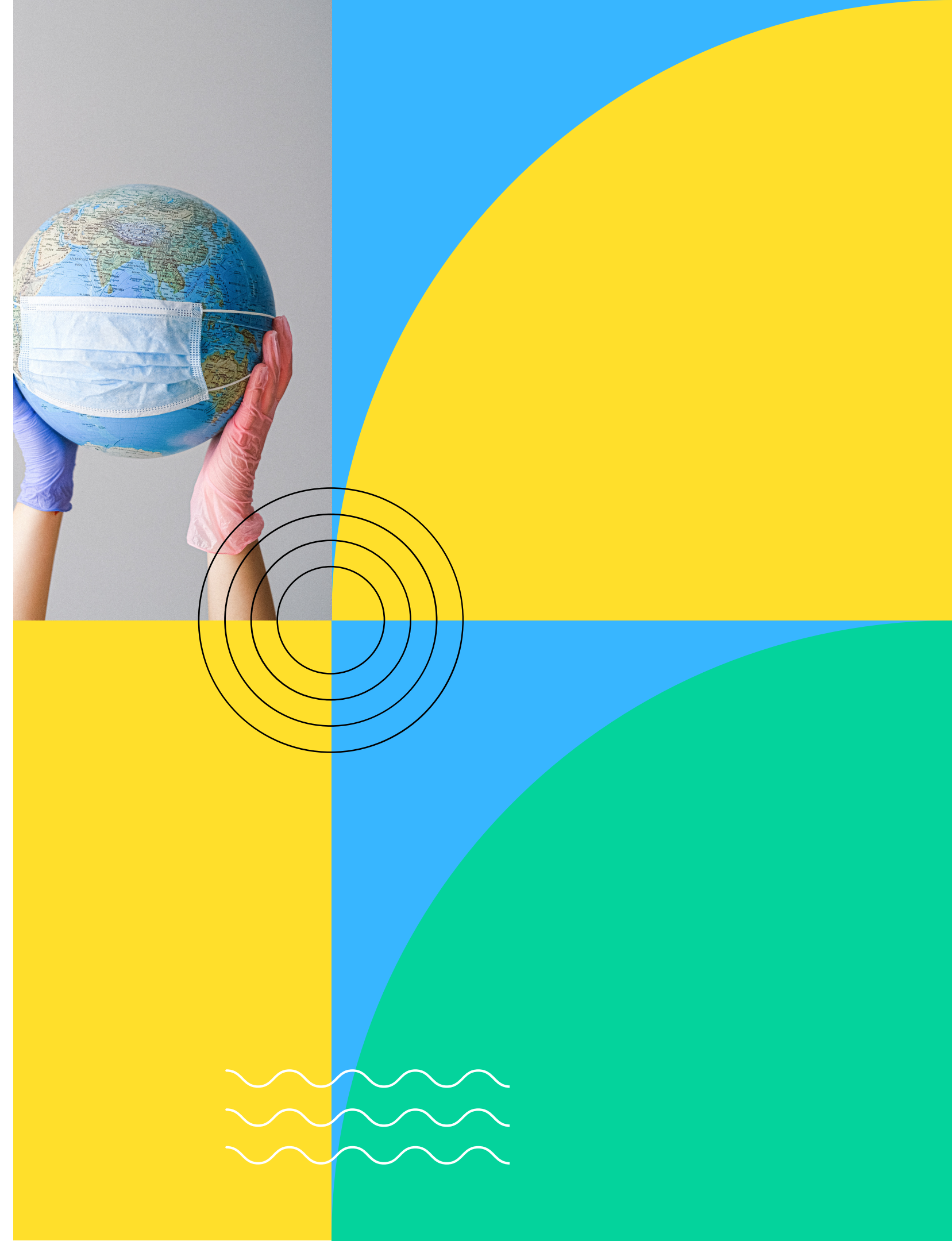
JULY - TRAINING COURSE

The second mobility will take place for a week in July, on a farm in the mountainous region of Volda, Norway. Exact dates will be confirmed later on. Travel reimbursement and other logistical matters will be explained during the 1st phase of the project.



Health Insurance & Covid

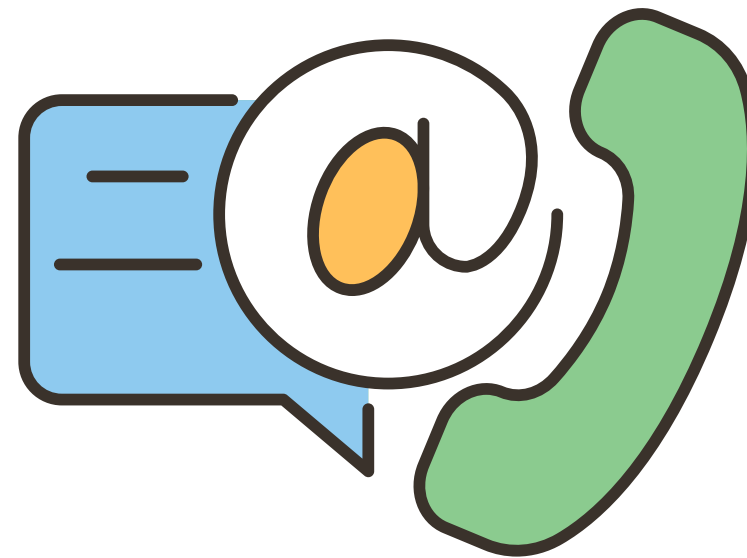
Participants need to have their own health insurance and are likewise responsible for their own travel insurance. They should also bring their medicine or masks if they need them.



THIS PROJECT IS FINANCED BY



Erasmus+



Feel free to contact us for any additional information :

jacquart.marion@gmail.com
jlibiszewski@gmail.com