

# THE VALE

VALUE-DRIVEN ADVANCED LEADERSHIP COURSE

## Call for PARTICIPANTS

Deadline for application **7 AUGUST 2023**



# WELCOME TO THE VALE!

With this **transformational training course**, we seek to move beyond the classical leadership training book by prioritising depth and impact to help participants grow their leadership competencies and understand the personal values that guide them – **empowering them** in their everyday leadership, volunteer work, and in positively shaping the world around them.

## EMPOWERING YOUNG, GLOBAL CHANGEMAKERS

In today's world, leadership extends beyond the ability to guide others, it demands an understanding of personal values and self-leadership. This belief recognises that each individual possesses the potential to influence change, reaching beyond their immediate circle into broader communities and spheres of influence.

In our mission to support this, we at The VALE are committed to equipping youth workers with the necessary tools and networks to harness their potential. This process hinges on developing the *personal leadership*, built on an individual's understanding, abilities, and attitudes towards leading themselves and others.

We aim to bring our participants with us on a profound learning journey to better understand and develop their leadership skills, to help them grow into the value-driven leaders of tomorrow.

## THE NORWEGIAN CHILDREN AND YOUTH COUNCIL (LNU)



The VALE 2023 is financially supported by the Norwegian Children and Youth Council.

They are an umbrella organisation for 102 different Norwegian children and youth organisations. Their member organisations are democratic and voluntary, and they represent a vast diversity of activities and interests.



# THE COURSE EXPLAINED

Welcome to the course!	Preparatory tasks 18 SEP - 9 OCT	The VALE Course 13 - 22 OCT	Virtual Assembly 10 DEC	Life as a Valedictorian
<p>CONFIRMATION OF PARTICIPATION</p> <p>We will let all selected participants know of their selection by 15 AUG and aim to have financial matters settled by 15 SEP 2023.</p>	<p>LAYING THE GROUNDWORK...</p> <p>We will engage participants with mandatory preparatory tasks to reflect on their ideas of leadership and values before the course to kickstart the process.</p> <p>ESTIMATED WORKLOAD: 12 HOURS OVER 3 WEEKS</p>	<p>...TO DIVE IN THE DEEP END</p> <p>We will meet in rural Norway for an intensive and immersive leadership experience that will challenge participants to re-examine the way they see themselves and the world.</p>	<p>FOLLOW-UP PERIOD</p> <p>To reinforce learnings, it's time to experiment: try out newly acquired skills at studies, work, and volunteering commitments. We meet for a virtual assembly 7 weeks after the end of the course on the 10th of December.</p> <p>ESTIMATED WORKLOAD: 25 HOURS OVER 7 WEEKS</p>	<p>THE VALE COURSE IS OVER, LEARNING CONTINUES</p> <p>Participants will inspire members of their community for better leadership while remaining a part of The VALE Alumni Network.</p>

## BE READY FOR A TRANSFORMATIVE JOURNEY TO BECOME MORE

### AWARE

Because, only when we look, explore, and reflect with an open mind, can we question our status quo and begin to notice qualities and aspects ready for change.

### SKILLED

Because, only with the tools to catalyse action and experience to guide our judgement, can we lead capably and allow ourselves to grow beyond our perceived limits.

### VALUE-DRIVEN

Because, only when we know where our inner compass points to, can we inspire others to follow in that direction and, in doing so, lift them up with us.

*"I think... we, as a group, sort of grew together. It's pretty unique to grab 20 people, somewhat unknown to each other, and observe us mature in just 5 weeks. Regardless of where we were on the spectrum of 'adulthood' when we started the course, I think all of us took new steps towards it – some took a step, some took a leap – but a step nonetheless."*

–Participant Evaluation

# PARTICIPANT PROFILE

The target group of The VALE is **young volunteer leaders** representing a youth organisation, such as Youth for Understanding. The course strives to have a diverse applicant pool and to have a balanced group of participants in terms of gender, background, and experience.

## We have set the following selection criteria:

- Aged 20-35 (due to the funding being youth-specific)
- Has previous leadership experience(s), preferably in leading large and diverse groups of people
- Demonstrates a commitment to self-reflection and readiness to take on a challenging journey for self-improvement
- Shows a strong interest in taking on future leadership roles and being a leader of tomorrow
- Ready and able to attend the full duration of the training from 13 to 21 OCTOBER 2023, including completing the preparatory tasks and the follow-up meeting on 10 DECEMBER 2023.
- Has strong motivation, with their newly gained knowledge and skills, to act as multipliers in their local organisation and contexts

*I've only been doing things on my organisation out of habit lately, and I think I found some new insights (or maybe I've remembered old ones) about why I love it so much and that there is more of it than doing the day-to-day stuff that people ask me to do.*

*Very inspiring in terms of future work and I loved how everything tied together to how I interact with others and lead myself in everyday life.*

*With the tools I have now, I would like to improve my own leadership and create a more sustainable and empowering environment within my local organisation's community and inspire my colleagues and our volunteers.*

**–Participant Evaluations**



# FINANCIAL NOTES (1)



The vast majority of the course costs are covered by our funders. In addition however, all participants will contribute to their own participation costs **unless otherwise agreed** with a sponsor organisation such as YFU. Both fees depend on the country of residence because we wanted to help balance the economic disparities between different regions (*see financial notes part 3 for more explanations*).

Some sponsorships might come from your youth organisations, but we urge you to be open-minded regarding other possible sources of sponsorship, such as your work, school, other affiliated organisations and more.

## WHY IS THERE A CONFIRMATION FEE?

Administering registrations comes with costs. The confirmation fee covers these, while also serving as your commitment, helping us to effectively plan and ensure an optimum learning environment for all.

## WHY IS THERE A PARTICIPATION FEE?

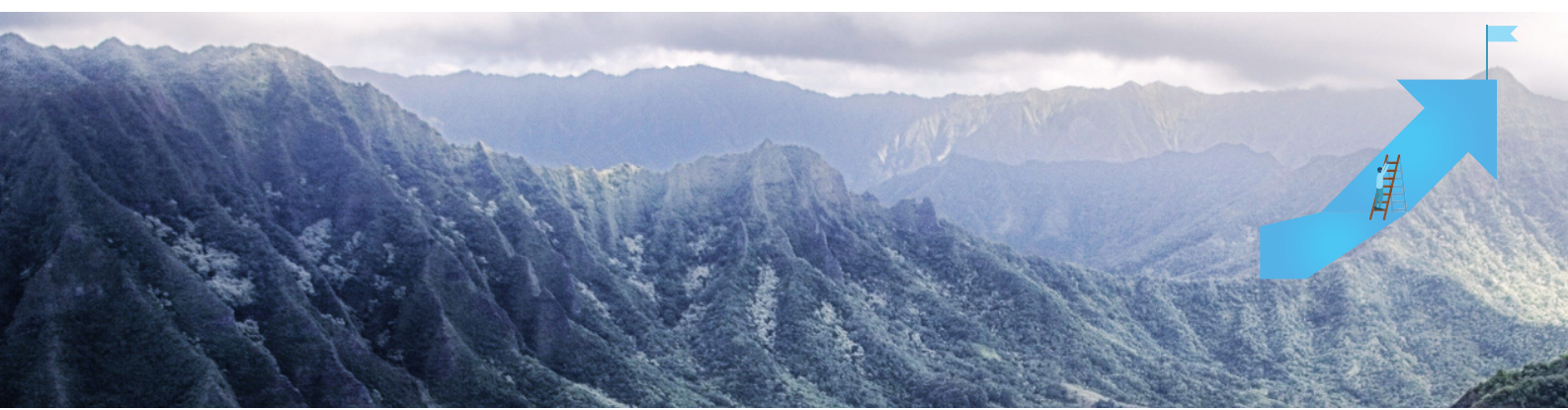
Delivering a high-quality course like ours requires resources. While your fee contributes towards these costs, remember it's only a sliver of the actual value you'll receive. This includes, among other things:

- Accommodation and meals and local travel to the venue
- Quality learning materials
- Experienced and dedicated trainers

We hope you view these not just as fees, but as an investment in your growth as a leader, with returns that will significantly outweigh the cost.

*For me, the best thing about the course was that I have found my inner strength and realized more of my own potential as a leader and as a human being, and I can't think of anything that is cooler than that. The second best thing was seeing the progress and growth of everyone else, especially because we didn't even know each other at all a few weeks ago, but the development was so obvious.*

– Participant Evaluation



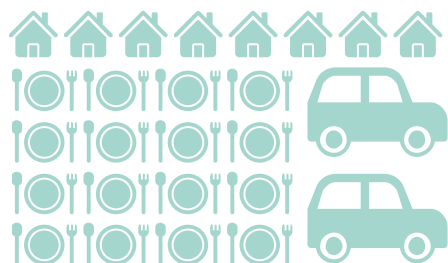
# FINANCIAL NOTES (2): COST BREAKDOWN

## CONFIRMATION FEE



- The course has a confirmation fee, based on your country of residence, calculated based on the Erasmus+ table of daily support allowance ([Link here](#)).
- It will be a one-time payment of the suitable daily allowance times two (x2), therefore a minimum of 66 euros and a maximum of 110 euros.
- You will be asked to pay this fee when confirming your attendance in the course. The fee is non-refundable and goes towards **admin and organising costs**.

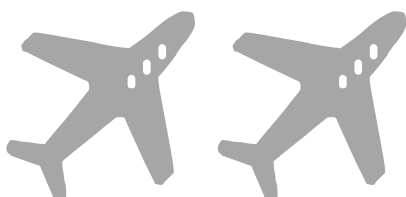
## COURSE FEE



- A one-time payment will go towards costs that are not in full covered by the grant by LNU.
- The amount is determined by your country of residence (see the next page)
- The course fee can be covered by a youth organisation, by yourself, or other sources. If you need financial support to attend, mark it in your application.

## TRAVELS

TO AND FROM OSLO



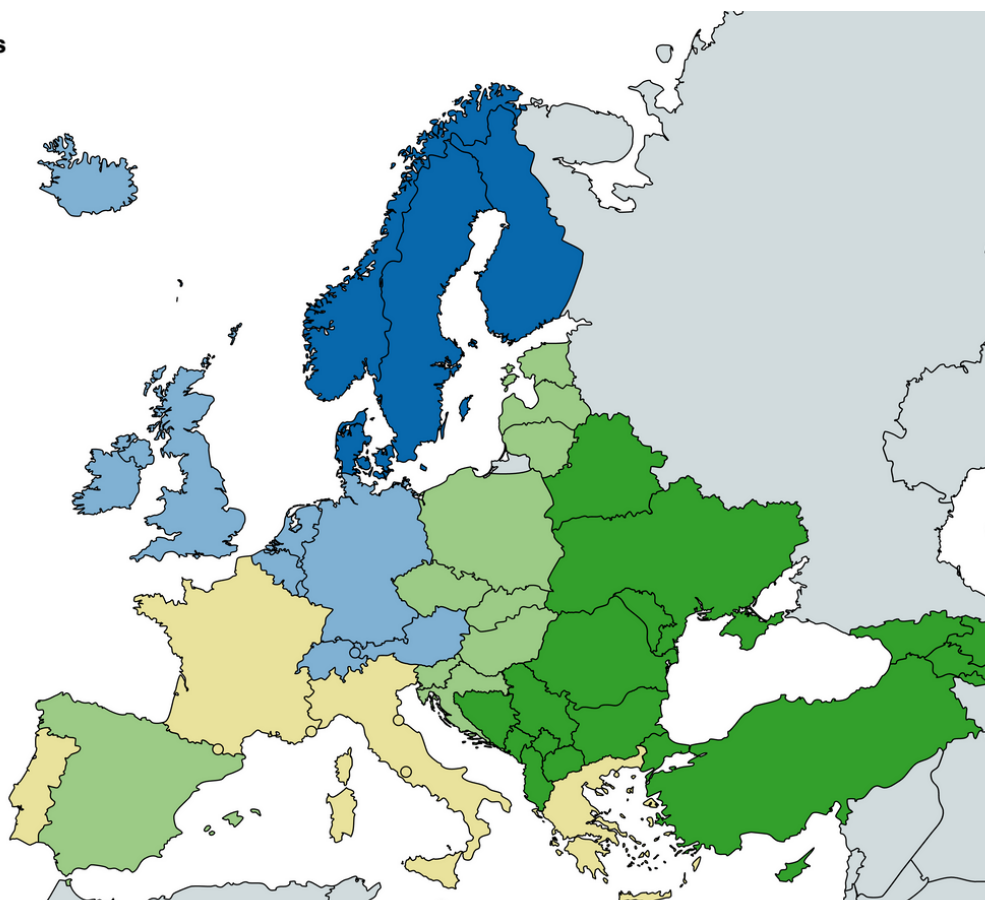
- Participants will arrange and cover their travels to Oslo prior to the on-site training however they wish.
- The programme will begin on Friday 13 October at 16 CET in Oslo city center.
- The programme will end on Saturday 21 October around 14 CET in Oslo (earliest departures should be booked at 16:30 CET).



# FINANCIAL NOTES (3): TOWARDS MORE EQUAL OPPORTUNITY

**Participation fees**

- 250 euros
- 220 euros
- 195 euros
- 180 euros
- 165 euros

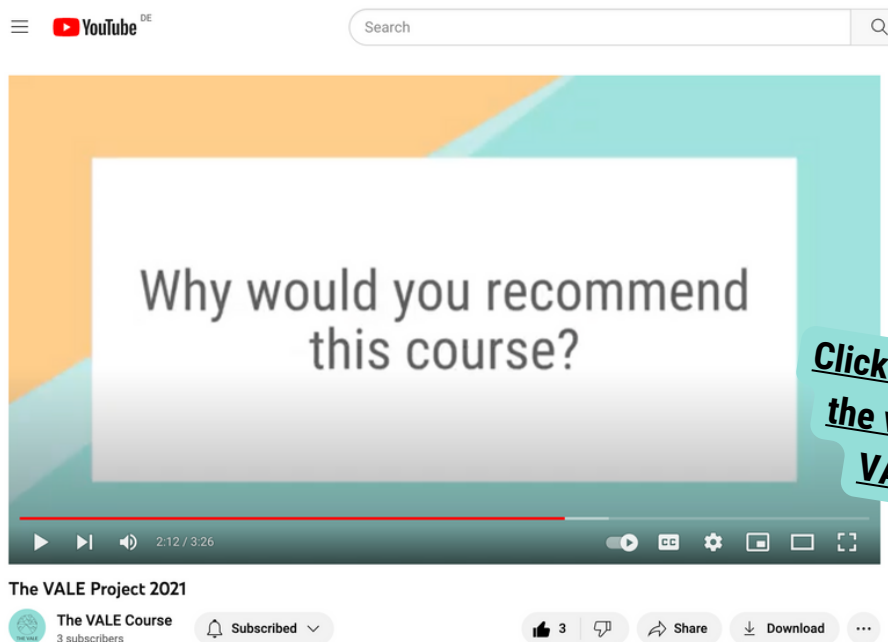


NOT ON THE MAP? PLEASE REACH OUT AND ASK!

MARK IN YOUR APPLICATION IF YOU NEED FINANCIAL SUPPORT TO BE ABLE TO ATTEND

## EXAMPLE CALCULATIONS

	GERMANY	HUNGARY	FINLAND
<b>COURSE FEE</b> SEE THE MAP 	220 €	180 €	250 €
<b>CONFIRMATION FEE</b> ( <a href="#">LINK TO TABLE</a> ) 	92 € (2 X 46 €)	74 € (2 X 37 €)	104 € (2 X 51 €)
<b>TOTAL FEES</b>	<b>312 €</b>	<b>254 €</b>	<b>354 €</b>
<b>+ FLIGHTS</b> 	185 € ? ESTIMATE (FRA)	185 € ? ESTIMATE (BUD)	145 € ? ESTIMATE (HEL)



*At The VALE, we were surrounded by reflection and I learned so many things about the things that are in my life, I have been doing without realising it. The toolbox I gained was incredible and everything in the toolbox were the things that I did not know I needed.*

*It was significant that the whole program was able to find the fine line between pushing our limits and feeling discomfort. I think it was great that the trainers helped us to push our limits with respecting our boundaries.*

*The best thing about the course as a whole was that we were not taught general wisdoms, but we all worked with and on our own personalities. I felt that everything was relevant and carefully planned.*

*We got to know ourselves in small steps, apply the knowledge on ourselves, then put all this into practice: very specific, feasible and realistic actions to improve not only ourselves but also the world around us. This course is an outstanding example of experiential learning.*

*The best thing about the course as a whole is that it is very professional and smart, but also very fun and entertaining. The trainers were the biggest inspiration: seeing how The VALE came to life and experiencing your presence was invaluable!*





If you've read this call all the way here, that's a great sign you should consider applying!

If you're interested in the project, don't hesitate to ask us about it – we'd be delighted to tell you more.

Either shoot us an email, or if you'd rather speak to someone directly, leave us your phone number, and we'll gladly take a call!

We're looking forward to reading your application!

Enthusiastically,  
*The VALE Team*

**APPLICATIONS OPEN  
UNTIL  
7 AUGUST 2023**



**EMAIL:** [contact@thevale.eu](mailto:contact@thevale.eu)  
**WEBSITE:** [WWW.THEVALE.EU](http://WWW.THEVALE.EU)

You can reach us at [contact@thevale.eu](mailto:contact@thevale.eu)  
Please don't hesitate to reach out!



**TRINE  
TAMM**  
ESTONIA



**TULLE  
MOURIDSEN**  
DENMARK



**RIIKKA  
PASANEN**  
FINLAND



**ERIK  
SUNDBERG**  
SWEDEN

### The VALE (Value-based Advanced Leadership) Course Application

Hello again,

Before you start filling in the application, we just want to tell you how glad we are that you have decided to apply for The VALE Course and join us in this thrilling adventure! This course has been in the works for quite a while now, so naturally, we are extremely excited about you pressing the "Send" button! We are eager to embark on this journey together with you, so take your time to reflect on your motivation and filling in the form.

Warm wishes,  
The VALE Team

**CLICK HERE**  
**TO APPLY**

The applicants' personal data will be processed in accordance with our privacy policy:  
<https://thevale.eu/contact/privacypolicy/>



**YOUTH FOR UNDERSTANDING**  
make the world your home



**THE VALE**