

# STAGECRAFT

*For youth workers*

16TH-23RD MARCH 2022  
MOFFAT, SCOTLAND, UK

**ERASMUS+ TRAINING COURSE  
KA1 MOBILITY OF YOUTH WORKERS**



## INFORMATION PACK



In this pack is information about the course, it's objectives, the venue, the training team, project partners, participating countries, travel, costs, reimbursement, and more! To go straight to the application: [SALTO LINK!](#)



Co-funded by the  
Erasmus+ Programme  
of the European Union

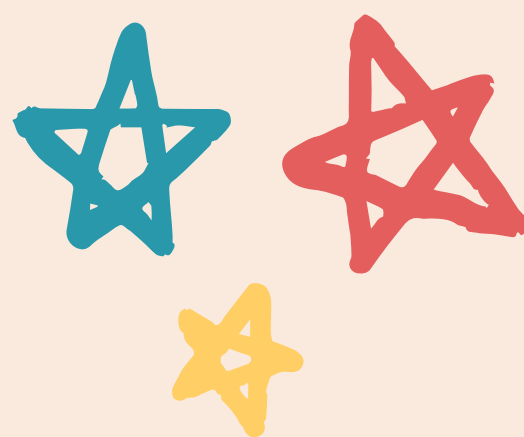
# PROJECT SUMMARY

"StageCraft for Youth Workers" is the 3rd edition, funded by the Erasmus+ programme and promoted by the UK NGO Coyote Initiatives. The project is a 7-day residential training for youth workers, social workers and educators, using approaches including theatre, comedy, storytelling, psychology, sociology, education, music, social & creative community work. The training format is based on non-formal education techniques, and utilises advanced communication, presentation and facilitation skills development.

The project will take place in Scotland, UK, in the town of Moffat, which is 50 miles south of Edinburgh. The venue is The Well Road Centre, a large Victorian building which was once a boarding school, and now hosts trainings, events, youth groups and other events. The training runs from the 16th – 23rd March 2022. The 16th is a travel day, and also the first day, with the course starting at 5pm. It will involve 24 participants and 4 trainers from 8 different European countries (Italy, Czech Republic, Hungary, Estonia, Slovakia, Slovenia, Turkey and United Kingdom).

The course seeks to develop what we think of as advanced skills – sometimes neglected - of being able to use the environment, our physiology, our body language and the content of our message to make our youth work even more effective. We will draw from applied psychology and from skills-sets used in theatre by professional presenters and comedians, to make the training diverse and exciting. Participants will have opportunities to reflect on the fact that as well as expensive and ubiquitous technology - there are many other resources and skills we can use to keep young people engaged and develop effective relationships with them.

Our course will be highly interactive, we will apply each methodology on the spot and participants will have many chances to challenge themselves in and out of their comfort zones to develop new awareness and skills. Be prepared for some real Stagecraft thrills!



## CONTACTS



**PROJECT COORDINATOR**

**Steven Gasgarth**

[stagecraftuk2022@gmail.com](mailto:stagecraftuk2022@gmail.com)

[www.coyoteinitiatives.com](http://www.coyoteinitiatives.com)



# COURSE AIM

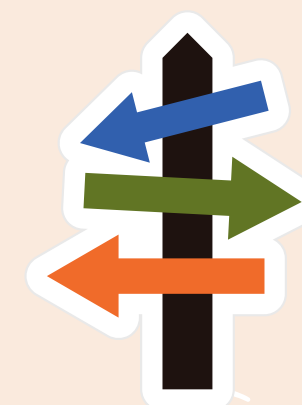
---

The main aim is to develop awareness and understanding of advanced presentation, communication and engagement skills, based on youth work principles and practice; and to explore how these competences can be applied in an Erasmus+ context.

The training will be realised using a range of experiential learning opportunities, non-formal educational approaches and a wealth of youth work theory and practice to actively engage and develop the skills of the participants.

# OBJECTIVES

---



\* To develop awareness and build on a greater understanding of the presentation, communication and engagement skills and experiences of youth workers

\* To explore and understand the effects of effective presentation and engagement with an audience of young people and in the role of youth worker \*

\* To identify and realise the opportunities to put the skills developed into practice

To gain a greater awareness of the theory and practices behind "Stagecraft" taken from the fields of psychology, sociology, education, theatre and creative community (comedy, music and drama)

\* To explore the opportunities for realising their youth work potential through Erasmus+ and develop future collaborations

# PARTICIPATION & DISSEMINATION

---

By applying to this course, participants commit themselves to actively participate in the whole process, including:

- to read all the information carefully
- to communicate timely with the organisers
- to prepare adequately for the training course
- to take actively part in the full duration of the activities
- to participate in the evaluation process after the course



Dissemination is a crucial area of the E+ project lifecycle. It gives the opportunity to communicate and share outcomes, thus extending the impact of a project. Sharing results, lessons learned, outcomes and findings will enable a wider community to benefit from a work that has received EU funding. You will be encouraged and required to actively take part in the dissemination of the project during and after the course. We will offer you tips and space for coming up with ideas and planning.

# TEAM OF TRAINERS



**BUZZ BURY**  
(UNITED KINGDOM)

<https://www.buzzbury.co.uk/>



**CARMINE RODI FALANGA**  
(ITALY / CZECH REPUBLIC)

<http://trainers.salto-youth.net/CarmineRodi/>



**MAFALDA MORGANTI**  
(ITALY)

<http://trainers.salto-youth.net/MafaldaMorganti/>



**STEVEN BURNS**  
(UNITED KINGDOM)

[www.thinkforwardcic.co.uk](http://www.thinkforwardcic.co.uk)

# PARTNER ORGANISATIONS

**Coyote Initiatives** (UK) - Host  
[coyoteinitiatives.com](http://coyoteinitiatives.com)

**Muovimento Societa Cooperativa Sociale** (Italy) [muovimento.it/en](http://muovimento.it/en)

**Vice Versa** (Czechia)  
[viceversa.cz](http://viceversa.cz)

**Yaygin Egitim Merkezil Dernegi**  
(Turkey) [yegitim.org.tr](http://yegitim.org.tr)

**EduEra** (Slovakia)  
[eduera.sk/en](http://eduera.sk/en)

**Zavod Voluntariat** (Slovenia)  
[zavod-voluntariat.si/en](http://zavod-voluntariat.si/en)

**TIA** (Hungary)  
[tudatosifjusag.hu](http://tudatosifjusag.hu)

**MTU Link** (Estonia)



# ACCOMMODATION

---

The training course will take place in Moffat, a small town 50 miles south of Edinburgh. The venue is The Well Road Centre ([www.wellroadcentre.com](http://www.wellroadcentre.com)). The accommodation will be in shared rooms of between 4 and 10 people. Showers and toilets are shared. Linen will be provided, **but you must bring your own towel**. The course is residential, so we will stay together in the venue for the whole time. Our group will be responsible for living together during the course. This is a normal part of our educational approach and encourages community spirit, responsibility and sharing. Everyday tasks will be shared by participants, as part of the community living experience.

Arrivals will be between 11am and 4.30pm on the 16th of March, with registration taking place until 4:30 PM . The programme will start at 5 PM sharp. The end of the course is scheduled on the 22nd of March with a farewell party, so that all of us will leave on March 23rd after breakfast. Our programme includes half a day free and we will provide information about the local area. No trip will be organised to visit Edinburgh. If you want to organise yourself and take a few days extra for your own leisure time, this is possible. You can take 2 days before OR after the course for your own plans (2 days in total), and still be eligible for a travel reimbursement. We cannot reimburse travel outside of this limitation. Any accommodation costs for those extra days will be fully up to the single participants.

We will give more detailed information about travel, reimbursement etc once you have a place on the course.



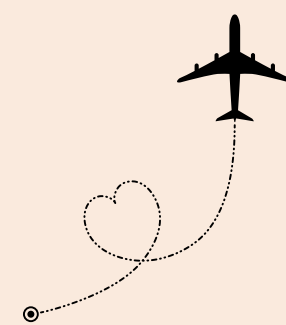
**WE ARE VERY SORRY TO SAY THAT THE VENUE IS NOT ACCESSIBLE.**

There is no elevator, and all accommodation is on the 1st and 2nd floors, accessed only by stairs. We were unable to secure an accessible venue, and we apologise for this.

ATTENDANCE FOR THE WHOLE COURSE - FROM THE 16th - 22nd MARCH - IS ONE OF THE BASIC CONDITIONS FOR PARTICIPATION, SO PLEASE ARRANGE YOUR TRAVEL TO BE THERE ON TIME. IN CASE OF ANY COMPLICATIONS, PLEASE LET US KNOW AS SOON AS POSSIBLE.

# TRAVEL REIMBURSEMENT

---



The course is co-funded through the Erasmus+ European programme. We can reimburse only the cheapest transportation possible and only public transport, and only standard or 2nd class fares. We cannot reimburse any Taxis or Private Cars.

For the reimbursements, we will need:

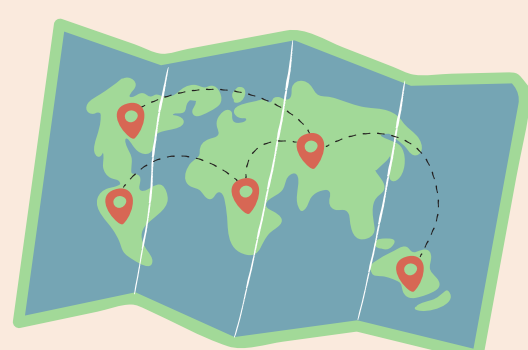
1. An invoice with the **itinerary** of your trip including the **names of the passengers** and, very important, the **price of the ticket**. Usually all this information is available on the e-tickets for flights or on the confirmation email.
2. All your original travel tickets and receipts (**train and bus tickets**) which you wish to have reimbursed. We cannot provide reimbursement without the **original documents**, so it will be your responsibility to take good care of them.
3. All boarding passes. This can be original printed boarding passes, or any mobile passes, printed out.
4. All exchange rates for the project are set by Erasmus+ and any calculations to Euros will follow the official set project rates.

The following list is the maximum allowed per person for a full return (2-way) journey, and we will not refund more than this.

---

**HUNGARY, SLOVAKIA, ITALY,  
CZECH REPUBLIC, ESTONIA, SLOVENIA: €275  
TURKEY: €530  
UK: €180**

---



## **IMPORTANT:**

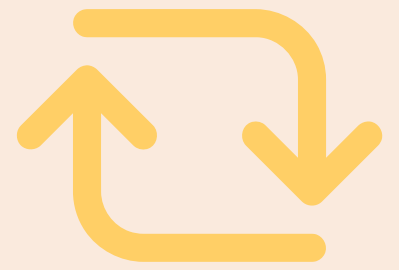
In terms of where you are from, for the purposes of qualifying for this programme, it is where you live, not where you are from. Your country of residence, not your nationality.

For example, we can accept a person living in Italy, as long as they travel from, and return to Italy, no matter what nationality is shown on your passports. Please, don't ask for exceptions ("I'm originally from Italy, but now I live in Belgium - can I travel from there?") as these are the rules set by Erasmus+ and unfortunately we cannot change them!

The reimbursement will be done after the end of the project, after we successfully get all the tickets and boarding passes from you - including any return passes, tickets etc. We will make the transfers once we have all the tickets from everyone, and no later than 6 weeks after the course has finished. Instructions and forms will be provided during the training course.

# COURSE FEE

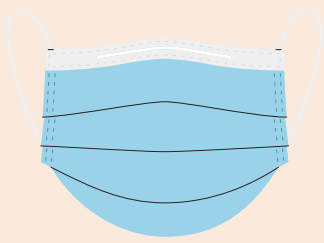
---



The Erasmus+ funding does not fully cover the course. We work with the venue, training team, project coordinator and ourselves to provide subsidised rates for this course. This, along with your contribution of the above fees, and the time and effort put in by our partner organisations for free, allow this course to take place and all act as co-funding of this project.

A non-refundable bond of £30 is to be paid by bank transfer once you are selected for the course. This is not refundable, unless we cancel the course.

A participation fee of £20-£90, to be paid in cash during the course, based upon your own, and your organisation's situation. Please contact us for further information if this is a barrier.



# COVID-19

---

The U.K. national agency will not refund any costs due to Covid, including all flights and travel costs. Please fully insure your own travel as we will not be able to reimburse any missed flights for any reason.

We will run our course in line with the current guidelines in Scotland. More information will be shared before the course start date. It is your responsibility to ensure you meet the requirements to travel and enter Scotland and the UK.

If the entire course has to be cancelled due to Covid restrictions, we will seek to re-organise the course at a later date or investigate an online option. We hope this will not happen!

# IMPORTANT INFORMATION

---



It is the participant's responsibility to obtain full insurance for themselves.  
This includes travel insurance, medical insurance.

Any pictures, videos, images taken at the course, as well as the materials produced during the activities, can be used to document the activity in reports, on websites or social networks, or for promotional material.

The course will include light outdoor activities Please pack clothes which also suitable for outdoor activities.

Internet is available at the venue, but the quality is very bad, so we ask that you organise your own mobile wifi / phone wifi for your time at the venue, as we cannot guarantee wifi signal.

We will ask you to provide any dietary requirements and mobility requirements prior to the course. This does not remove the participant's personal responsibility for ensuring their own health and safety.  
**The Venue is not an accessible venue. We are very sorry about this, and apologise unreservedly.**

Pack your own phone & laptop chargers, and ravel adaptors according to the local standards.

You will need to provide your own Towel and personal toiletries etc.



**APPLY HERE**

---

<http://trainings.salto-youth.net/9861>



Co-funded by the  
Erasmus+ Programme  
of the European Union