



EDUCATIONAL
CENTER
KRUSEVAC

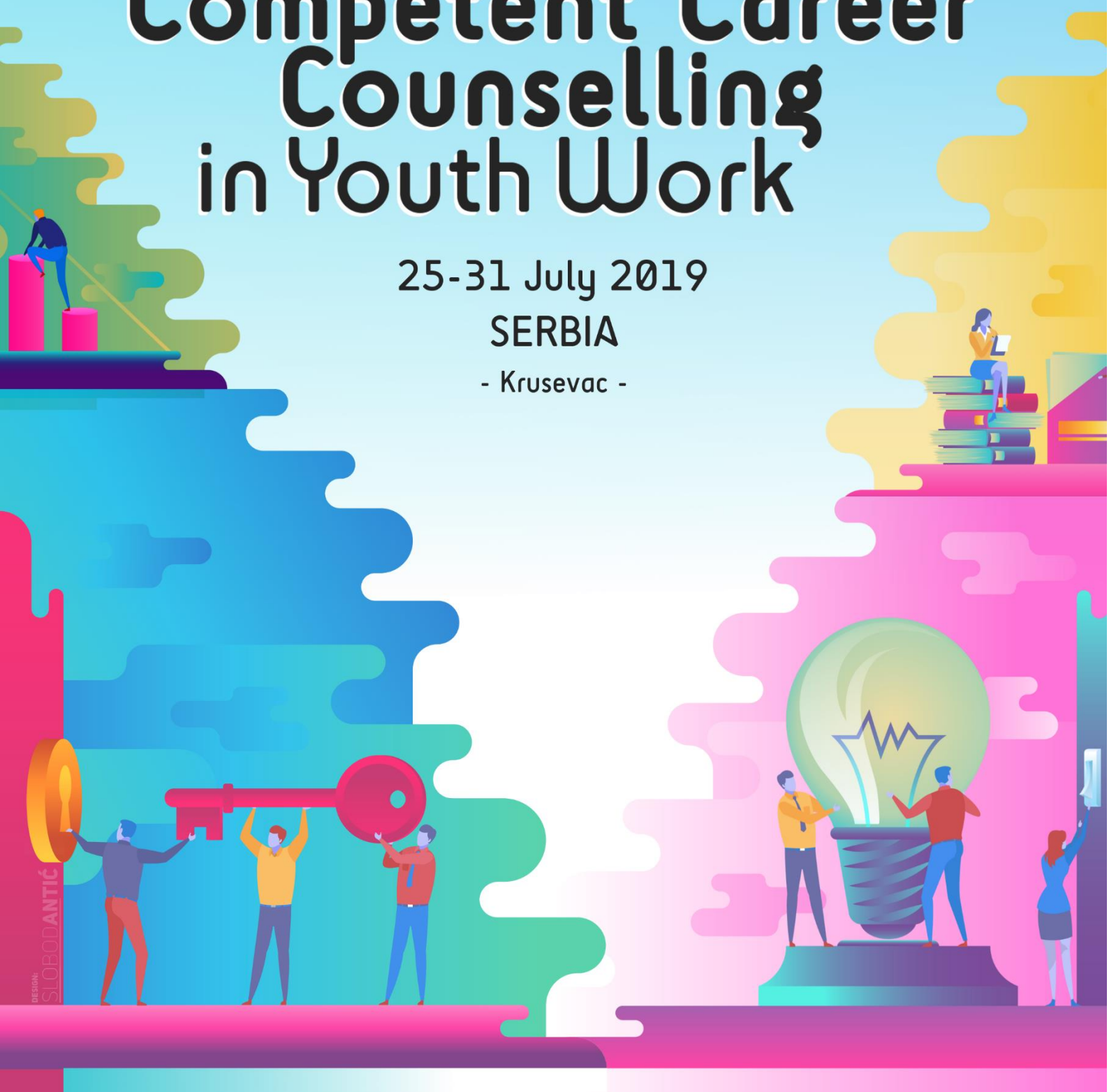
Mobility of Youth Workers
TRAINING COURSE

Competent Career Counselling in Youth Work

25-31 July 2019

SERBIA

- Krusevac -



Co-funded by the
Erasmus+ Programme
of the European Union



JUGEND
für Europa

Nationale Agentur Erasmus+

WHO WE ARE?



Coordinating organisation

"Lucky Punch Jugendhilfe" is a non-profit free youth welfare, who is providing help and support of young people and their families in difficult life prescribed. As we are a young, innovative and open-minded carrier, we seek always new challenges and expand our concept within the youth services steadily, to reach a solution-oriented, resource-based and holistic approach on what young people can. Through a multidisciplinary approach of our team a multifaceted perspective on the individual need for assistance is possible.

The compliance with accepted professional standards distinguishes the high quality of our work. Regular advanced training courses here are a crucial component. Moreover, it is of course adequate for us, transparent and efficient use of the available resources.

By continuously changing the conditions of our society is subject to constant change. Norms and values have become fickle contemporaries and more stimuli to flow upon us. Top priority of our work is fundamental and universal view of the person who takes into account in addition to the individuality of each and its social environment. Characterized by a humanistic worldview, we explain the experience, behaviour and actions of individuals judgmental light of experience, which have helped that each person has won a world view and outlook on life. Self-determination is here an absolute size. Everyone has the right to find its own way through the various stages and processes that just brings growing up with it, and to be supported by acceptance and appreciation.

Hence our approach derives. By cornerstone empathy, appreciation and congruency we understand man in his individuality and see crises and conflicts, which brings every life with him as a motivation for change to. As the Chinese character for the word "crisis" simultaneously "chance" means difficult life are not a deterrent for us. We know that by friction energy is created that properly channelled, much force for change has and can make individuals stronger from a situation emerge.

Host organisation



"Educational centre Krusevac - ECK" is founded in the July 2000., and registered in May 2001., as non-government, non-political and non-profit organization The Mission of ECK is promotion and development of civil society, trough lifelong non formal education and support to active engagement.

ECK is aimed at two areas of priorities:

- The implementation of life long non formal citizen education in the field of democracy, civil society, human rights, the respect of differences and culture of peace and non violence
- The support of active youth participation in social life of the community.

Educational centre is mainly intended for the youth. Our goal is to guarantee creative and quality time for youth to spend, by projects in the following themes: non-formal education and training, creative workshops, international youth projects, voluntary work, etc.

ECK through its activities is aimed at two areas of priorities:

- Implementation of lifelong non-formal citizen education in the field of democracy, civil society, human rights, the respect of differences, the culture of peace and non- violence.
- Support of active participation of youth in social life of the community.

ECK activities in work with youth are primarily aimed at empowering youth to be active in their community through non-formal education, networking, advocacy and approaching European initiatives.

ABOUT THE PROJECT

In today's 21st century that is considered as an innovative and knowledgeable era, young people must possess various personal and professional skills to meet the dynamic needs of labour market. Nowadays employment landscape is evolving rapidly and because of that having knowledge and skills for the future job opportunities is increasingly significant for the young people to have effective access and to choose their future education and career.

Employment is an existential basis upon which people build their identity and social security and young people especially those with fewer opportunities face different challenges when trying to access employment. Unemployed people have limited access to income, working resources, social, health, educational and cultural services associated with malnutrition, social exclusion and poverty. To avoid all these problems, it is vital for those young people who have the capacity, potential, talent and ideas to strengthen their competences by transferring knowledge, skills, attitudes and successful practices from the youth workers to them which will give them motivation and show them many ways for success in this cruel and challenging world of fast changes. These days, young people rarely are able to research and find summarized data by themselves for what kind of quality education and jobs are needed for the future labour market and youth organizations either don't have enough capacities with which they can help the young people choose the education and jobs with which they will be happy and have enough financial substitution in it.

This is the reason why many organizations started using the career counseling approach as one of the most successful to help young people integrate to the job market and prevent them become part of the NEET group. Therefore, this project will enable us to share experiences, knowledge, methods, approaches and tools for career counseling and guidance. Analysis and reports related to what is likely to happen in the future job market will be presented. In accordance with that, youth workers will be informed what kind of job opportunities and skills will be demanded and will be easier for them to present, coach and mentor the young people for better education and career choices.

The main aim of this project is to improve the competences of the youth workers about future jobs and qualifications to empower young people in making successful education and career choices.

Based on the above aim, the objectives are as follows:

- Improving competences of the youth workers to make successful career counseling and guidance of young people
- Introducing the future job trends and requirements.
- Presenting the youth workers education opportunities that are in correlation with the future job trends and requirements.
- Equipping youth workers with relevant competencies (knowledge, skills and attitudes) and capabilities (social, organizational and personal) for the future.
- Providing youth workers with tools, methods and approaches for working with youth in area of career and vocational counseling and guidance.
- Improving the networking and cooperation among youth organisations
- Improving the knowledge and skills of the youth workers for project cycle management.
- Improving the skill for planning and designing projects.
- Promoting Erasmus+ programme and similar opportunities as a tool for mutual learning and cooperation among youth workers and young people.

PARTNERS AND PARTICIPANTS

Partners:

- Lucky Punch Jugendhilfe- Germany
- CED- North Macedonia
- ECK- Serbia
- Zenobia- Sweden
- SOS Europa- Italy
- INTER COLLEGE APS- Denmark
- SIRIUS- Croatia
- Kreatif Dusunce- Turkey
- SAL FUERA- Spain



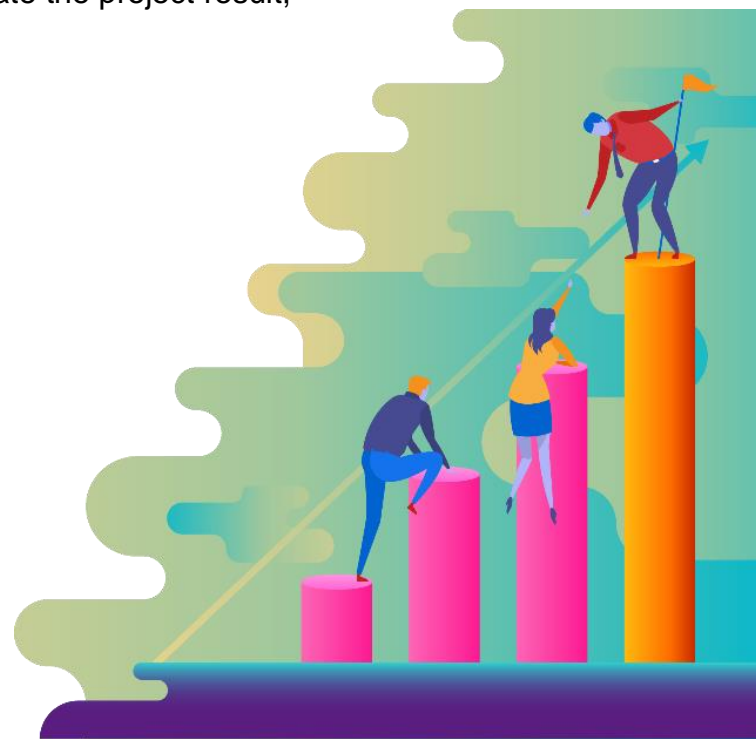
We are looking for **youth workers** that are:

- working with young people on a daily basis,
- have basic knowledge of facilitation of non- formal learning processes
- have support from their organisations in applying their competencies
- wish to develop professionally and personally;
- over 18, speak fluently English and are willing to be an active participant for the entire duration of the training;
- motivated, open-minded, willing to cooperate and share from experience;
- possess knowledge, experience and tools from previous work or projects about intercultural communication; and
- open to reflect on their experiences related to the topic;
- desire to explore new ideas and promote career counselling and guidance among the young people they work with;
- motivated and have capacity for networking and planning new projects
- motivated and have capacity to disseminate the project result;

HOW TO APPLY?

Fill the application form here:

https://docs.google.com/forms/d/13eePoBRNVzB2YdsH5GfOTV9A-0JF5ImGkL6Xi0_zNXY/edit



VENUE

Guest House Dabi, Krusevac, Serbia

The participants will be accommodated in double or triple rooms.

The hotel is 1.4 km far from the city centre, has fast Wi-Fi, bar, billiard and shared lounge

Regarding food: breakfast, lunch, dinner and 2 coffee breaks will be served at the hotel.



Location:

Krusevac, Serbia (for more information please visit: <http://www.turizamkrusevac.com/en/>).



BUDGET

There is no participation fee. Food, accommodation and local travel costs (only during the activity program) will be covered by the grant from the German National Agency of the Erasmus+ Programme.

Reimbursement

According to the rules of the Swedish National Agency, travel reimbursements can only be made by bank transfer to the Partner Organization and based on real costs. The bank transfer will be executed after

- receiving all of the original documents (receipts, invoices, boarding passes and reimbursement claim) by post,
- filling the form generated by the National Agency online evaluation through the Mobility Tool by the group leaders,
- dissemination of results.

up to the budget limit set by the Erasmus+ Programme.

NR.	ORGANIZATION	COUNTRY	NUMBER OF PARTICIPANTS	TRAVEL REIMBURSEMENT
1	Lucky Punch Jugendhilfe	Germany	5	275 €
2	Center for Education and Development- CED	North Macedonia	3	180€
3	ECK	Serbia	3	/
4	Zenobia	Sweden	3	275 €
5	SOS Europa	Italy	4	275 €
6	INTER COLLEGE APS	Denmark	2	275 €
7	SIRIUS	Croatia	3	275 €
8	Kreatif Dusunce	Turkey	3	275 €
9	SAL FUERA	Spain	3	275 €

Rules for reimbursement:

1. Only the cheapest means of transportation will be accepted between the country of the Partner Organization and the venue. Before purchasing anything, please, send your travel plan to vlade-tearce@hotmail.com for confirmation. Participants will be reimbursed on the basis of the least expensive route, based on real costs (we can only reimburse tickets which price you can prove with invoices). Please keep in mind that we do not accept invoices of taxis or from travel agencies.

2. Only uninterrupted travel expenses incurred within the activity start and end dates can be accepted for reimbursement. If you wish to stay in Skopje or at the venue longer and you find tickets for the same or lower value with those on the actual travel dates, then you can travel one day prior, or one day after the training course as well. However, if participants decide to arrive earlier or stay longer (up to 2 days), all costs related to that will be supported by the participants themselves.

3. The reimbursement will be done via bank transfer to the partner organizations after the receipt of all travel documents including boarding passes by regular post. The bank transfers costs cannot be covered by the project.

4. In order to avoid unnecessary stress and problems (e.g. loss of documents by the post)

please send us scanned copies of all documents by email to vlade-tearce@hotmail.com before sending those by post. Please note, that no flight tickets will be reimbursed if the original or electronic invoice is not provided as well.

5. All expenses must be converted to euros using the official exchange rate of the European Central Bank (ECB) on the date when the expense was paid. Link to ECB:

<http://www.ecb.europa.eu/stats/exchange/eurofxref/html/index.en.html>

6. In case the participant(s) fail(s) to engage in the activity's daily program due to late arrival or early departure and not attending 100% of the sessions, the amount granted per participant per day will be deducted from the travel reimbursement. The maximum limit to be reimbursed for each participant is highlighted above and was calculated by the distance calculator of the European Commission.

7. Costs of insurance are not eligible and will not be reimbursed! This means that each participant must support his/her own insurance that covers: travel insurance (including damage or loss of luggage) wherever relevant; accident and serious illness (including permanent or temporary incapacity), as defined in the ERASMUS+ Programme Guide.

Thanks a lot for keeping in mind all of these!

Contact with any questions:

Vladimir Gjorgjevski

vlade-tearce@hotmail.com

