

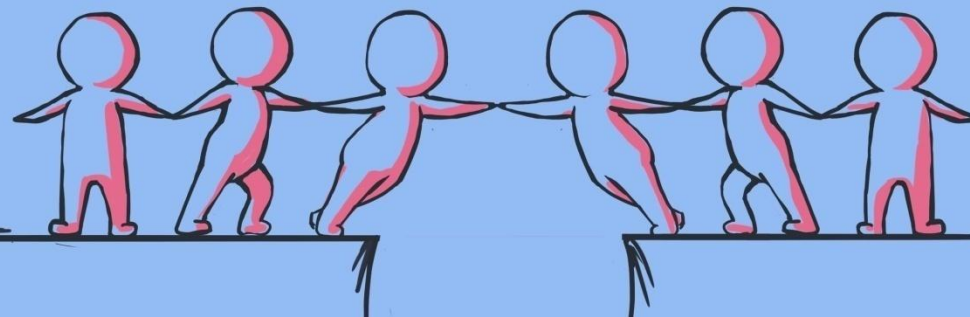
Another Peace

Training Course
July 9 - 18, 2018
Luxembourg, Luxembourg



CONTENT

<u>CONTENT.....</u>	<u>2</u>
<u>PROJECT DESCRIPTION.....</u>	<u>3</u>
<u>COUNTRIES INVOLVED.....</u>	<u>4</u>
<u>OBJECTIVES OF THE TRAINING COURSE.....</u>	<u>4</u>
<u>WORKING LANGUAGE.....</u>	<u>5</u>
<u>PROFILE OF PARTICIPANTS.....</u>	<u>5</u>
<u>ACCOMMODATION.....</u>	<u>6</u>
<u>ACCESS / PUBLIC TRANSPORT.....</u>	<u>8</u>
<u>TRAVEL COSTS AND REIMBURSEMENTS.....</u>	<u>10</u>
<u>FOOD AND SPECIAL NEEDS.....</u>	<u>10</u>
<u>WHAT TO BRING WITH YOU.....</u>	<u>13</u>
<u>INTERCULTURAL EVENING.....</u>	<u>14</u>
<u>PARTICIPATION IN THE TRAINING COURSE.....</u>	<u>14</u>



PROJECT DESCRIPTION

Over the Europe there have been numerous efforts towards the prevention of conflict, which undoubtedly destroys the existing peace. Over the past 45 years, especially on political level important work has been done aimed at the promotion of peace. During these years it became obvious that the escalation of global conflict is rooted in diversity, which may be looked at in terms of economics, culture, politics, ethnicity, nationality, religion and gender among others. It is because of this diversity that there is a tendency for members of one group not to tolerate the views and actions of others. This leads to a fight for dominance, the result of which is conflict and the breakdown of peace. In the current world of conflicts and global migrations, young people are particularly

vulnerable to instability and aggression. Within the global context of an increased international acknowledgment of the importance of conflict prevention and peace building the EC has significantly increased its focus on conflict prevention and peace building. The EU considerably strengthened its policy framework in the field of conflict prevention and peace building and developed a wide range of financial and non -financial instruments to intervene in conflict affected countries, ranging from

"classic" long -term geographical assistance, to specific short -term instruments and a wide range of non-financial instruments such as political dialogue, high -level mediation, deployment of EU observers and civic education for young people. Peace-building is also often associated with society building, which is usually a case for post USSR countries and societies in transition. Society-building has become a necessity in many post-Soviet states in the early 1990s, after the collapse of USSR. A bottom-up peace-building approach, also known as "indigenous empowerment", is a comprehensive

tool that aims to empower local population at the bottom and mid-levels of society by allowing them to consolidate and develop necessary resources for the implementation of a peace process.



This project consists of a Training Course in Luxembourg
and a Study Visit in Armenia

This infopack is for the Training Course in Luxembourg

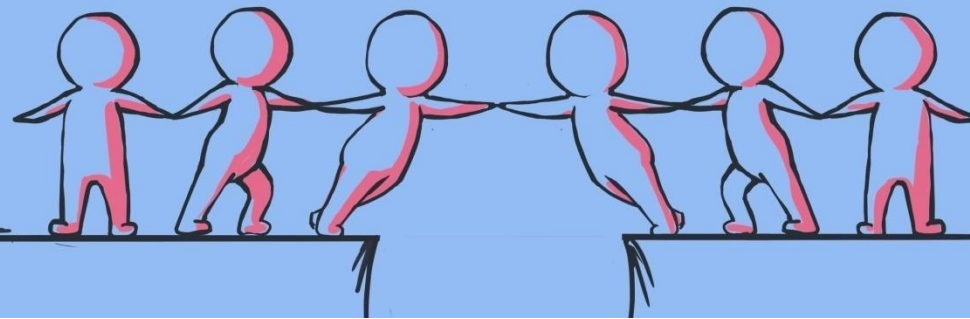
More info about SV: <https://goo.gl/pQgqMk>

COUNTRIES INVOLVED:

Luxembourg, Georgia, Ukraine, Portugal, Russian Federation,
Poland, Armenia, Greece, Lithuania, Hungary

OBJECTIVES OF THE TRAINING COURSE:

- To develop competences of the participants in human rights promotion and protection, conflict transformation, peace building and intercultural dialogue.
- To promote the presence and the role of young people as positive actors of change in peace-building processes;
- To strengthen the role of young people and youth NGOs in identifying and speaking up against human rights violations, including discrimination, hate speech and those human rights violations affecting especially young people and children;
- To support the field presence of the European Commission in order to promote the values behind the institution;
- To develop competences of youth workers and youth leaders related to peace building.



PROFILE OF PARTICIPANTS:

The participants will be youth workers, members of the initiative and non formal groups with extensive experience necessary for acting as multipliers, that meet the following criteria:

- Aged 20 or above.
- English speaking and developed communication skills;
- Committed to attend the full duration of the preparation to the course, the course itself and act as multiplier for the knowledge and competences developed during the course;
- The need to improve skills and competences relating to the topic of the project;
- Willingness to cooperate and develop future projects in Erasmus+;
- The role/ involvement with Youth Work and the sending organization.

In general, as the project aims to support the development of skills and competences to improve youth work, the project intends to involve all actors that are working in the educational sector and other sectors involving

WORKING LANGUAGE: English

The project was organized by Foreign Students of Luxembourg with a financial support of

Erasmus+ Programme granted by **Luxembourgish National Agency - Anefore**



ACCOMMODATION:

Chalet "d'Géisserei" in Luxembourg-City

5 rue Munchen-Tesch, L-2173 Luxemburg, Tel.:+352 269484

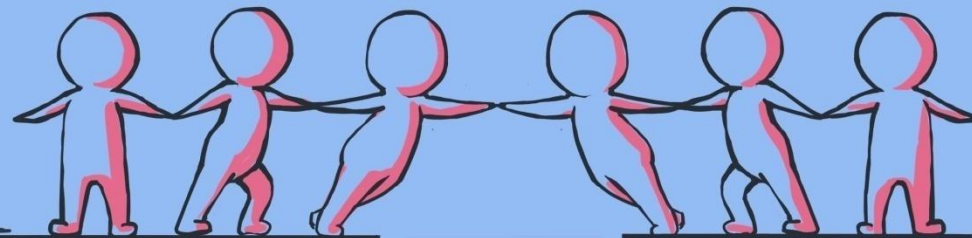
The chalet is located on the grounds of a former foundry in Luxembourg-Eich. It is managed by the Foundation Guides and Scouts of Luxembourg. The building was completely renovated in 2007 and houses the chalet "d'Géisserei" as well as the headquarters of the Guides and Scouts of Luxembourg (LGS).

The chalet is located near the "place Dargent" from where it is a short way to the centre of Luxembourg-City. (30 min. walk to the city center)

A modern interior offers all necessary amenities, and is suited for disabled people (wheelchair access, elevator, adapted toilets and showers). The Chalet has WiFi coverage, and participants will have special password to enter the building.

All beds have fitted sheets, pillowcases and mattress covers; blankets are not available. (Sleeping bags will be provided by organizers).

Basic food can be purchased in nearby stores (rue A. Laval / place Dargent / rue de Muhlenbach).



VENUE: Luxembourg city, Luxembourg

Luxembourg City is the capital of the Grand Duchy of Luxembourg; it is located in the heart of Europe, bordered by Germany, France and Belgium were you can drive 3 hours from Luxembourg City to be in Frankfurt, Brussels, and Paris.

The capital, Luxembourg City, is, together with Brussels and Strasbourg, one of the three official capitals of the European Union and the seat of the European Court of Justice, the highest juridical authority in the EU, many European institutions are based in Luxembourg like the European Investment Bank, Secretariat of the European Parliament and many more, as Luxembourg was a founding member of many European Institutions; and to know that the word (Schengen) that is used for the visas is one of the cities in Luxembourg where the treaty was signed.

Its culture, people and languages are highly intertwined with its neighbors, making it essentially a mixture of French and Germanic cultures. The repeated invasions by its neighbor countries, especially in World War II, resulted in the country's strong will for mediation between France and Germany and led to the foundation of the European Union.

Luxembourg has 3 official languages: Luxembourgish, French and German. English and Portuguese are widely spoken in Luxembourg due to the variety of the European Institutions and international private firms which is located in Luxembourg in addition to the demographic structure of the population.

The population of Luxembourg state is over 500 thousand inhabitants where around 100 thousands live in Luxembourg City, in addition to estimated 150 thousands who come on week days to work in Luxembourg while living in the neighboring countries.

Luxembourg is well connected and there are widely open WiFi networks available in the city. Currency is Euro, public transportation cost: 2 Euros for 2 hours, 4 Euros daily ticket for all over Luxembourg.



ACCESS / PUBLIC TRANSPORT:

Station name in front of the training venue: **Weimerskirch, Lavals park**
or another one close to it: **Eich, Eecher Plaz**

From Airport

Number 16 till Kirchberg Antoine de St Exupery

Then

Number 8 till Weimerskirch, Lavals park

or

From Airport

Number 16 or 29 till **Luxembourg, Gare Centrale**

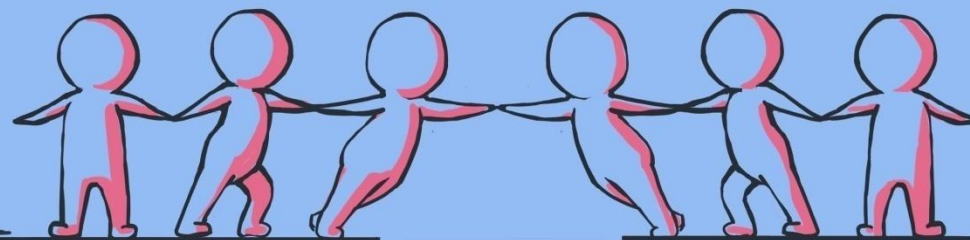
Then

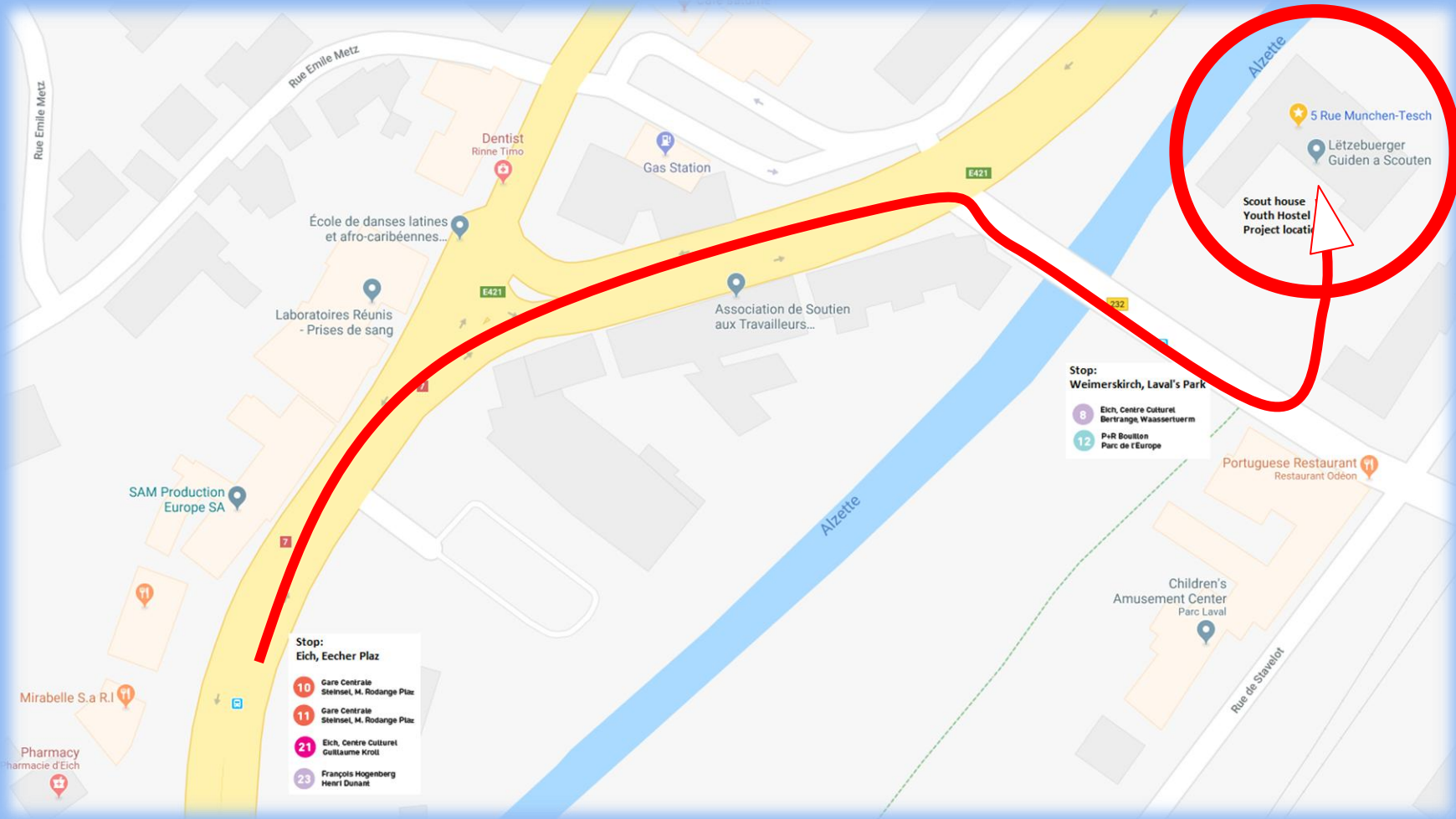
Number: 10, 11, 21, 23 till Eich, Eecher Plaz

[https://www.lux-airport.lu/passengers-visitors/from-the-airport/bus-schedule-](https://www.lux-airport.lu/passengers-visitors/from-the-airport/bus-schedule-luxembourg-airport/#01)

[luxembourg-airport/#01](https://www.lux-airport.lu/passengers-visitors/from-the-airport/bus-schedule-luxembourg-airport/#01)

<https://www.mobiliteit.lu/>







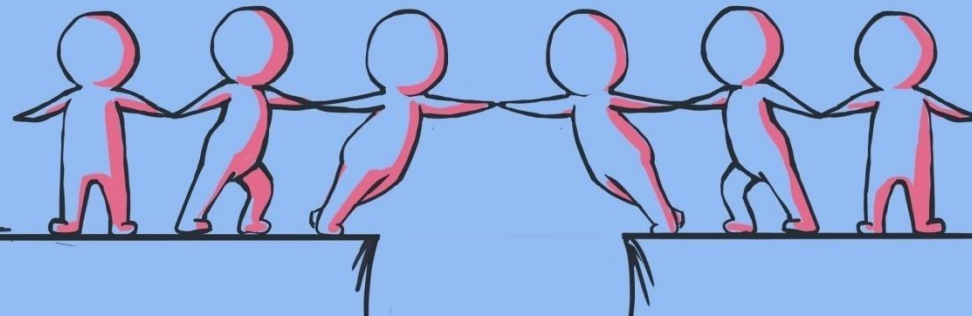
FOOD AND SPECIAL NEEDS

The participants will be provided with three meals - breakfast, lunch, dinner as well as with coffee breaks. For any special needs (other than those that were mentioned in your application forms) please contact the host organization by e-mail: foreignstudents.luxembourg@gmail.com

PARTICIPATION FEE: 50 EURO (will be deducted
from your actual travel cost)

TRAVEL COSTS AND REIMBURSEMENTS

The reimbursement of the travel expenses (travel from your departure city to the venue of the project) will be made by bank transfer for all participants.



TRAVEL BUDGET

Country - Number of Participants - Max. reimbursement per participant

Poland - 3 participants (reimbursement limit 275 eur)

Georgia - 2 participants (reimbursement limit 530 eur)

Ukraine - 3 participants (reimbursement limit 275 eur)

Portugal - 2 participants (reimbursement limit 275 eur)

Russian Federation - 3 participants (reimbursement limit 360 eur)

Armenia - 2 participants (reimbursement limit 360 eur)

Greece - 2 participants (reimbursement limit 275 eur)

Lithuania - 2 participants (reimbursement limit 275 eur)

Hungary - 2 participants (reimbursement limit 275 eur)

Mandatory documents to give to get reimbursed:

1. Booking email from air company (only when booked online);
2. E-ticket or/and receipt/invoice from flights;
3. A copy of your printed electronic ticket and all other original tickets (bus/train) used during your travel to Armenia;
4. Boarding passes (of arrival and return flight). Be very careful not to lose the boarding pass.

We need the boarding pass as an evidence for your flight. If you lose it, you CANNOT be reimbursed of your flight ticket! We will kindly ask you to send requested documents to us as soon as possible as without them we will not be able to provide you travel reimbursement, especially for what concerns flight reimbursement.



We need the boarding pass as an evidence for your flight. If you lose it, you **CANNOT** be reimbursed of your flight ticket! We will kindly ask you to send requested documents to us as soon as possible as without them we will not be able to provide you travel reimbursement, especially for what concerns flight reimbursement.

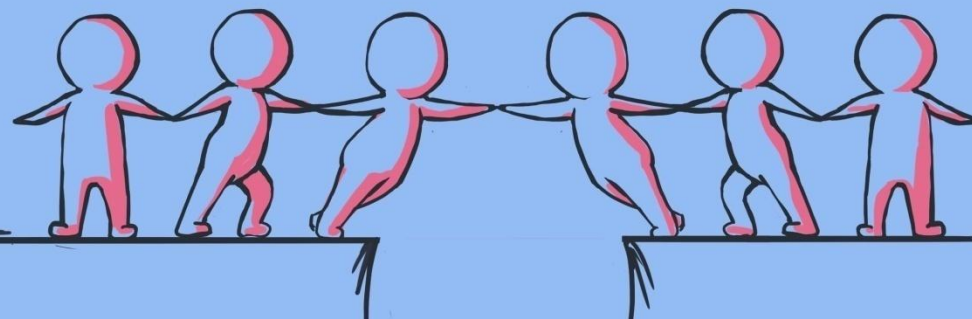
All tickets, receipt, invoices and boarding passes please send us to this address:

11Helen Buchholts, Esch-sur-Alzette, Luxembourg
For Tatevik Margaryan

IMPORTANT: before you send the originals by post send by email all documents scanned to:
foreignstudents.luxembourg@gmail.com and wiyuarm@gmail.com

Please note, if you bought your ticket in your local currency which might be different than EURO, we will calculate your travel costs through the official web page of Erasmus + program according to the exchange rates of the month when the tickets were bought.

NOTE: The tickets which are within the limit indicated in the budget will be reimbursed fully (reminder: participation fee will be deducted from the travel cost). Any amount that is more than the mentioned budget limit per country should be covered by the participants themselves.



OTHER COSTS

Food, accommodation and programme costs will be provided and fully paid thanks to financial support from Erasmus+ Programme granted by Luxembourgish National Agency - Anefore.

WHAT TO BRING WITH YOU

Besides having information about the cases based on hate speech in your country, keep in mind to have:

1. Medicines: For preventive reasons we recommend for those who have health problems to bring their own medicines;
2. Any dictionaries you might need for a smoother communication in English;
3. An alarm clock, charger and loading cables of your e-devices;
4. If you have and consider important to carry with you - a mobile, camera, tablet, laptop ect.
5. Personal cosmetics such as shampoos, gel, toothpaste, swimming suit, etc. (but you don't need to bring towels);
6. Your artistic skills! Any hidden talent that you will share with us, which you definitely will need during creativity workshops.
7. Passport - Please, check the validity of the passports before the departure - it needs to be valid at least for six months after your visit to Luxembourg. For non EU citizens you must send us the passport details in order to prepare invitation letters. For the EU citizens travelling from inside the EU a valid ID will be sufficient for travelling.



INTERCULTURAL EVENING

One of the evenings will be dedicated to the Intercultural Evening. You will present your own cultures - national, regional, personal or any kind of culture you feel you belong. This presentations/activity should not be just a "lecture" so try to find most creative way to show your culture. It means that all options are possible. A culture may be presented by a song, a story, a poem, a dance, some local special drinks or food (you will not have opportunity to cook), etc.

You can bring pictures, music or anything which you consider to be most appropriate to present your culture. Bring CDs of traditional / typical and party music or other things typical from your country that you want to share with us during the Evening of Cultures and during other evenings.

Dear participants, we have to mention that homemade alcohol is forbidden for the evenings of cultures and generally for the project. With the homemade alcohol it is not possible to monitor the quality and we would not like to risk your health.



PARTICIPATION IN THE TRAINING COURSE

You are expected to participate fully in all activities, unless you are ill. Unauthorized absence from activities and workshops is not permitted. If less than 80% of the programme is attended, it will not be possible to be reimbursed for the international travel costs.

In case you need more info please contact: foreignstudents.luxembourg@gmail.com
+352 691 548 071, Tatev

