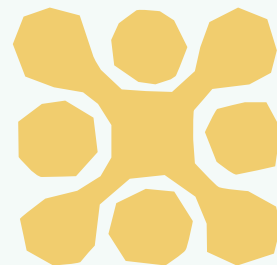
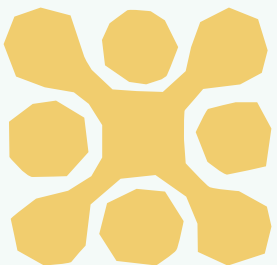


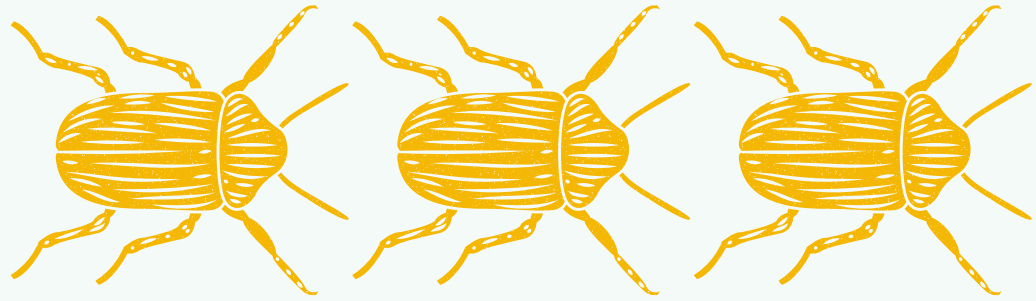
WINDMILL TREE IN NEMOLAND



MIĘDZYLESIE (IZERY MOUNTAINS), POLAND

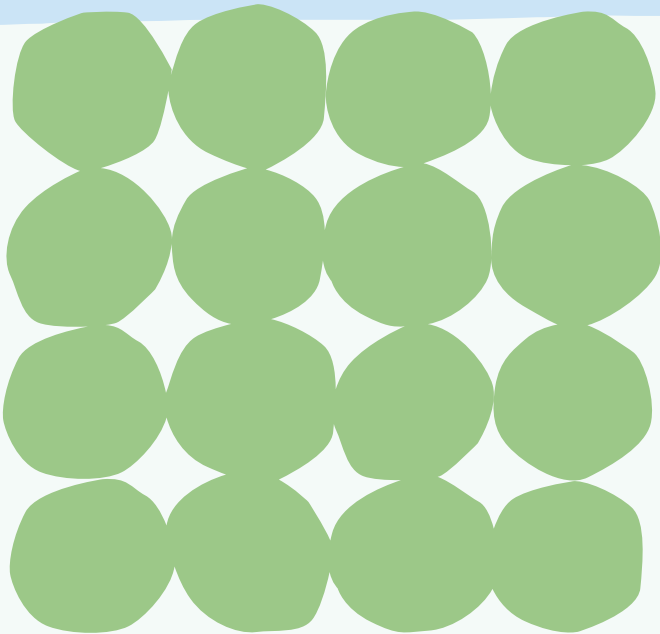
18-25 OF AUGUST 2026
18 & 25 ARE TRAVEL DAYS





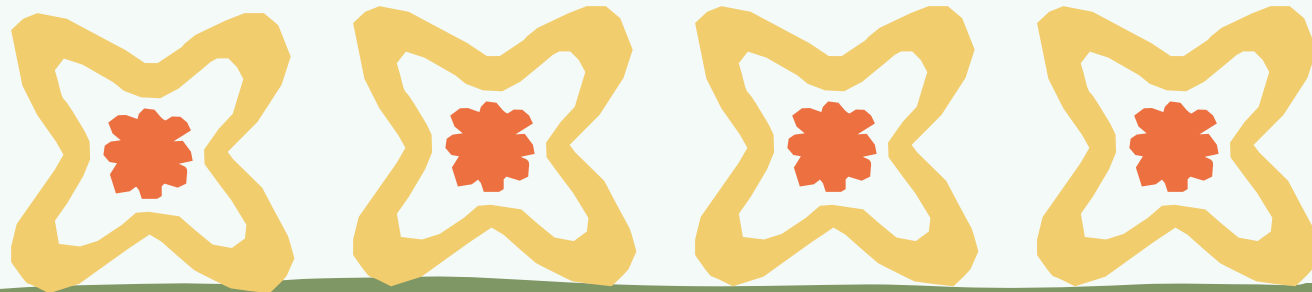
ABOUT THE PROJECT

Outdoor learning experience - nature, simple living, creative tasks and community as tools for emotional recovery, resilience, and teamwork



It is a project about slowing down, reconnecting and discovering how the forest, the fields, the body, the group and imagination can become part of meaningful educational practice.

ABOUT THE PLACE



Nemoland, meaning “no man’s land”, is a 36-hectare remote nature reserve around Ramberg and the Kamienica River – a place of absolute silence, darkness and wild nature. It is hidden between Isermountains (Góry Izerskie), Giant Mountains (Karkonosze) and the Bóbr Valley Landscape Park (Park Doliny Bobru).

In 1997 the Dutch nature association Nemo founded Nemoland as a non-profit cooperative and autonomous zone to live with what nature and the Polish villages of Stara Kamienica are offering.



PARTICIPANT PROFILE



Have experience working with young people or strong motivation to start



Speak English at a communicative level



18+



Participants should either have some previous outdoor experience or a strong motivation and willingness to develop it during the project



ACCOMODATION

Participants will sleep in two-person tents with a person of the same sex, provided by the organizers



**We only provide a tent and a sleeping mat
- you must bring your own sleeping bag!!!**

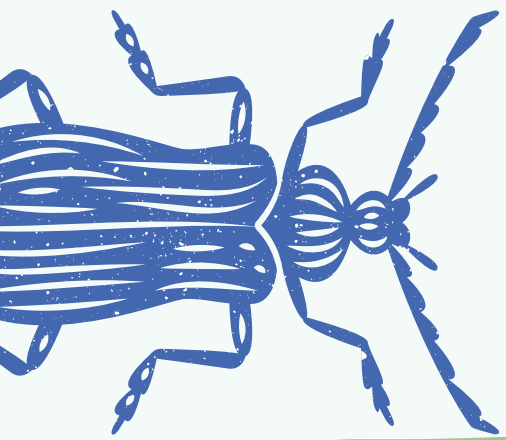
On the project camp grounds there will be farm animals, such as goats, chickens, dogs and cats so please be prepared for the characteristic smells and sounds typical of a farm



THE FOOD WILL BE VEGETARIAN!

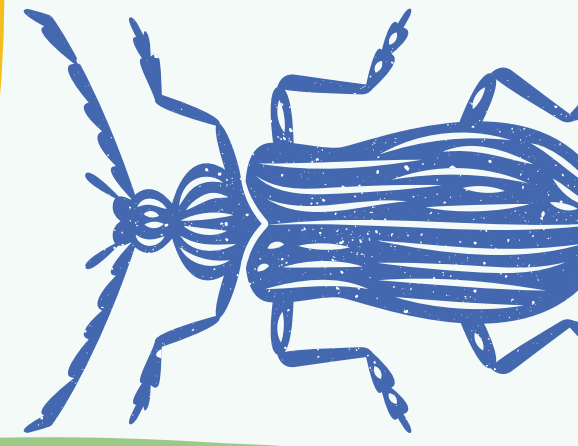
Food will be provided by our cooks, but the programme will also include a shared cooking experience in mixed groups, participants will also cook one meal themselves as part of the outdoor experience





RULES

PLEASE READ CAREFULLY!



As part of this project, there is a complete ban on alcohol consumption and the use of cell phones. Cell phones will be collected and kept in one place during activities

Participants are expected to follow these guidelines at all times during their stay.

There will be no washing machine on site. Accommodations will be very basic and camp-style— so please sign up only if you agree to these conditions



**BEFORE APPLYING, PLEASE DOUBLE-CHECK
YOUR AVAILABILITY**

FOR THE FULL PROJECT DATES.

**PARTICIPATION IN THE ENTIRE DURATION
OF THE TRAINING IS MANDATORY**

**– LATE ARRIVALS OR EARLY DEPARTURES
WILL NOT BE POSSIBLE.**

THANK YOU FOR UNDERSTANDING!

IF YOU ARE INTRESTED

APPLY HERE

