



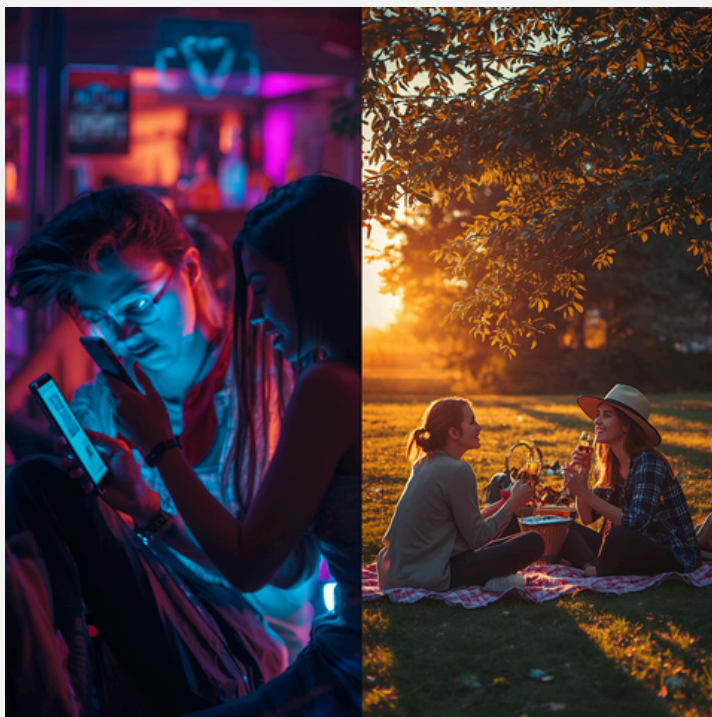
**Digital
Dementia: What
Does Physical
Friendship
Mean? Physical
Gifts vs. Virtual
Gifts**



**Infopack Erasmus+ training course
17 - 25 August 2026
Bicăcel, Romania**

Experiment Teatru Clandestin

Coordinating country: Romania
Participating countries: and other
Programme countries&associated.
Participants' ages: 18+ years old, youth
workers



Activity dates: 18-24 August 2026
17 & 25 August 2026 travel days

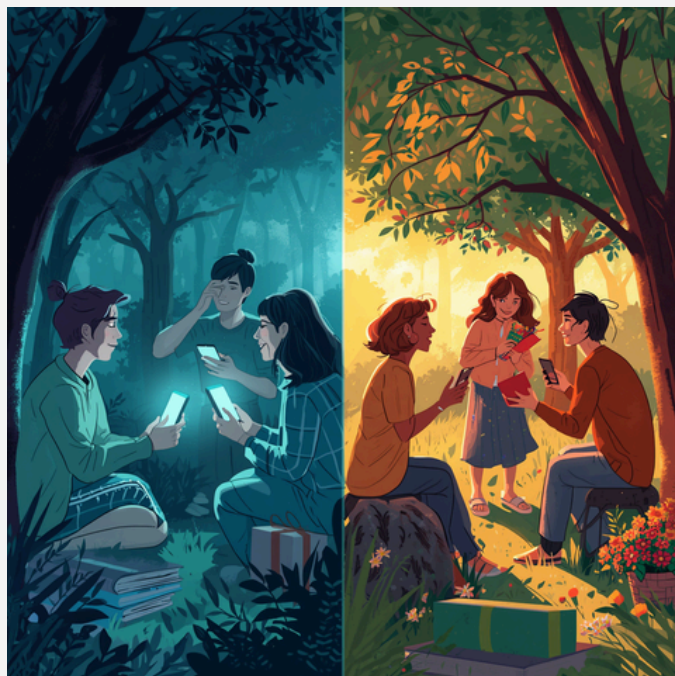
The Erasmus+ mobility project “Digital Dementia: What Does Physical Friendship Mean? Physical Gifts vs. Virtual Gifts” is a training course designed for youth workers, educators, facilitators, artists, and NGO representatives interested in the impact of digitalization on human relationships, emotional wellbeing, and social interaction among young people.

The project explores how excessive dependence on technology, social media, and virtual communication can influence memory, attention, empathy, emotional intelligence, and the quality of interpersonal relationships. Participants reflect on the differences between physical and virtual forms of connection, including face-to-face friendship versus online interaction, handwritten letters and emails, as well as physical gifts compared to digital expressions of appreciation.

Through non-formal education methods such as theatre exercises, storytelling, role-play, creative workshops, reflection circles, outdoor activities, and intercultural dialogue, participants analyze how digital culture changes the way people communicate, build trust, express emotions, and create meaningful human bonds. The mobility also encourages participants to rediscover authenticity, presence, active listening, and community connection in a natural environment in rural area and forest.

Activities will include:

- Interactive workshops on democracy, participation, and digital impact
- Simulations and role-plays related to elections, decision-making, and civic dialogue
- Group discussions on healthy digital habits
- Digital and virtual learning sessions using online platforms and collaborative tools
- Exchange of good practices between youth workers from different countries
- Practical labs for designing youth activities focused on democratic participation, conscious use of technology.



WHAT TO TAKE?

- personal medication (if needed - including antiallergic medicine if you need - THERE ARE ANIMALS ON THE FARM - dogs, cats, horses, chicken, ducks, and more!)
- cash (RON) - if you want to buy something extra on the way, a towel, slippers or other shoes to use indoors, warm, rainproof clothes (the weather can be rainy), also we will walk in the forest
- waterproof shoes if raining, (you may even consider wellingtons!) - please remember that we will be on a farm, the soil can be quite muddy), toiletries (remember to bring your toothbrush, shampoo, soap, towels etc.)
- ear plugs, if you need (we are sharing rooms with 2-3 others)
- traditional, preferably healthy sweets/snacks from your country to share with the others during breaks, this is optional
- also the accomodation is a camping in wooden houses, central heating and electric blankets on beds, but can be cold, please bring warm clothes
- we are next to the forrest, there can be insects or powerfull smells of flowerrs or plants.

And most important: your motivation and presence to all the activities :)



Visit Oradea Art Nouveau city

You will have one day free time to visit Oradea and to complete a treasure hunt in groups.

Why Oradea is a gem worth discovering

Oradea, the administrative and cultural heart of Bihor County, stands out with its captivating Baroque and Art Nouveau architecture, earning it a proud place on the Art Nouveau European Route.

Among its architectural highlights:

Baroque Palace of Oradea (now the Museum of Țării Crișurilor) features 365 windows and a rich collection spanning archaeology, natural history, and ethnography.

The majestic Roman Catholic Baroque Cathedral and the intriguing Moon Church, complete with an astronomical clock showing lunar phases, are must-see landmarks.

Oradea Fortress and elegant avenues like Republicii Street, lined with colorful Art Nouveau facades, paint a rich historical tableau.

Oradea's cultural heartbeat is further showcased in spaces like the Black Eagle Palace, State Theatre, and the Stern Palace, offering both architectural elegance and cultural activities.

For downtime or fun, the Nymphaea Aquapark provides a modern contrast with pools, slides, saunas, and wellness amenities. **Băile Felix** is also a thermal resort with spa, more Aquaparks, pools, restaurants and hotels.



Oradea



Băile Felix



The accomodation is simple and basic. We have 2 option for food menu: Standard food (international, different kind of meat, vegetables, eggs, milk, fruits, etc) or Vegetarian, you need to tell us before arriving what is your option.

You will also need:

INSURANCE DOCUMENTS (the insurance -
HEALTH, ACCIDENT AND LIABILITY
insurance for the travel
+ whole duration of the project is
OBLIGATORY
and is a personal contribution of every
participant).



Where?

Bicăcel village no 112, Lăzăreni Comune, Transylvania, Romania (on a farm) ETC manage an activity center in rural area, on a hill, near a forest, which have 40 accomodation capacity in small wooden houses for 7 people (2,3 pax/room) with bathroom in each house, an activity building with all necessary equipment, a terrace and a kitchen.

<https://experimentteatruclandestin.com/tabere/>

Accomodation, travel and food costs are covered by Erasmus+ Programme.

The travel money will be reimbursed up to 90 days after departure and each group have 2 dissemination activities and also fill the participant report.



Accommodation Bicăcel village, Lăzăreni Comune (25 km from Oradea)



Outdoor

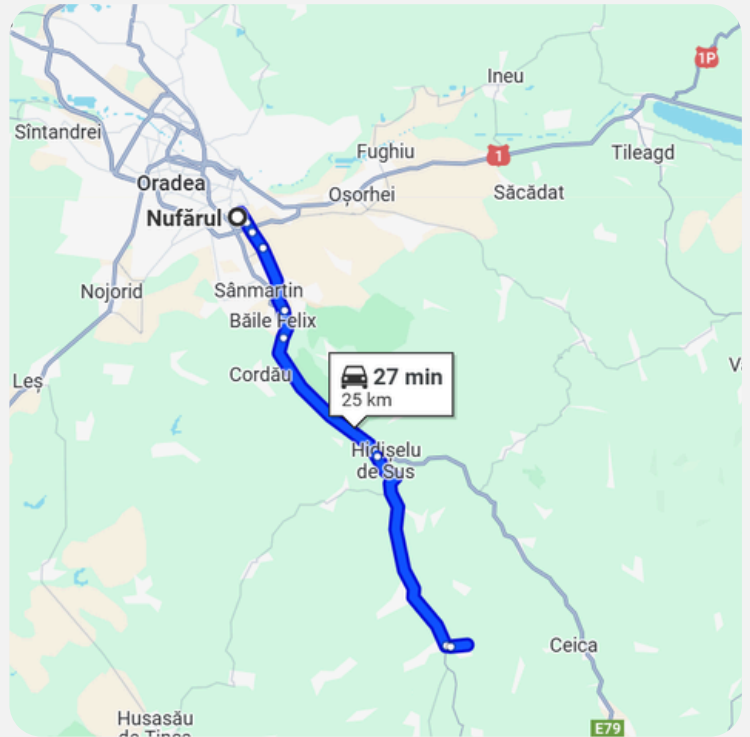


Socializing



How to arrive to Bicăcel?

To Oradea: **by plane** (OMR airport) or **train**. Budapest-Hungary is very close- 3 hours by train or Blablacar.



From Oradea to
Bicăcel:

- **by bus from Autogara Nufărul**
- 13 RON is the ticket
 - <https://transport.cjbihor.ro/>
 - **by Bolt or taxi - 100 RON (around 20 euros)/car, if you share the ride with other participants you can pay less**

Contact

Phone: 0040 740 308 321 - Cristina

Email: crea.arta@gmail.com

Facebook: Experiment Teatru Clandestin

Website: <https://experimentteatruclandestin.com/>