

Beyond

CRAFTING REALITY

10-18.09 2025 (travel days included)

Carei, Romania

TRAINING COURSE



About the project

"CRAFTING REALITY" is a KA1 Erasmus project for youth workers, youth leaders, facilitators, project managers and educators which aims to increase the knowledge about trauma and resilience, empower youth workers with personal and professional skills and equip them with art-inspired tools in their work with youth.



About the organization

Association Beyond promotes youth educational initiatives in our city and our region, Transylvania...& beyond. We deeply recognize the responsibility towards the development of the future, through education. We are in Cluj-Napoca, Romania. We promote creativity, innovation, psychological experiential education, self-knowledge processes, health and well-being, social entrepreneurship and sustainable development of civil society.



Goals of our training course

- Increasing the level of knowledge about trauma and resilience
- Increasing the level of knowledge regarding trauma-informed non-formal education
- Empowering youth workers in personal and professional competences
- Improving competences in using elements of art (clay modeling, art journaling) in their youth work
- Developing a set of 6 art-inspired tools specific to trauma-informed non-formal education
- Strengthening collaboration between the 8 partner NGOs

Partners



TÜRKİYE – Aktif Gençlik Eğitim ve Kültür Araştırmaları Derneği



ITALY – LUMIA ETS



BULGARIA – I AM YOU PEACE GLOBAL



PORTUGAL – ALPCES – ASSOCIAÇÃO LUDOPEDAGÓGICA, CULTURAL e SOCIAL



ROMANIA – ASOCIATIA BEYOND



SERBIA – Sinhro



GERMANY – Neue Zeiten Landshut e.V.



LITHUANIA – VšĮ Integruotų Sveikatos Paslaugų Centras



Feel free to join us

... if you are a youth worker, youth leader, coach, educator, social worker.

... if you are determined to organize a dissemination event after the mobility period but within the project's duration

3 motivated participants from each organization will take part in the activities.

Trainers & facilitators

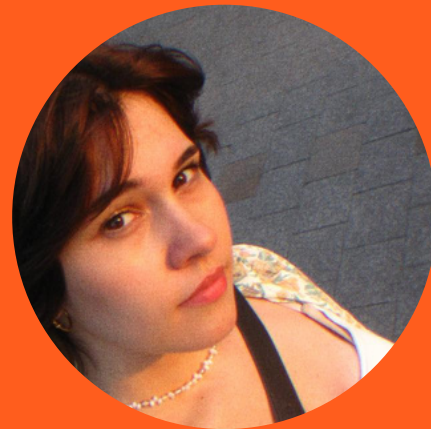


DELIA – PSYCHOLOGIST

DELIA STUDIED LAW, PSYCHOLOGY, COACHING, COGNITIVE BEHAVIOUR THERAPY, PSYCHODRAMA, SOCIODRAMA. SHE IS THE PROJECT COORDINATOR IN ASSOCIATION BEYOND. HER COMPETENCIES ARE FOLLOWING AREAS: COACHING, COGNITIVE BEHAVIOURAL THERAPY, PSYCHODRAMA, FORUM THEATRE, SOCIODRAMA, TRAINING



RAMONA – CERAMIST



NICOLE – ARTIST

A charming small city awaits us

Carei is a small town in the Crişana region of Romania, near the Hungarian border at the northwest.

It is a multicultural, prosperous and exciting travel destination. Both Central European and Eastern European culture is present here, with some Balkan influence.

https://www.Youtube.Com/watch?V=cs_qhqkphwk



Karolyi Castle, Carei

All the participants will be accommodated in the Youth Hostel Equus, which is situated next to Karoly Castle in the central park in Carei.



You will be staying in rooms with 2,3 or 4 beds. The bathrooms are shared and we will collaborate to keep the common spaces (activities rooms, socializing spaces, dining rooms) clean.

Food & Workplace

All the meals will be the responsibility of Association Beyond. Breakfast will be served between 8h00 to 9h00 in the youth hostel. Lunch and dinner will be served in youth hostel or at local restaurants, depending on the schedule of the day.

The activities in the training course will be organized both indoor – in the activities room of the hostel and outdoor – in the park or in the castle

What to bring?

We recommend to have with you:

A. Personal stuff

- towels for shower (if you want to use your own)
- flipflops (the bathroom is shared)
- personal hygiene products – fresh and comfortable clothes and shoes
- your European health insurance card or health insurance

B. Orgazational materials: leaflets, brochures of projects, publications, info material about your organisation – all that can be useful for "Building" here a creative presentation of your organization.

C. For intercultural moments

- typical food/drink from your country: ready food – snacks, cheese, drinks, biscuits;
- * night-games from your country, to make people connect to each other (maximum 4 minutes);
- * brief & creative country presentation (theatre, posters, stereotypes..) (maximum 3 minute)

NO POWERPOINT PRESENTATION – WE WANT TO CONNECT & ENJOY :)

Travel grant

(per participant)

TÜRKIYE – 309€

ITALY – 309€

PORTUGAL – 395€

BULGARIA – 309€

ROMANIA – 285€

SERBIA – 285€

GERMANY – 309€

LITHUANIA – 309€

Logistics & Travel

We recommend you to arrive and depart from **Cluj-Napoca** or **Budapest**.

!!! As the hosting organization is arranging transportation from Budapest or Cluj to Carei – please keep in mind that **80€ will be deducted** from the travel budget.

Please note: this project is financed by the Erasmus+ (Youth). Being selected for this project implies that participants will actively be involved during the entire duration of the training course and all costs (accommodation, travel, visa) will be covered by the Romanian National Agency, through Association Beyond.

IMPORTANT

Health insurance:

Each participant must have valid health insurance for the entire duration of the training (this is mandatory).

Travel Documents for reimbursement:

It is very important to keep all boarding passes and tickets (plane, bus, and/or train), as well as all receipts and invoices—no exceptions. These documents are required for reimbursement.

Reimbursement process:

Association Beyond will transfer the travel costs to your sending partner organization within 30 days after the mobility. Travel costs will be reimbursed according to the budget detailed above.



After returning home:

Once participants return home, they must send scanned copies of all used boarding passes and other tickets via email. Additionally, these original documents must be sent by post. An envelope with our address will be provided to make this process easier—simply place all the documents inside and mail it.

Once we receive all required documents, we will calculate the final amounts and transfer the funds to your sending organization.

Important note:

If any of the required documents (boarding passes, tickets, receipts/invoices) are missing or lost, we are not authorized by the Romanian National Agency to reimburse the travel costs.

MORE ABOUT CAREI – [HTTPS://WWW.YOUTUBE.COM/WATCH?V=CS_QHqKPHWK](https://www.youtube.com/watch?v=CS_QHqKPHWK)

CURRENCY: RON

EMERGENCY CONTACT – POLICE, AMBULANCE AND FIRE
DEPARTMENT EMERGENCIES – CALL 112

PE CURAND, SEE YOU SOON IN CAREI!



**Co-funded by
the European Union**