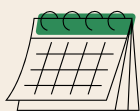




Green Board games

Gamifying Sustainability in Youth Work

Infopack



28 April - 4 May 2025



Romania



ABOUT THE PROJECT

Green Board Games

Gamifying Sustainability in Youth Work



Are you seeking new, creative ways to bring sustainability into your youth work? Do you want to make learning about environmental challenges more engaging and fun for young people? In this training course, you'll learn **how to design and use board games** to inspire young people to think critically about environmental challenges and sustainable solutions.

The program includes hands-on workshops, brainstorming sessions and best practice sharing, offering a collaborative and creative learning experience. **During the mobility, each participant will contribute to the development of educational boardgame prototypes that can be used in youth activities.**





Objectives:



Develop youth workers' skills in using educational boardgames to promote sustainability.



Raising awareness on environmental challenges and young people's responsibility towards the environment.



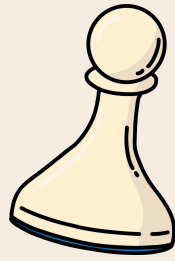
Create interactive educational resources, such as thematic boardgames, to support environmental education.



Encourage exchange of good practice and collaboration between youth workers from different countries.



ABOUT US



At **Scout Society**, we believe that learning should be an exciting journey—one filled with challenges, stories, and rewards. For over a decade, we have been blending education with gamification, creating **board games, escape rooms, treasure hunts, and interactive puzzles** to make learning engaging, fun, and meaningful.

Now, you're about to be part of something special—a project where we develop new board games together, bringing fresh ideas and creativity into the world of gamified learning. Let's turn concepts into reality and shape innovative learning experiences!

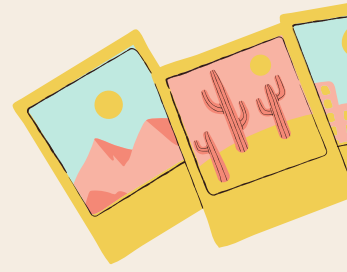
Who We Are

We are a team of passionate **educators, game designers, and youth workers** who have spent years exploring how **playful learning** can **inspire and empower people**. Our mission is to take education beyond textbooks and lectures, making it something you **experience, feel, and enjoy**.

Through gamification, we tackle **real-world issues** in engaging ways—whether it's **climate change, digitalization, cultural heritage, or human rights**, we believe **games can spark change!**



Location - Novaci



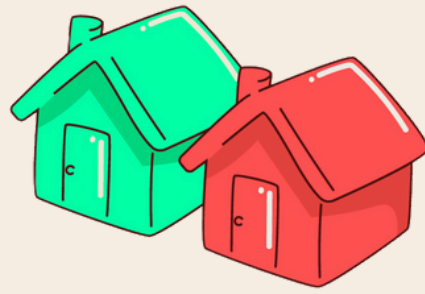
Novaci, a hidden gem in the heart of Gorj County, Romania, is where nature, history, and tradition come together in perfect harmony. Sitting at the foot of the Parâng Massif in the Carpathian Mountains, this small yet charming town offers breathtaking landscapes and a deep-rooted cultural heritage that transports visitors to a world untouched by time.

The town is a gateway to the **Transalpina**, Romania's highest road, offering stunning mountain views and drawing hikers, cyclists, and winter sports enthusiasts. Novaci is also deeply rooted in its pastoral heritage, where shepherds still practice transhumance, a UNESCO-recognized tradition.

Visitors can enjoy **fresh mountain air, traditional Romanian cuisine, and vibrant folklore festivals**. As part of Romania's cultural tourism routes, Novaci preserves its heritage while welcoming travelers seeking adventure, history, and tranquility.



Accommodation



Participants will be accommodated in a guesthouse, sharing bedrooms equipped with a private bathroom and TV.

The guest house has an outdoor space and pool (the water will be cold as we are in the mountain)

Each room has a **double bed**.

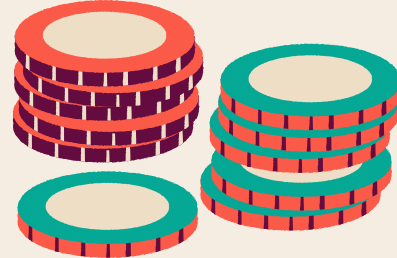
Wi-Fi is available throughout the building.

Participants must bring their own towels, hairdryer, and personal hygiene items (shampoo, shower gel, toothpaste, etc.).

Bring your own slippers and water bottle so we can reduce waste and maintain cleanliness.



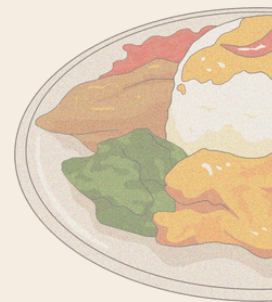
House rules



- ! Smoking is strictly prohibited inside the building.
- ! Alcohol consumption is not allowed in the building, except during the Cultural Night.
- ! Guests must respect the guesthouse facilities, rooms, and common areas. Any damage caused must be covered by the responsible participant.
- ! Eating in the rooms is not allowed; participants are encouraged to use the dining room or common areas.
- ! Moving furniture without permission is not allowed.

Food

We will have breakfast, lunch, dinner, and coffee breaks.
We will have international cuisine, mostly Romanian.
For some days we will serve food without any meat.














Currency in Romania

The currency is Romanian LEU. 1 Euro = 4.98 LEI. You can find an exchange office at the airport and in the city. In all shops (especially bigger ones) you can easily pay with credit card.



Participant profile



-  At least 18 years old;
-  Youth worker/ youth leader/ involved in community activities/ have previous work in educational institutions or social initiatives;
-  Resident in the partner countries or have a resident permit;
-  Available for the whole duration of the mobility;
-  Have a medium level of English;
-  Interested in board game development and to acquire knowledge;
-  Willing to reflect on your ideas, as well as open to learn from others' perspectives and experiences;
-  Willing to share knowledge and experiences gained during the training course;
-  To act as a multiplier, disseminating the outcomes and lessons learned to a wider audience;
-  Open to new, flexible, proactive and willing to work in a multinational and intercultural team;
-  Open to diversity and interculturality;

Project conditions

As a participant in the project, you are expected to actively engage and contribute to the overall success of the activities.

Your behavior, attitude, and level of participation are essential in creating a positive and inclusive environment for everyone involved, and you commit to upholding these standards throughout the project.

Before the project:

You must follow deadlines

Each organisation needs to prepare very well all the participants

Attend the online preparation meeting with all the partners.

During the project:

You must attend at least 95% of the program to get the reimbursement.

You must respect the program schedule.

You should be actively involved in all activities.

After the project:

You have to fill in the final report in the mobility tool.

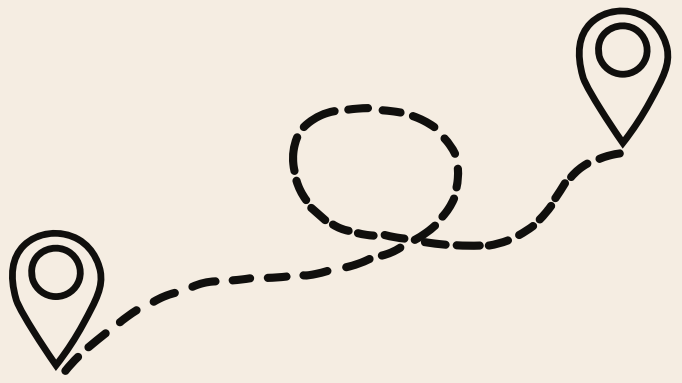
You have to disseminate the project online or offline.



Transport

Arrival day: 28.04.2025

Departure day: 04.05.2025



Participants must get approval from the hosting entity before purchasing tickets, or else they will not be reimbursed.

Recommended airport: Bucharest (Henri Coanda Airport)

Other airports: Craiova, Cluj, Timisoara

Transfer from Bucharest to Targu-Jiu:

-by shuttle straight from the airport to Targu-Jiu; you can buy tickets in advance online from one of the bus companies: [Normandia Transfer](#) or [Bibilantravel](#)

-by train from North Train Station (Gara de Nord); [here](#) is the timetable and you can buy the tickets online

-by bus from Militari Bus Station; [here](#) you can find the timetable; (we recommend Normandia)

Participants can extend their stay by 1-2 days considered as travel days, before or after the mobility at their own expense.

***Keep in mind the journey from Bucharest to Targu-Jiu takes around 5-6 hours**



Distance band



The travel is calculated using the [distance calculator](#) with the distance between **the city of the sending organisation and the venue of the activity**.

Travel Distance	Green travel	Non-Green travel
10-99 km	56 EUR	28 EUR
100-499 km	285 EUR	211 EUR
500-1999 km	417 EUR	309 EUR
2000-3999km	535 EUR	395 EUR
3000-3999 km	785 EUR	580 EUR
4000 - 7999 km	1188 EUR	1188 EUR
8000 km or more	1735 EUR	1735 EUR

Green travel includes: bicycle, bus, car-pooling and train



Reimbursement



The project is financed by Erasmus+ programme meaning that the travel costs, food and accommodation will be covered by the hosting organisation.

To receive reimbursement you need to provide us all the original documents of transportation (plane, train or bus) that are used during your trip from the departure city to the project location. These include: tickets, receipts, boarding passes, invoices. **We can't reimburse travel costs without these original documents.**

Reimbursement will be done in EURO regardless of the mentioned currency in tickets, receipts and invoices. All tickets purchased in another currency other than Euro will be converted and calculated through the official webpage of the European Commission.

Reimbursement will be done through bank transfer after the project only to the sending organization bank account.



What to bring

- Personal medication
- comfortable shoes and clothes
- Personal hygiene products (shampoo, shower gel, toothpaste, etc.)
- Towels
- Adequate clothes (check the weather online before you travel)
- Slippers (mandatory for inside)
- Water bottle
- Traditional costumes, non-perishable food, games

Cultural night

During the project, we plan to arrange an Intercultural evening. You will present your own cultures – national, regional, personal or any kind of culture you feel you belong to.

A culture may be presented by a song, a story, a poem, a dance, some drink or food, etc. You may bring pictures, music or anything you consider to be most appropriate to present your culture. However, we appreciate if you find more creative way to present your culture.

We will not have a kitchen to prepare the meals for the intercultural evening, so we suggest that you adapt your food and drinks to that reality.

CULTURE



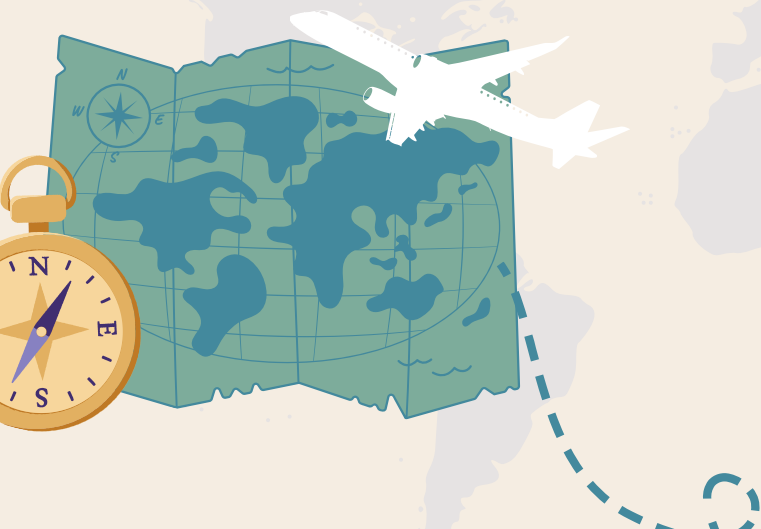
travel and health insurance

It is recommended for all participants to provide their own health insurance.

This should cover you for the full duration of your time in Romania. You can use the free European Health Insurance (EHIC) to allow you access to public hospital treatment. Having this card means you may be able to receive free medical treatment in the event of an emergency, but it is NOT guaranteed.

Also, please be aware that the EHIC is NOT a travel insurance policy , it will not cover private health care, non- emergency health costs, or being flown back to your home country. To learn more , please go to : ehic.europa.eu/

Travel insurance to cover the safety of you possessions, lost luggage, delays to flight is not mandatory requirement, but it is advisable.





**SEE YOU
SOON!**

