



Agência Nacional
Erasmus+ Juventude/Desporto
Corpo Europeu de Solidariedade



PBA on Social Innovation 4 Erasmus+ projects

Águeda | Portugal from 14th to 18th April 2025



Co-funded by the
Erasmus+ Programme
of the European Union



EUROPEAN
SOLIDARITY
CORPS





Goal and Objectives

This PBA on Social Innovation for Erasmus+ projects, aims at creating a informal network of organizations active at a European level, that will work to improve the involvement of participants with fewer opportunities in Erasmus+ Projects through Social innovation

Specific objectives:

In particular, the informal network will commit to:

- Create common standards for a Social Innovation Mindset in Erasmus+ projects, working on a Position Paper that will be sent to EACEA and other relevant stakeholders;
- Create mutual partnerships on E+ Social Innovation projects thought to be accessible to participants with fewer opportunities;
- Improve the preparation of youth workers and youth leaders, so that they will be able to transfer social innovation mindset into Youth Work and erasmus+ Projects

Target groups

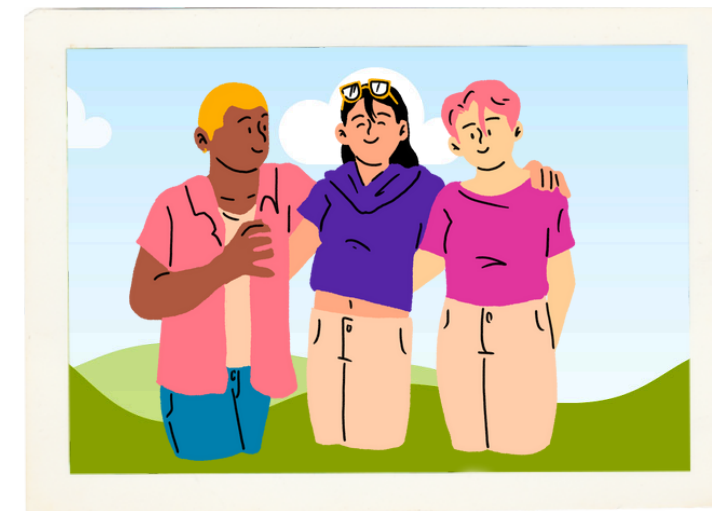
Youth workers and Youth Organization that are or want to be Social Innovation users



Youth Workers



Youth leaders



Decision
Makers



Trainers

Type of activities

Partnership Building Activity

The activity consists in a combination of interactive sessions, presentations, and group network sessions.

Participants will have the opportunity to engage with expert trainers and peers, and to share their own experiences and insights focused on design future cooperations on erasmus+ through Social innovation



A Position Paper on Social Innovation 4 Youth



Relevant partnerships in the field of Social Innovation 4 Youth

Actions covered/ programme



CORPO
EUROPEU
DE SOLIDARIEDADE



Erasmus+

Venue Hotel

Inatel Luso
Coimbra
Portugal

Inatel Luso - Hotéis INATEL

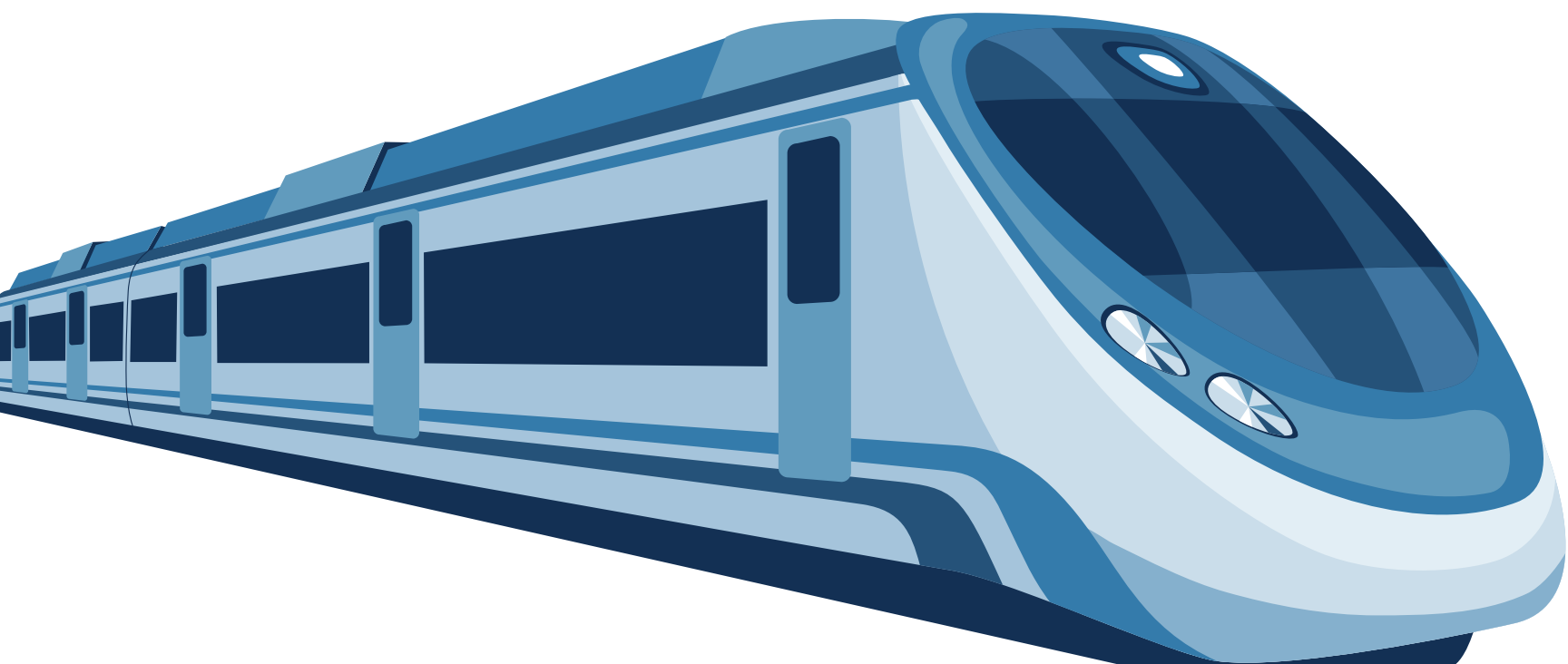
Nos Hotéis INATEL pensamos em todos os nossos clientes e em tudo o que podemos fazer para conseguir que as suas férias sejam uma experiência única

 inatel.pt



Transportation

To get to Mealhada there isn't a lot of public transportation so we ask you to **get to Porto at a suitable time to get the train to mealhada at 14h10 pm that arrives at 16:10 pm.** From the train station at mealhada we will schedule a bus to the accommodation.



Costs

Participation fee

No participation fee is expected.

Accommodation and food

Organisation costs will be covered by the Erasmus+ programme.

Travel reimbursement

Travel costs will be reimbursed in the framework of Erasmus+ distance bands, taking into account also the green travel option.

- 100–499km: 211€ (traditional travel), 285€ (green travel);
- 500–1999km: 309€ (traditional travel), 417€ (green travel);
- 2000+ km: 395€ (traditional travel), 535€ (green travel)

Agenda

14th April

15th April

16th April

17th April

18th April

Arrival to Luso
| Portugal
10th March
Welcome &
Registration
17.30

Welcome Dinner
20.00

Departure
14th March
After Breakfast
and Farwell session

Arrival

18.00h
Get to know &
Team-building

19.30h
Setting the Goals
Social Innovation
& Youth

09.00h
Social Innovation on
youth work

11.00h
SI Youth fair
Preparation
lunch

14.30h
Social Innovation 4
Youth Fair

16.00h
SIY Assesement
and YPWFP

18.00h
Individual reflection

09.00h
Social Innovation
Trends on Youth
Work

11.00h
SIY Best Practices

lunch

12.30h
Lunch OUT

15.00h
Local Youth
Authorities welcome
Reception

Local Good SIY
Practices

18.00h
New Partners Active

08.00h
Buçaco Walking
Discovery
SIY Future Project
Proposals

11.00h
SMART Lab
Build SIY
Capacity

lunch

14.30h
SIY Consortiums

16.30h
Evaluation
& Youthpass

18.00h
PBA's Agreements

09.00h
Bye Bye Breakfast
Final PBA | Network
Session

departure

Morning Coffee Brake
10.30h
Lunch
13.00h
Afternoon Coffee Brake
16.00h
Dinner
20.00h



Agência Nacional
Erasmus+ Juventude/Desporto
Corpo Europeu de Solidariedade

See you in Luso